

## ARG10186 anti-alpha Fetoprotein antibody [AFP-Y1]

Package: 100 µg, 50 µg  
Store at: -20°C

### Summary

Product Description	Mouse Monoclonal antibody [AFP-Y1] recognizes Human AFP
Tested Reactivity	Hu
Tested Application	ELISA, WB
Specificity	No detectable cross-reaction with human normal serum proteins.
Host	Mouse
Clonality	Monoclonal
Clone	AFP-Y1
Isotype	IgG2b
Target Name	alpha Fetoprotein
Species	Human
Immunogen	Human AFP, which was isolated from amniotic fluid and purified by affinity chromatography.
Conjugation	Un-conjugated
Alternate Names	Alpha-fetoprotein; HPAFP; FETA; Alpha-fetoglobulin; AFPD; Alpha-1-fetoprotein

### Application Instructions

Application Note	<p>ELISA: This antibody can be used as a capture antibody in sandwich immunoassay for human AFP detection.</p> <p>Western blot: The antibody identifies 68kD AFP on western blot.</p> <p>* The dilutions indicate recommended starting dilutions and the optimal dilutions or concentrations should be determined by the scientist.</p>
------------------	---

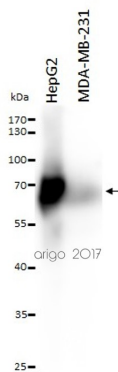
### Properties

Form	Liquid
Purification	Protein G affinity purified
Buffer	0.01M PBS (pH 7.0)
Storage instruction	For continuous use, store undiluted antibody at 2-8°C for up to a week. For long-term storage, aliquot and store at -20°C or below. Storage in frost free freezers is not recommended. Avoid repeated freeze/thaw cycles. Suggest spin the vial prior to opening. The antibody solution should be gently mixed before use.
Note	For laboratory research only, not for drug, diagnostic or other use.

### Bioinformation

Database links	<a href="#">GeneID: 174 Human</a> <a href="#">Swiss-port # P02771 Human</a>
Gene Symbol	AFP
Gene Full Name	alpha-fetoprotein
Background	Alpha fetoprotein (AFP) is a 70kD glycoprotein which is produced primarily by liver cells in foetuses. It exists in significant amount in foetal plasma and decreases rapidly after birth. Moderate amount of AFP exists in serum of pregnant women. Monitoring mother's serum AFP level in second trimester pregnancy can help assessing birth defects such as Down syndrome, neural tube defect and anencephaly. Elevated AFP level in men, children and non-pregnant women is associated with neoplastic conditions in lever, testicle or ovary.
Function	Binds copper, nickel, and fatty acids as well as, and bilirubin less well than, serum albumin. Only a small percentage (less than 2%) of the human AFP shows estrogen-binding properties. [UniProt]
Highlight	Related Antibody Duos and Panels: <a href="#">ARG30065 Alpha Fetoprotein ELISA Antibody Duo</a> Related products: <a href="#">alpha Fetoprotein antibodies;</a> <a href="#">alpha Fetoprotein ELISA Kits;</a> <a href="#">alpha Fetoprotein Duos / Panels;</a> <a href="#">Anti-Mouse IgG secondary antibodies;</a> Related news: <a href="#">Stem cell and the regenerative medicine: Ready for the patients</a>
Research Area	Cancer antibody; Cell Biology and Cellular Response antibody; Developmental Biology antibody
Calculated Mw	69 kDa
PTM	Independent studies suggest heterogeneity of the N-terminal sequence of the mature protein and of the cleavage site of the signal sequence. Sulfated.

## Images



ARG10186 anti-alpha Fetoprotein antibody [AFP-Y1] WB image

Western blot: 20 µl of HepG2 and MDA-MB-231 cell lysates stained with ARG10186 anti-alpha Fetoprotein antibody [AFP-Y1] at 1:500 dilution.