

ARG10557 anti-CD34 antibody [Q19-E]

Package: 100 µl
Store at: -20°C

Summary

Product Description	Rabbit Monoclonal antibody [Q19-E] recognizes CD34
Tested Reactivity	Hu
Tested Application	IHC-P
Host	Rabbit
Clonality	Monoclonal
Clone	Q19-E
Isotype	IgG
Target Name	CD34
Species	Human
Immunogen	Synthetic peptide around the N-terminus of Human CD34
Conjugation	Un-conjugated
Alternate Names	Hematopoietic progenitor cell antigen CD34; CD antigen CD34

Application Instructions

Application table	Application	Dilution
	IHC-P	1:100 - 1:200
Application Note	* The dilutions indicate recommended starting dilutions and the optimal dilutions or concentrations should be determined by the scientist.	

Properties

Form	Liquid
Buffer	20 mM Tris-HCl (pH 8.0), 0.05% Sodium azide and 20 mg/ml BSA
Preservative	0.05% Sodium azide
Stabilizer	20 mg/ml BSA
Storage instruction	For continuous use, store undiluted antibody at 2-8°C for up to a week. For long-term storage, aliquot and store at -20°C or below. Storage in frost free freezers is not recommended. Avoid repeated freeze/thaw cycles. Suggest spin the vial prior to opening. The antibody solution should be gently mixed before use.
Note	For laboratory research only, not for drug, diagnostic or other use.

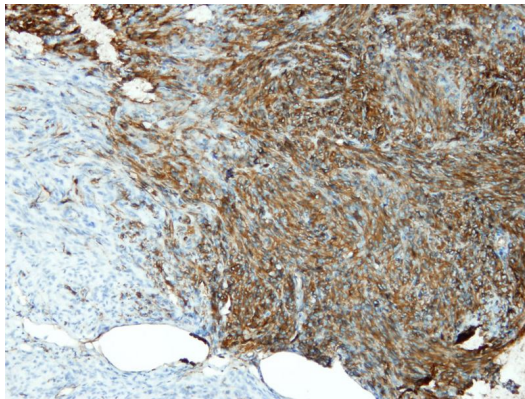
Bioinformation

Database links	GeneID: 947 Human
----------------	-----------------------------------

[Swiss-port # P28906 Human](#)

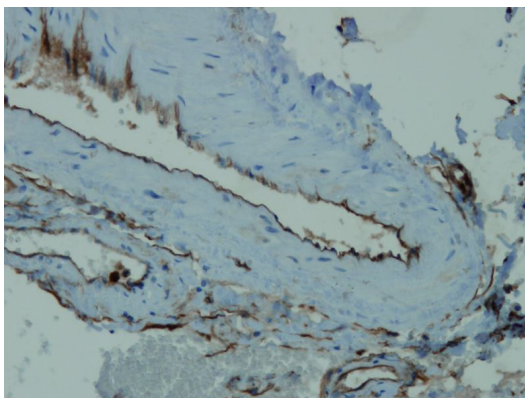
Gene Symbol	CD34
Gene Full Name	CD34 molecule
Background	CD34 protein may play a role in the attachment of stem cells to the bone marrow extracellular matrix or to stromal cells. This single-pass membrane protein is highly glycosylated and phosphorylated by protein kinase C. Two transcript variants encoding different isoforms have been found for this gene. [provided by RefSeq, Aug 2011]
Function	CD34 is a possible adhesion molecule with a role in early hematopoiesis by mediating the attachment of stem cells to the bone marrow extracellular matrix or directly to stromal cells. Could act as a scaffold for the attachment of lineage specific glycans, allowing stem cells to bind to lectins expressed by stromal cells or other marrow components. Presents carbohydrate ligands to selectins. [UniProt]
Research Area	Cancer antibody; Cell Biology and Cellular Response antibody; Controls and Markers antibody; Developmental Biology antibody; Immune System antibody; Neuroscience antibody; Pro-B Cell Marker antibody; Endothelial Cell Marker antibody; Angiogenesis Study antibody
Calculated Mw	41 kDa
PTM	Highly glycosylated. Phosphorylated on serine residues by PKC.

Images



ARG10557 anti-CD34 antibody [Q19-E] IHC-P image

Immunohistochemistry: Formalin fixed, paraffin embedded Human GIST (gastrointestinal stromal tumor) of small intestine (4 μ m sections) stained with ARG10557 anti-CD34 antibody [Q19-E].



ARG10557 anti-CD34 antibody [Q19-E] IHC-P image

Immunohistochemistry: Formalin fixed, paraffin embedded Human endothelium of the muscular artery (4 μ m sections) stained with ARG10557 anti-CD34 antibody [Q19-E].