

ARG10731 anti-Nestin antibody

Package: 50 µl
Store at: -20°C

Summary

| | |
|-----------------------------|---|
| Product Description | Rabbit Polyclonal antibody recognizes Nestin |
| Tested Reactivity | Hu |
| Species Does Not React With | Ms, Rat |
| Tested Application | ICC/IF, WB |
| Host | Rabbit |
| Clonality | Polyclonal |
| Isotype | IgG |
| Target Name | Nestin |
| Species | Human |
| Immunogen | Synthetic peptide around aa. 315-630 of Human Nestin. |
| Conjugation | Un-conjugated |
| Alternate Names | NES; Nestin FLJ21841; Nbla00170 |

Application Instructions

| | | |
|-------------------|--|-----------------|
| Application table | Application | Dilution |
| | ICC/IF | 1:5000 |
| | WB | 1:1000 - 1:5000 |
| Application Note | * The dilutions indicate recommended starting dilutions and the optimal dilutions or concentrations should be determined by the scientist. | |

Properties

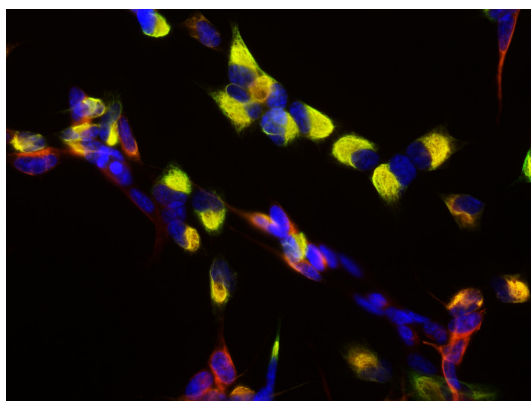
| | |
|---------------------|--|
| Form | Liquid |
| Purification | Unpurified. |
| Buffer | Serum. |
| Storage instruction | For continuous use, store undiluted antibody at 2-8°C for up to a week. For long-term storage, aliquot and store at -20°C or below. Storage in frost free freezers is not recommended. Avoid repeated freeze/thaw cycles. Suggest spin the vial prior to opening. The antibody solution should be gently mixed before use. |
| Note | For laboratory research only, not for drug, diagnostic or other use. |

Bioinformation

| | |
|----------------|-------------------------------------|
| Database links | GeneID: 10763 Human |
|----------------|-------------------------------------|

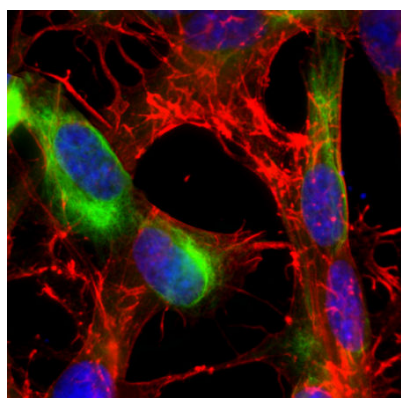
| | |
|----------------|---|
| Gene Symbol | NES |
| Gene Full Name | nestin |
| Background | This gene encodes a member of the intermediate filament protein family and is expressed primarily in nerve cells. |
| Function | Required for brain and eye development. Promotes the disassembly of phosphorylated vimentin intermediate filaments (IF) during mitosis and may play a role in the trafficking and distribution of IF proteins and other cellular factors to daughter cells during progenitor cell division. Required for survival, renewal and mitogen-stimulated proliferation of neural progenitor cells. |
| Research Area | Cancer antibody; Cell Biology and Cellular Response antibody; Controls and Markers antibody; Developmental Biology antibody; Neuroscience antibody; NSC antibody; Neural Stem Cell Marker antibody; NSC and Neuron Marker antibody; Neuron Development Study antibody |
| Calculated Mw | 177 kDa |
| PTM | Constitutively phosphorylated. This increases during mitosis when the cytoplasmic intermediate filament network is reorganized (By similarity). |

Images



ARG10731 anti-Nestin antibody ICC/IF image

Immunocytochemistry: SH-SY5Y neuroblastoma cells were stained with ARG10731 anti-Nestin antibody at 1:5000 (red) and co-stained with an antibody against vimentin at 1:10000 (green). Vimentin is main partner of nestin forming heterodimers and further polymerizing to form intermediate filaments. Co-localization of vimentin and nestin in cells was shown in yellow. Blue is DAPI staining of DNA.



ARG10731 anti-Nestin antibody ICC/IF image

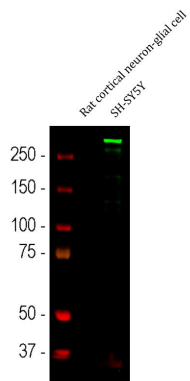
Immunofluorescence: SH-SY5Y cells stained with ARG10731 anti-Nestin antibody (green) at 1:3000 dilution and costained with Mouse mAb to actin (red) at 1:500 dilution. Hoechst (blue) for nuclear staining.

The Nestin antibody produces strong staining in the cytoplasm in clearly filamentous fashion, while actin antibody stains the submembranous actin-rich cytoskeleton, stress fibers and bundles of actin associated with cell adhesion sites.

kDa
250
150
100
75
50
37
25
20
15
10

ARG10731 anti-Nestin antibody WB image

Western blot: SH-SY5Y homogenate stained with ARG10731 anti-Nestin antibody at 1:2000 dilution.



ARG10731 anti-Nestin antibody WB image

Western blot: Rat cortical neuron-glia cell and SH-SY5Y cell lysates stained with ARG10731 anti-Nestin antibody (green) at 1:3000 dilution.

The blot detected only in Human cells.