

## ARG20340 anti-CXCL10 / IP10 antibody

Package: 50 µg  
Store at: -20°C

### Summary

Product Description	Rabbit Polyclonal antibody recognizes CXCL10 / IP10
Tested Reactivity	Rat
Tested Application	WB
Host	Rabbit
Clonality	Polyclonal
Isotype	IgG
Target Name	CXCL10 / IP10
Species	Rat
Immunogen	E. coli-expressed recombinant rat IP-10
Conjugation	Un-conjugated
Alternate Names	gIP-10; INP10; 10 kDa interferon gamma-induced protein; IP-10; C-X-C motif chemokine 10; 1-73; Small-inducible cytokine B10; IFI10; Gamma-IP10; SCYB10; crg-2; C7; mob-1

### Application Instructions

Application table	Application	Dilution
	WB	0.5-2 µg/ml
Application Note	* The dilutions indicate recommended starting dilutions and the optimal dilutions or concentrations should be determined by the scientist.	

### Properties

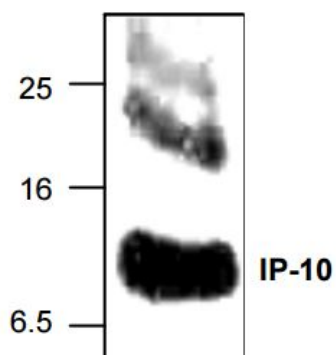
Form	Liquid
Purification	Affinity Purified Antibody
Buffer	PBS (pH 7.2), 50% Glycerol, 1% BSA and 0.02% Thimerosal
Preservative	0.02% Thimerosal
Stabilizer	50% Glycerol, 1% BSA
Concentration	0.5 mg/ml
Storage instruction	For continuous use, store undiluted antibody at 2-8°C for up to a week. For long-term storage, aliquot and store at -20°C. Storage in frost free freezers is not recommended. Avoid repeated freeze/thaw cycles. Suggest spin the vial prior to opening. The antibody solution should be gently mixed before use.
Note	For laboratory research only, not for drug, diagnostic or other use.

### Bioinformation

Database links	<a href="#">GeneID: 245920 Rat</a> <a href="#">Swiss-port # P48973 Rat</a>
Background	IP-10 (interferon-gamma induced protein 10 kDa; in mouse also called cytokine responsive gene 2, Crg-2, or mob-1) is a highly inducible, primary response gene that belongs to the CXC chemokine superfamily. It was first cloned in 1985. Like Mig, IP-10 has no activity on neutrophils. Its functions include stimulation of monocytes, natural killer and T-cell migration, regulation of T-cell and bone marrow progenitor maturation, modulation of adhesion molecule expression as well as inhibition of angiogenesis. Mig and IP-10 share the same receptor, CXCR3.
Highlight	Related products: <a href="#">CXCL10 antibodies</a> ; <a href="#">CXCL10 ELISA Kits</a> ; <a href="#">CXCL10 recombinant proteins</a> ; <a href="#">Anti-Rabbit IgG secondary antibodies</a> ; Related news: <a href="#">circNDUFB2, a circular RNA (circRNA), activates anti-tumor immunity</a>
Research Area	Cancer antibody; Immune System antibody
Calculated Mw	11 kDa
PTM	CXCL10(1-73) is produced by proteolytic cleavage after secretion from keratinocytes.

## Images

---



ARG20340 anti-IP-10 antibody WB image

Western Blot: EAE rat brain stained with anti-IP-10 antibody (ARG20340).