

ARG20605 Mouse IgG2a Isotype Control antibody [HOPC-1] (HRP)

Package: 500 µl
Store at: 4°C

Summary

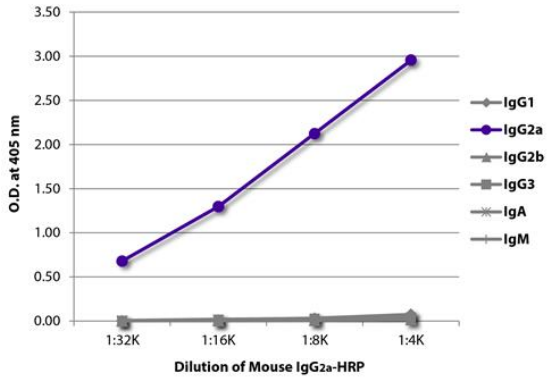
Product Description	HRP-conjugated Mouse Monoclonal antibody [HOPC-1] as a negative control antibody for Mouse IgG2a
Tested Application	ELISA, FACS, FLISA, ICC/IF, IHC-Fr, WB
Host	Mouse
Clonality	Monoclonal
Clone	HOPC-1
Isotype	IgG2a, lambda
Target Name	Mouse IgG2a
Conjugation	HRP

Application Instructions

Application table	Application	Dilution
	ELISA	1:2000 - 1:4000
	FACS	Assay-dependent
	FLISA	Assay-dependent
	ICC/IF	Assay-dependent
	IHC-Fr	Assay-dependent
	WB	Assay-dependent
Application Note	* The dilutions indicate recommended starting dilutions and the optimal dilutions or concentrations should be determined by the scientist.	

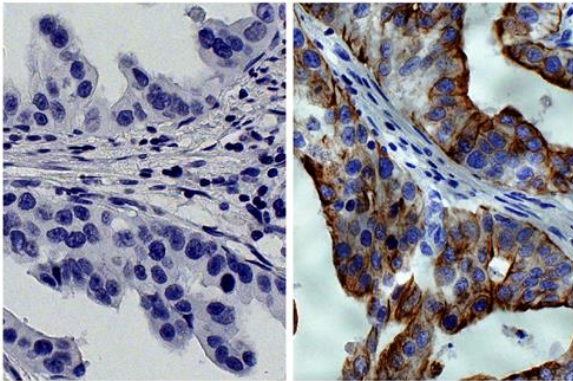
Properties

Form	Liquid
Buffer	50% PBS (pH 7.4) and 50% Glycerol
Stabilizer	50% Glycerol
Storage instruction	Aliquot and store in the dark at 2-8°C. Keep protected from prolonged exposure to light. Avoid repeated freeze/thaw cycles. Suggest spin the vial prior to opening. The antibody solution should be gently mixed before use.
Note	For laboratory research only, not for drug, diagnostic or other use.



ARG20605 Mouse IgG2a Isotype Control antibody [HOPC-1] (HRP)
ELISA image

ELISA: The plate was coated with [ARG21883](#) Goat anti-Mouse IgG1 antibody (pre-adsorbed), [ARG23801](#) Goat anti-Mouse IgG2a antibody (pre-adsorbed), [ARG21891](#) Goat anti-Mouse IgG2b antibody (pre-adsorbed), Goat anti-Mouse IgG3 antibody, [ARG21539](#) Goat anti-Mouse IgA antibody (pre-adsorbed), and [ARG21517](#) Goat anti-Mouse IgM antibody (pre-adsorbed). Serially diluted ARG20605 Mouse IgG2a Isotype Control antibody [HOPC-1] (HRP) was captured and quantified.



ARG20605 Mouse IgG2a Isotype Control antibody [HOPC-1] (HRP)
control image

Control: Paraffin-embedded Human gastric cancer tissue stained with ARG20605 Mouse IgG2a Isotype Control antibody [HOPC-1] (HRP) (left) and anti-Cytokeratin 8 antibody (HRP) (right) followed by DAB and hematoxylin.