

ARG20689 Rat IgG1 Isotype Control antibody [KLH/G1-2-2]

Package: 100 µg
Store at: -20°C

Summary

Product Description	Rat Monoclonal antibody [KLH/G1-2-2] as a negative control antibody for Rat IgG1
Tested Application	BL, ELISA, FACS, FLISA, ICC/IF
Specificity	KLH
Host	Rat
Clonality	Monoclonal
Clone	KLH/G1-2-2
Isotype	IgG1, kappa
Target Name	Rat IgG1
Conjugation	Un-conjugated

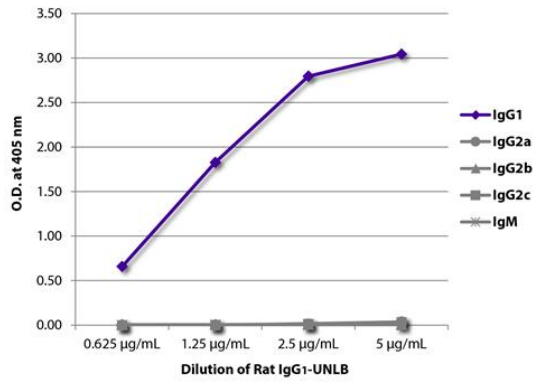
Application Instructions

Application table	Application	Dilution
	BL	Assay-dependent
	ELISA	< 1 µg/ml
	FACS	Assay-dependent
	FLISA	Assay-dependent
	ICC/IF	Assay-dependent

Application Note * The dilutions indicate recommended starting dilutions and the optimal dilutions or concentrations should be determined by the scientist.

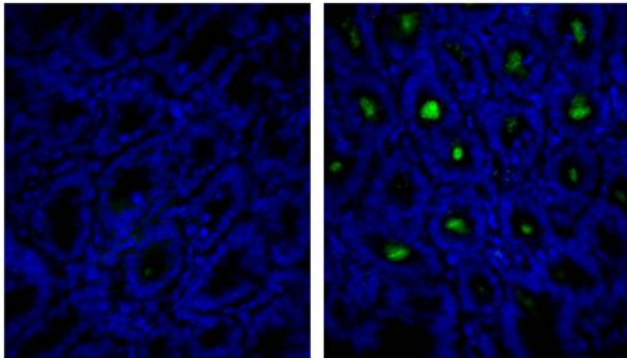
Properties

Form	Liquid
Purification	Purified
Buffer	BBS (pH 8.2)
Concentration	0.5 mg/ml
Storage instruction	For continuous use, store undiluted antibody at 2-8°C for up to a week. For long-term storage, aliquot and store at -20°C or below. Storage in frost free freezers is not recommended. Avoid repeated freeze/thaw cycles. Suggest spin the vial prior to opening. The antibody solution should be gently mixed before use.
Note	For laboratory research only, not for drug, diagnostic or other use.



ARG20689 Rat IgG1 Isotype Control antibody [KLH/G1-2-2] ELISA image

ELISA: The plate was coated with serially diluted ARG20689 Rat IgG1 Isotype Control antibody [KLH/G1-2-2]. Immunoglobulin was detected with Mouse anti-Rat IgG1 antibody (Biotin), [ARG21703](#) Mouse anti-Rat IgG2a antibody [2A8F4] (Biotin), [ARG21710](#) Mouse anti-Rat IgG2b antibody [2B10A8] (Biotin-maleimide), [ARG21715](#) Mouse anti-Rat IgG2c antibody [2C8F1] (Biotin), and [ARG23837](#) Mouse anti-Rat IgM antibody [M2A1] (Biotin) followed by [ARG23912](#) Streptavidin (HRP) and quantified.



ARG20689 Rat IgG1 Isotype Control antibody [KLH/G1-2-2] control image

Control: Frozen section of Mouse intestine tissue stained with ARG20689 Rat IgG1 Isotype Control antibody [KLH/G1-2-2] (left) and [ARG21616](#) Rat anti-Mouse IgA antibody [11-44-2] (right) followed by [ARG21695](#) Mouse anti-Rat IgG1 antibody [G17E7] (FITC) and DAPI.