

**ARG20806**  
**anti-CD49d / LPAM1 / Integrin alpha 4 antibody [PS/2]**Package: 100 µg  
Store at: -20°C

### Summary

Product Description	Rat Monoclonal antibody [PS/2] recognizes CD49d / LPAM1 / Integrin alpha 4
Tested Reactivity	Hu, Ms
Tested Application	BL, FACS, IHC-Fr, IP
Specificity	Mouse/Human CD49d.
Host	Rat
Clonality	Monoclonal
Clone	PS/2
Isotype	IgG2b, kappa
Target Name	CD49d / LPAM1 / Integrin alpha 4
Species	Mouse
Immunogen	P815 cells
Conjugation	Un-conjugated
Alternate Names	CD49 antigen-like family member D; VLA-4 subunit alpha; CD49D; Integrin alpha-IV; CD antigen CD49d; Integrin alpha-4; IA4

### Application Instructions

Application table	Application	Dilution
	BL	Assay-dependent
	FACS	Assay-dependent
	IHC-Fr	Assay-dependent
	IP	Assay-dependent
Application Note	* The dilutions indicate recommended starting dilutions and the optimal dilutions or concentrations should be determined by the scientist.	

### Properties

Form	Liquid
Buffer	BBS (pH 8.2)
Concentration	0.5 mg/ml
Storage instruction	For continuous use, store undiluted antibody at 2-8°C for up to a week. For long-term storage, aliquot and store at -20°C. Storage in frost free freezers is not recommended. Avoid repeated freeze/thaw cycles. Suggest spin the vial prior to opening. The antibody solution should be gently mixed before use.
Note	For laboratory research only, not for drug, diagnostic or other use.

## Bioinformation

### Database links

[GeneID: 16401 Mouse](#)

[GeneID: 3676 Human](#)

[Swiss-port # P13612 Human](#)

[Swiss-port # Q00651 Mouse](#)

### Gene Symbol

ITGA4

### Gene Full Name

integrin alpha 4

### Background

The product of this gene belongs to the integrin alpha chain family of proteins. Integrins are heterodimeric integral membrane proteins composed of an alpha chain and a beta chain. This gene encodes an alpha 4 chain. Unlike other integrin alpha chains, alpha 4 neither contains an I-domain, nor undergoes disulfide-linked cleavage. Alpha 4 chain associates with either beta 1 chain or beta 7 chain. [provided by RefSeq, Jul 2008]

### Function

Integrins alpha-4/beta-1 (VLA-4) and alpha-4/beta-7 are receptors for fibronectin. They recognize one or more domains within the alternatively spliced CS-1 and CS-5 regions of fibronectin. They are also receptors for VCAM1. Integrin alpha-4/beta-1 recognizes the sequence Q-I-D-S in VCAM1. Integrin alpha-4/beta-7 is also a receptor for MADCAM1. It recognizes the sequence L-D-T in MADCAM1. On activated endothelial cells integrin VLA-4 triggers homotypic aggregation for most VLA-4-positive leukocyte cell lines. It may also participate in cytolytic T-cell interactions with target cells. [UniProt]

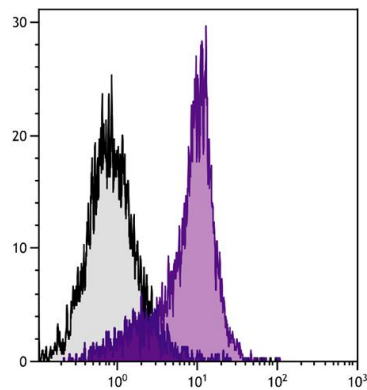
### Calculated Mw

115 kDa

### PTM

Phosphorylation on Ser-1027 inhibits PXN binding.

## Images



ARG20806 anti-CD49d / LPAM1 / Integrin alpha 4 antibody [PS/2]  
FACS image

Flow Cytometry: BALB/c Mouse splenocytes stained with ARG20806 anti-CD49d / LPAM1 / Integrin alpha 4 antibody [PS/2] followed by Mouse anti-Rat IgG2b antibody (Alexa Fluor® 647).