

ARG20809
anti-CD49d / LPAM1 / Integrin alpha 4 antibody [PS/2] (PE)Package: 50 µg
Store at: 4°C

Summary

Product Description	PE-conjugated Rat Monoclonal antibody [PS/2] recognizes CD49d / LPAM1 / Integrin alpha 4
Tested Reactivity	Hu, Ms
Tested Application	BL, FACS, IHC-Fr
Specificity	Mouse/Human CD49d.
Host	Rat
Clonality	Monoclonal
Clone	PS/2
Isotype	IgG2b, kappa
Target Name	CD49d / LPAM1 / Integrin alpha 4
Species	Mouse
Immunogen	P815 cells
Conjugation	PE
Alternate Names	CD49 antigen-like family member D; VLA-4 subunit alpha; CD49D; Integrin alpha-IV; CD antigen CD49d; Integrin alpha-4; IA4

Application Instructions

Application table	Application	Dilution
	BL	Assay-dependent
	FACS	< 0.2 µg/10 ⁶ cells
	IHC-Fr	Assay-dependent
Application Note	* The dilutions indicate recommended starting dilutions and the optimal dilutions or concentrations should be determined by the scientist.	

Properties

Form	Liquid
Buffer	PBS, 0.1% Sodium azide and Sucrose.
Preservative	0.1% Sodium azide
Stabilizer	Sucrose
Concentration	0.1 mg/ml
Storage instruction	Aliquot and store in the dark at 2-8°C. Keep protected from prolonged exposure to light. Avoid repeated freeze/thaw cycles. Suggest spin the vial prior to opening. The antibody solution should be gently mixed before use.

Note For laboratory research only, not for drug, diagnostic or other use.

Bioinformation

Database links [GeneID: 16401 Mouse](#)
[GeneID: 3676 Human](#)
[Swiss-port # P13612 Human](#)
[Swiss-port # Q00651 Mouse](#)

Gene Symbol ITGA4

Gene Full Name integrin alpha 4

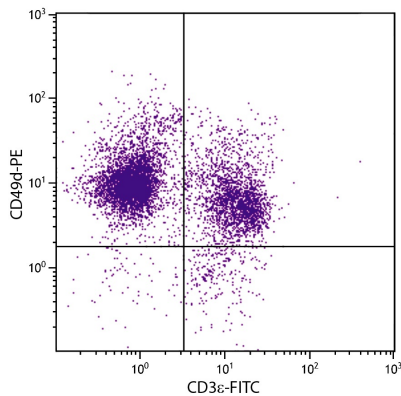
Background The product of this gene belongs to the integrin alpha chain family of proteins. Integrins are heterodimeric integral membrane proteins composed of an alpha chain and a beta chain. This gene encodes an alpha 4 chain. Unlike other integrin alpha chains, alpha 4 neither contains an I-domain, nor undergoes disulfide-linked cleavage. Alpha 4 chain associates with either beta 1 chain or beta 7 chain. [provided by RefSeq, Jul 2008]

Function Integrins alpha-4/beta-1 (VLA-4) and alpha-4/beta-7 are receptors for fibronectin. They recognize one or more domains within the alternatively spliced CS-1 and CS-5 regions of fibronectin. They are also receptors for VCAM1. Integrin alpha-4/beta-1 recognizes the sequence Q-I-D-S in VCAM1. Integrin alpha-4/beta-7 is also a receptor for MADCAM1. It recognizes the sequence L-D-T in MADCAM1. On activated endothelial cells integrin VLA-4 triggers homotypic aggregation for most VLA-4-positive leukocyte cell lines. It may also participate in cytolytic T-cell interactions with target cells. [UniProt]

Calculated Mw 115 kDa

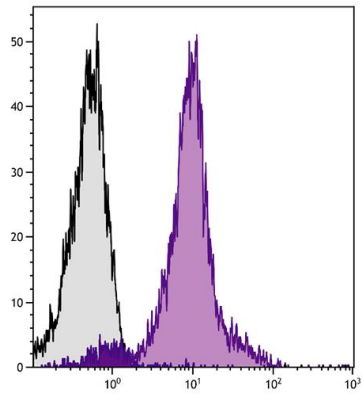
PTM Phosphorylation on Ser-1027 inhibits PXN binding.

Images



ARG20809 anti-CD49d / LPAM1 / Integrin alpha 4 antibody [PS/2] (PE) FACS image

Flow Cytometry: BALB/c Mouse splenocytes stained with ARG20809 anti-CD49d / LPAM1 / Integrin alpha 4 antibody [PS/2] (PE) and anti-CD3e antibody [C363.29B] (FITC).



ARG20809 anti-CD49d / LPAM1 / Integrin alpha 4 antibody [PS/2]
(PE) FACS image

Flow Cytometry: BALB/c Mouse splenocytes stained with ARG20809
anti-CD49d / LPAM1 / Integrin alpha 4 antibody [PS/2] (PE).