

ARG20908 anti-CD16 / 32 antibody [93]

Package: 250 µg
Store at: -20°C

Summary

Product Description	Rat Monoclonal antibody [93] recognizes CD16 / 32
Tested Reactivity	Ms
Tested Application	BL, FACS, IHC-Fr, IP
Specificity	Mouse CD16/32. The clone 93 recognizes a conformational epitope formed by FcγII and FcγIII receptors.
Host	Rat
Clonality	Monoclonal
Clone	93
Isotype	IgG2a, lambda
Target Name	CD16 / 32
Species	Mouse
Immunogen	VH81X Tg B cells and T220 stromal cell line
Conjugation	Un-conjugated
Alternate Names	FCR11A; FcR11a; CD antigen CD16a; Fc-gamma R111-alpha; FCR-10; FcR-10; FCR11; FCG3; Low affinity immunoglobulin gamma Fc region receptor III-A; FCGR11; CD16; Fc-gamma R11a; IgG Fc receptor III-2; IMD20; CD16A; IGFR3; CD16a antigen; FCGR3; FcR11; Fc-gamma R11

Application Instructions

Application table	Application	Dilution
	BL	Assay-dependent
	FACS	< 3 µg/10 ⁶ cells
	IHC-Fr	Assay-dependent
	IP	Assay-dependent
Application Note	* The dilutions indicate recommended starting dilutions and the optimal dilutions or concentrations should be determined by the scientist.	

Properties

Form	Liquid
Buffer	BBS (pH 8.2)
Concentration	0.5 mg/ml
Storage instruction	For continuous use, store undiluted antibody at 2-8°C for up to a week. For long-term storage, aliquot and store at -20°C. Storage in frost free freezers is not recommended. Avoid repeated freeze/thaw cycles. Suggest spin the vial prior to opening. The antibody solution should be gently mixed before use.

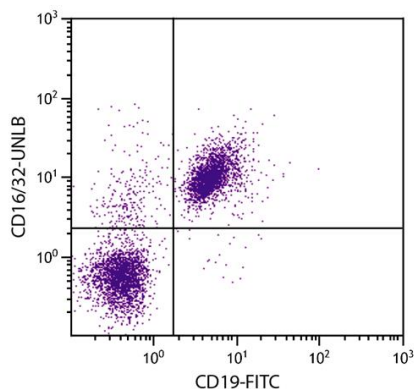
Note

For laboratory research only, not for drug, diagnostic or other use.

Bioinformation

Gene Symbol	FCGR3A
Gene Full Name	Fc fragment of IgG, low affinity IIIa, receptor (CD16a)
Background	This gene encodes a receptor for the Fc portion of immunoglobulin G, and it is involved in the removal of antigen-antibody complexes from the circulation, as well as other other antibody-dependent responses. This gene (FCGR3A) is highly similar to another nearby gene (FCGR3B) located on chromosome 1. The receptor encoded by this gene is expressed on natural killer (NK) cells as an integral membrane glycoprotein anchored through a transmembrane peptide, whereas FCGR3B is expressed on polymorphonuclear neutrophils (PMN) where the receptor is anchored through a phosphatidylinositol (PI) linkage. Mutations in this gene have been linked to susceptibility to recurrent viral infections, susceptibility to systemic lupus erythematosus, and alloimmune neonatal neutropenia. Alternatively spliced transcript variants encoding different isoforms have been found for this gene. [provided by RefSeq, Jul 2008]
Function	Receptor for the Fc region of IgG. Binds complexed or aggregated IgG and also monomeric IgG. Mediates antibody-dependent cellular cytotoxicity (ADCC) and other antibody-dependent responses, such as phagocytosis. [UniProt]
Highlight	Related products: CD16 antibodies ; CD16 ELISA Kits ; CD16 Duos / Panels ; Anti-Rat IgG secondary antibodies ; Related news: Tumor-Infiltrating Lymphocytes (TILs)
Research Area	Developmental Biology antibody; Immune System antibody; General Lymphocyte Marker Study antibody; Natural killer cells antibody
Calculated Mw	29 kDa
PTM	Glycosylated. Contains high mannose- and complex-type oligosaccharides. Glycosylation at Asn-180 is mandatory for high affinity binding to the Fc and for discrimination between fucosylated and afucosylated IgG glycoforms. The soluble form is produced by a proteolytic cleavage.

Images



ARG20908 anti-CD16/32 antibody [93] FACS image

Flow Cytometry: BALB/c Mouse splenocytes stained with [ARG20908](#) anti-CD16/32 antibody [93] and [ARG20850](#) anti-CD19 antibody [6D5] (FITC) followed by [ARG21704](#) Mouse anti-Rat IgG2a antibody [2A8F4] (PE).