

ARG20956 anti-CD80 antibody [1G10] (PE-Cyanine 5)

Package: 50 µg
Store at: 4°C

Summary

Product Description	PE-Cyanine 5-conjugated Rat Monoclonal antibody [1G10] recognizes CD80
Tested Reactivity	Ms
Tested Application	BL, FACS
Specificity	Mouse CD80. The clone 1G10 blocks binding of CTLA-4 to CD80 but it does not block stimulation of T cells by natural antigen-presenting cells.
Host	Rat
Clonality	Monoclonal
Clone	1G10
Isotype	IgG2a, kappa
Target Name	CD80
Species	Mouse
Immunogen	Activated 5C2 cells
Conjugation	PE-Cyanine 5
Alternate Names	B7.1; CTLA-4 counter-receptor B7.1; CD28LG; T-lymphocyte activation antigen CD80; B7-1; CD28LG1; B7; LAB7; Activation B7-1 antigen; CD antigen CD80; BB1

Application Instructions

Application table	Application	Dilution
	BL	Assay-dependent
	FACS	< 0.2 µg/10 ⁶ cells
Application Note	* The dilutions indicate recommended starting dilutions and the optimal dilutions or concentrations should be determined by the scientist.	

Properties

Form	Liquid
Buffer	PBS, 0.1% Sodium azide and Sucrose.
Preservative	0.1% Sodium azide
Stabilizer	Sucrose
Concentration	0.1 mg/ml
Storage instruction	Aliquot and store in the dark at 2-8°C. Keep protected from prolonged exposure to light. Avoid repeated freeze/thaw cycles. Suggest spin the vial prior to opening. The antibody solution should be gently mixed before use.

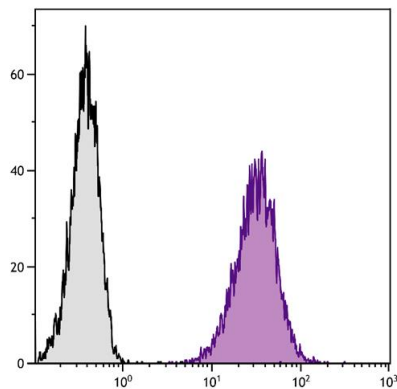
Note

For laboratory research only, not for drug, diagnostic or other use.

Bioinformation

Database links	GeneID: 12519 Mouse Swiss-port # Q00609 Mouse
Gene Symbol	CD80
Gene Full Name	CD80 antigen
Background	The protein encoded by this gene is a membrane receptor that is activated by the binding of CD28 or CTLA-4. The activated protein induces T-cell proliferation and cytokine production. This protein can act as a receptor for adenovirus subgroup B and may play a role in lupus neuropathy. [provided by RefSeq, Aug 2011]
Function	Involved in the costimulatory signal essential for T-lymphocyte activation. T-cell proliferation and cytokine production is induced by the binding of CD28, binding to CTLA-4 has opposite effects and inhibits T-cell activation. [UniProt]
Calculated Mw	33 kDa

Images



ARG20956 anti-CD80 antibody [1G10] (PE-Cyanine 5) FACS image

Flow Cytometry: DBA/2 Mouse mastocytoma cell line P815 (negative control) and mCD80-Ig transfected P815 cells stained with ARG20956 anti-CD80 antibody [1G10] (PE-Cyanine 5).