

ARG21042
anti-CD49d / LPAM1 / Integrin alpha 4 antibody [DATK32]Package: 100 µg
Store at: -20°C

Summary

Product Description	Rat Monoclonal antibody [DATK32] recognizes CD49d / LPAM1 / Integrin alpha 4
Tested Reactivity	Ms
Tested Application	BL, FACS, IHC-Fr, IP
Specificity	Mouse LPAM-1. The clone DATK32 recognizes a conformational epitope on the heterodimer.
Host	Rat
Clonality	Monoclonal
Clone	DATK32
Isotype	IgG2a, kappa
Target Name	CD49d / LPAM1 / Integrin alpha 4
Species	Mouse
Immunogen	AKR/Cum mouse T lymphoma cell line TK-1
Conjugation	Un-conjugated
Alternate Names	CD49 antigen-like family member D; VLA-4 subunit alpha; CD49D; Integrin alpha-IV; CD antigen CD49d; Integrin alpha-4; IA4

Application Instructions

Application table	Application	Dilution
	BL	Assay-dependent
	FACS	< 1 µg/10 ⁶ cells
	IHC-Fr	Assay-dependent
	IP	Assay-dependent
Application Note	* The dilutions indicate recommended starting dilutions and the optimal dilutions or concentrations should be determined by the scientist.	

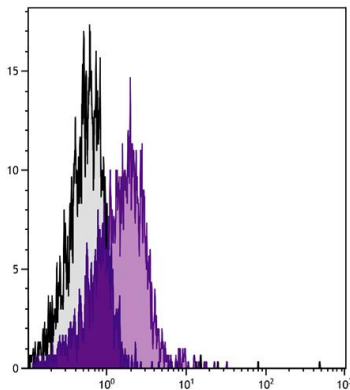
Properties

Form	Liquid
Buffer	BBS (pH 8.2)
Concentration	0.5 mg/ml
Storage instruction	For continuous use, store undiluted antibody at 2-8°C for up to a week. For long-term storage, aliquot and store at -20°C. Storage in frost free freezers is not recommended. Avoid repeated freeze/thaw cycles. Suggest spin the vial prior to opening. The antibody solution should be gently mixed before use.
Note	For laboratory research only, not for drug, diagnostic or other use.

Bioinformation

Database links	GeneID: 16401 Mouse Swiss-port # Q00651 Mouse
Gene Symbol	ITGA4
Gene Full Name	integrin alpha 4
Background	The product of this gene belongs to the integrin alpha chain family of proteins. Integrins are heterodimeric integral membrane proteins composed of an alpha chain and a beta chain. This gene encodes an alpha 4 chain. Unlike other integrin alpha chains, alpha 4 neither contains an I-domain, nor undergoes disulfide-linked cleavage. Alpha 4 chain associates with either beta 1 chain or beta 7 chain. [provided by RefSeq, Jul 2008]
Function	Integrins alpha-4/beta-1 (VLA-4) and alpha-4/beta-7 are receptors for fibronectin. They recognize one or more domains within the alternatively spliced CS-1 and CS-5 regions of fibronectin. They are also receptors for VCAM1. Integrin alpha-4/beta-1 recognizes the sequence Q-I-D-S in VCAM1. Integrin alpha-4/beta-7 is also a receptor for MADCAM1. It recognizes the sequence L-D-T in MADCAM1. On activated endothelial cells integrin VLA-4 triggers homotypic aggregation for most VLA-4-positive leukocyte cell lines. It may also participate in cytolytic T-cell interactions with target cells. [UniProt]
Calculated Mw	115 kDa
PTM	Phosphorylation on Ser-1027 inhibits PXN binding.

Images



ARG21042 anti-CD49d / LPAM1 / Integrin alpha 4 antibody [DATK32]
FACS image

Flow Cytometry: BALB/c Mouse splenocytes stained with ARG21042 anti-CD49d / LPAM1 / Integrin alpha 4 antibody [DATK32] followed by [ARG23825](#) Mouse anti-Rat IgG2a antibody [2A8F4] (Cy5).