

ARG21195 anti-CD8b antibody [EP42] (PE)

Package: 50 µg
Store at: 4°C

Summary

Product Description	PE-conjugated Mouse Monoclonal antibody [EP42] recognizes CD8b
Tested Reactivity	Chk
Tested Application	FACS, IHC-Fr
Specificity	Chicken CD8β. The clone EP42 recognizes the CD8β chain.
Host	Mouse
Clonality	Monoclonal
Clone	EP42
Isotype	IgG2a, kappa
Target Name	CD8b
Species	Chicken
Immunogen	Chicken splenocytes
Conjugation	PE
Alternate Names	LY3; CD8B1; CD antigen CD8b; LEU2; T-cell surface glycoprotein CD8 beta chain; P37; LYT3

Application Instructions

Application table	Application	Dilution
	FACS	< 0.2 µg/10 ⁶ cells
	IHC-Fr	Assay-dependent
Application Note	* The dilutions indicate recommended starting dilutions and the optimal dilutions or concentrations should be determined by the scientist.	

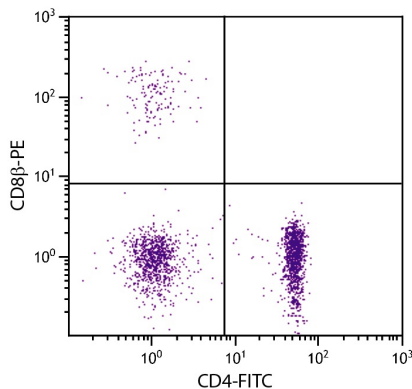
Properties

Form	Liquid
Buffer	PBS, 0.1% Sodium azide and Sucrose.
Preservative	0.1% Sodium azide
Stabilizer	Sucrose
Concentration	0.1 mg/ml
Storage instruction	Aliquot and store in the dark at 2-8°C. Keep protected from prolonged exposure to light. Avoid repeated freeze/thaw cycles. Suggest spin the vial prior to opening. The antibody solution should be gently mixed before use.
Note	For laboratory research only, not for drug, diagnostic or other use.

Bioinformation

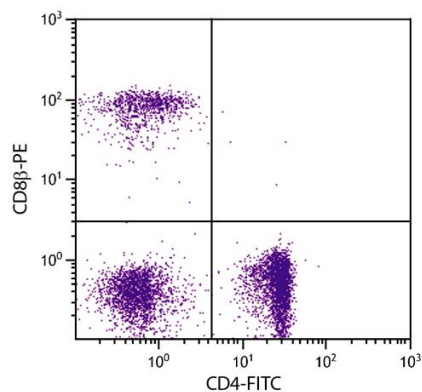
Gene Symbol	CD8B
Gene Full Name	CD8b molecule
Background	The CD8 antigen is a cell surface glycoprotein found on most cytotoxic T lymphocytes that mediates efficient cell-cell interactions within the immune system. The CD8 antigen, acting as a coreceptor, and the T-cell receptor on the T lymphocyte recognize antigens displayed by an antigen presenting cell (APC) in the context of class I MHC molecules. The functional coreceptor is either a homodimer composed of two alpha chains, or a heterodimer composed of one alpha and one beta chain. Both alpha and beta chains share significant homology to immunoglobulin variable light chains. This gene encodes the CD8 beta chain isoforms. Multiple alternatively spliced transcript variants encoding distinct membrane associated or secreted isoforms have been described. A pseudogene, also located on chromosome 2, has been identified. [provided by RefSeq, May 2010]
Function	Identifies cytotoxic/suppressor T-cells that interact with MHC class I bearing targets. CD8 is thought to play a role in the process of T-cell mediated killing. [UniProt]
Highlight	Related products: CD8 antibodies ; CD8 ELISA Kits ; CD8 Duos / Panels ; Anti-Mouse IgG secondary antibodies ; Related news: New antibody panels and duos for Tumor immune microenvironment Tumor-Infiltrating Lymphocytes (TILs)
Calculated Mw	24 kDa
PTM	Phosphorylated as a consequence of T-cell activation.

Images



ARG21195 anti-CD8b antibody [EP42] (PE) FACS image

Flow Cytometry: Chicken peripheral blood mononuclear cells stained with [ARG21195](#) anti-CD8b antibody [EP42] (PE) and [ARG21156](#) anti-CD4 antibody [CT-4] (FITC).



ARG21195 anti-CD8b antibody [EP42] (PE) FACS image

Flow Cytometry: Chicken peripheral blood lymphocytes stained with ARG21195 anti-CD8b antibody [EP42] (PE) and [ARG21156](#) anti-CD4 antibody [CT-4] (FITC).