

## ARG21286 anti-CD49b / Integrin alpha 2 antibody [HAS-4] (PE)

Package: 50 tests

Store at: 4°C

### Summary

Product Description	PE-conjugated Mouse Monoclonal antibody [HAS-4] recognizes CD49b / Integrin alpha 2
Tested Reactivity	Hu
Tested Application	BL, FACS, ICC/IF, IHC-Fr
Specificity	Human CD49b.
Host	Mouse
Clonality	Monoclonal
Clone	HAS-4
Isotype	IgG2a, kappa
Target Name	CD49b / Integrin alpha 2
Species	Human
Immunogen	Human keratinocytes
Conjugation	PE
Alternate Names	Collagen receptor; VLA-2 subunit alpha; HPA-5; CD49B; CD49 antigen-like family member B; GPIa; VLA-2; CD antigen CD49b; BR; VLAA2; Platelet membrane glycoprotein Ia; Integrin alpha-2

### Application Instructions

Application table	Application	Dilution
	BL	Assay-dependent
	FACS	10 µl/10 <sup>6</sup> cells
	ICC/IF	Assay-dependent
	IHC-Fr	Assay-dependent
Application Note	* The dilutions indicate recommended starting dilutions and the optimal dilutions or concentrations should be determined by the scientist.	

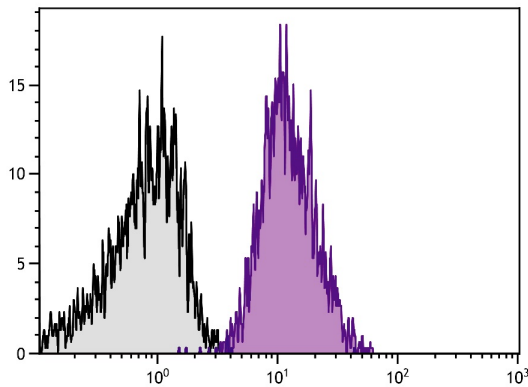
### Properties

Form	Liquid
Buffer	PBS, 0.1% Sodium azide and Sucrose.
Preservative	0.1% Sodium azide
Stabilizer	Sucrose
Storage instruction	Aliquot and store in the dark at 2-8°C. Keep protected from prolonged exposure to light. Avoid repeated freeze/thaw cycles. Suggest spin the vial prior to opening. The antibody solution should be gently mixed before use.

## Bioinformation

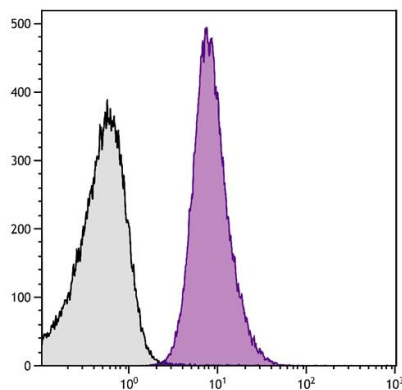
Database links	<a href="#">GeneID: 3673 Human</a> <a href="#">Swiss-port # P17301 Human</a>
Gene Symbol	ITGA2
Gene Full Name	integrin, alpha 2 (CD49B, alpha 2 subunit of VLA-2 receptor)
Background	This gene encodes the alpha subunit of a transmembrane receptor for collagens and related proteins. The encoded protein forms a heterodimer with a beta subunit and mediates the adhesion of platelets and other cell types to the extracellular matrix. Loss of the encoded protein is associated with bleeding disorder platelet-type 9. Antibodies against this protein are found in several immune disorders, including neonatal alloimmune thrombocytopenia. This gene is located adjacent to a related alpha subunit gene. Alternative splicing results in multiple transcript variants. [provided by RefSeq, Aug 2012]
Function	Integrin alpha-2/beta-1 is a receptor for laminin, collagen, collagen C-propeptides, fibronectin and E-cadherin. It recognizes the proline-hydroxylated sequence G-F-P-G-E-R in collagen. It is responsible for adhesion of platelets and other cells to collagens, modulation of collagen and collagenase gene expression, force generation and organization of newly synthesized extracellular matrix. [UniProt]
Calculated Mw	129 kDa

## Images



ARG21286 anti-CD49b / Integrin alpha 2 antibody [HAS-4] (PE) FACS image

Flow Cytometry: Human platelets stained with ARG21286 anti-CD49b / Integrin alpha 2 antibody [HAS-4] (PE).



ARG21286 anti-CD49b / Integrin alpha 2 antibody [HAS-4] (PE) FACS image

Flow Cytometry: Human peripheral blood platelets stained with ARG21286 anti-CD49b / Integrin alpha 2 antibody [HAS-4] (PE).