

ARG21575 Goat anti-Mouse IgG2b antibody (PE), pre-adsorbed

Package: 250 µg
Store at: 4°C

Summary

| | |
|---------------------|---|
| Product Description | PE-conjugated Goat Polyclonal antibody recognizes Mouse IgG2b |
| Tested Reactivity | Ms |
| Tested Application | FACS, FLISA, ICC/IF, IHC-Fr, IHC-P, WB |
| Specificity | Reacts with the heavy chain of mouse IgG2b |
| Host | Goat |
| Clonality | Polyclonal |
| Isotype | IgG |
| Target Name | IgG2b |
| Species | Mouse |
| Conjugation | PE |

Application Instructions

Pre Adsorbed Mouse IgG1, IgG2a, IgG3, IgM, and IgA; Human immunoglobulins and pooled sera.

Application table

| Application | Dilution |
|-------------|--------------------------------|
| FACS | < 0.1 ug/10 ⁶ cells |
| FLISA | < 1 ug/ml |
| ICC/IF | Assay-dependent |
| IHC-Fr | Assay-dependent |
| IHC-P | Assay-dependent |
| WB | Assay-dependent |

Application Note * The dilutions indicate recommended starting dilutions and the optimal dilutions or concentrations should be determined by the scientist.

Properties

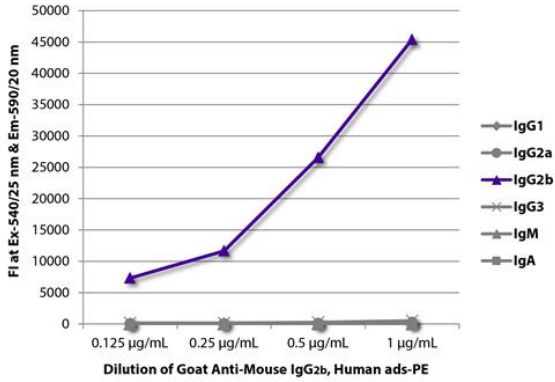
| | |
|---------------------|--|
| Form | Liquid |
| Purification | Affinity purification with immunogen. |
| Buffer | PBS, 0.1% Sodium azide and Sucrose. |
| Preservative | 0.1% Sodium azide |
| Stabilizer | Sucrose |
| Concentration | 0.5 mg/ml |
| Storage instruction | Aliquot and store in the dark at 2-8°C. Keep protected from prolonged exposure to light. Avoid |

repeated freeze/thaw cycles. Suggest spin the vial prior to opening. The antibody solution should be gently mixed before use.

Note

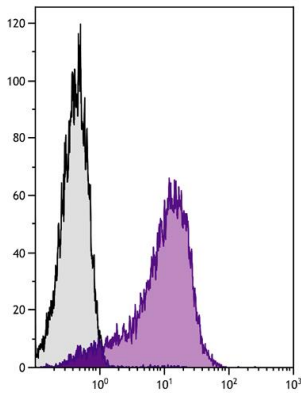
For laboratory research only, not for drug, diagnostic or other use.

Images



ARG21575 Goat anti-Mouse IgG2b antibody (PE) (pre-adsorbed)
FLISA image

FLISA: The plate was coated with purified Mouse IgG1, IgG2a, IgG2b, IgG3, IgM and IgA. Immunoglobulins were detected with serially diluted ARG21575 Goat anti-Mouse IgG2b antibody (PE) (pre-adsorbed).



ARG21575 Goat anti-Mouse IgG2b antibody (PE) (pre-adsorbed)
FACS image

Flow Cytometry: Chicken thymocytes stained with [ARG21220](#) anti-CD146 antibody [C264] followed by ARG21575 Goat anti-Mouse IgG2b antibody (PE) (pre-adsorbed).