

ARG21609
Rat anti-Mouse IgG1 antibody [SB77e] (PE)Package: 100 µg
Store at: 4°C

Summary

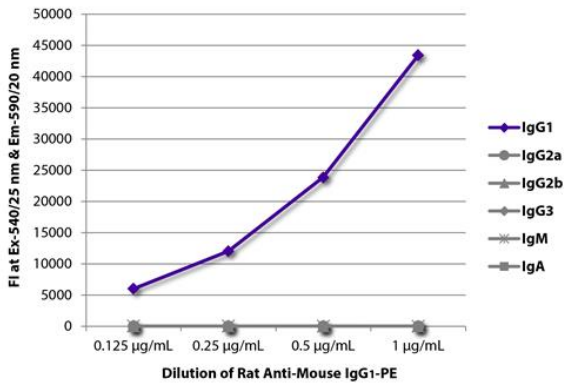
Product Description	PE-conjugated Rat Monoclonal antibody [SB77e] recognizes Mouse IgG1
Tested Reactivity	Ms
Tested Application	FACS, FLISA, IHC-Fr, WB
Host	Rat
Clonality	Monoclonal
Clone	SB77e
Isotype	IgG2b, kappa
Target Name	IgG1
Species	Mouse
Conjugation	PE

Application Instructions

Application table	Application	Dilution
	FACS	< 0.1 µg/10 ⁶ cells
	FLISA	< 1 µg/ml
	IHC-Fr	Assay-dependent
	WB	Assay-dependent
Application Note	* The dilutions indicate recommended starting dilutions and the optimal dilutions or concentrations should be determined by the scientist.	

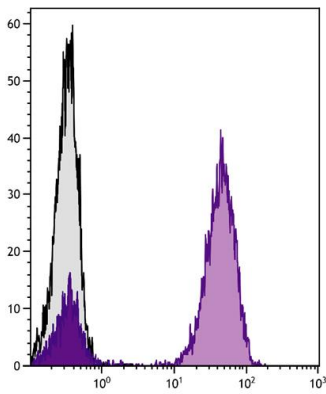
Properties

Form	Liquid
Buffer	PBS, 0.1% Sodium azide and Sucrose.
Preservative	0.1% Sodium azide
Stabilizer	Sucrose
Concentration	0.1 mg/ml
Storage instruction	Aliquot and store in the dark at 2-8°C. Keep protected from prolonged exposure to light. Avoid repeated freeze/thaw cycles. Suggest spin the vial prior to opening. The antibody solution should be gently mixed before use.
Note	For laboratory research only, not for drug, diagnostic or other use.



ARG21609 Rat anti-Mouse IgG1 antibody [SB77e] (PE) FLISA image

FLISA: The plate was coated with purified Mouse IgG1, IgG2a, IgG2b, IgG3, IgM and IgA. Immunoglobulins were detected with serially diluted ARG21609 Rat anti-Mouse IgG1 antibody [SB77e] (PE).



ARG21609 Rat anti-Mouse IgG1 antibody [SB77e] (PE) FACS image

Flow Cytometry: Human peripheral blood lymphocytes stained with Mouse anti-Human CD3 antibody followed by ARG21609 Rat anti-Mouse IgG1 antibody [SB77e] (PE).