

ARG21615 Rat anti-Mouse IgG2a antibody [SB84a] (PE)

Package: 100 µg
Store at: 4°C

Summary

Product Description	PE-conjugated Rat Monoclonal antibody [SB84a] recognizes Mouse IgG2a
Tested Reactivity	Ms
Tested Application	FACS, FLISA, ICC/IF, IHC-Fr, WB
Host	Rat
Clonality	Monoclonal
Clone	SB84a
Isotype	IgG1, kappa
Target Name	IgG2a
Species	Mouse
Immunogen	Mouse IgG2a hybridoma
Conjugation	PE

Application Instructions

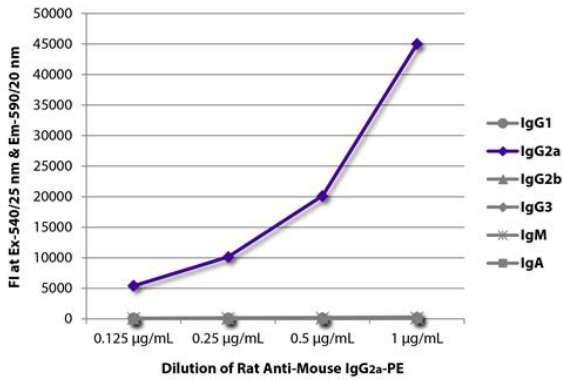
Application table	Application	Dilution
	FACS	< 0.2 ug/10 ⁶ cells
	FLISA	< 1 ug/ml
	ICC/IF	Assay-dependent
	IHC-Fr	Assay-dependent
	WB	Assay-dependent

Application Note * The dilutions indicate recommended starting dilutions and the optimal dilutions or concentrations should be determined by the scientist.

Properties

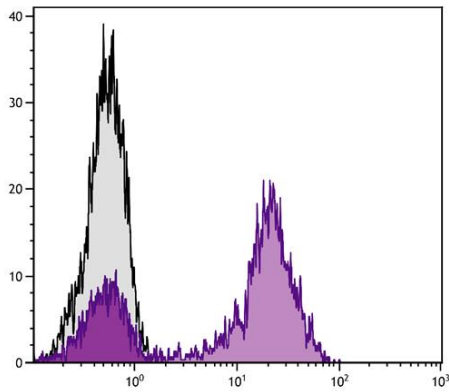
Form	Liquid
Buffer	PBS, 0.1% Sodium azide and Sucrose.
Preservative	0.1% Sodium azide
Stabilizer	Sucrose
Concentration	0.1 mg/ml
Storage instruction	Aliquot and store in the dark at 2-8°C. Keep protected from prolonged exposure to light. Avoid repeated freeze/thaw cycles. Suggest spin the vial prior to opening. The antibody solution should be gently mixed before use.

Images



ARG21615 Rat anti-Mouse IgG2a antibody [SB84a] (PE) FLISA image

FLISA: The plate was coated with purified Mouse IgG1, IgG2a, IgG2b, IgG3, IgM and IgA. Immunoglobulins were detected with serially diluted ARG21615 Rat anti-Mouse IgG2a antibody [SB84a] (PE).



ARG21615 Rat anti-Mouse IgG2a antibody [SB84a] (PE) FACS image

Flow Cytometry: Human peripheral blood lymphocytes stained with Mouse anti-Human CD5 antibody followed by ARG21615 Rat anti-Mouse IgG2a antibody [SB84a] (PE).