

ARG21697 Mouse anti-Rat IgG1 antibody [G17E7] (Biotin)

Package: 250 µg
Store at: 4°C

Summary

Product Description	Biotin-conjugated Mouse Monoclonal antibody [G17E7] recognizes Rat IgG1
Tested Reactivity	Rat
Tested Application	ELISA, FACS, FLISA, IHC-Fr
Host	Mouse
Clonality	Monoclonal
Clone	G17E7
Isotype	IgG1, kappa
Target Name	IgG1
Species	Rat
Immunogen	Rat IgG1 hybridoma
Conjugation	Biotin

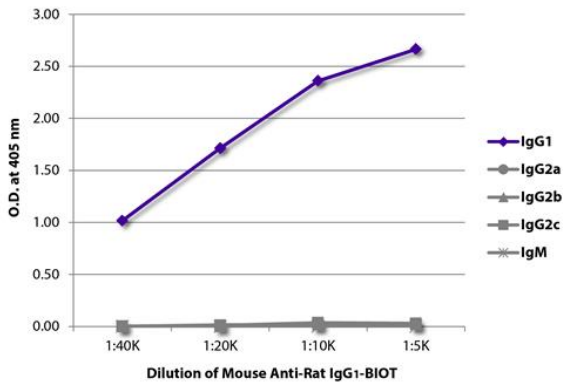
Application Instructions

Application table	Application	Dilution
	ELISA	1:5000 - 1:20000
	FACS	< 1 ug/10 ⁶ cells
	FLISA	Assay-dependent
	IHC-Fr	Assay-dependent

Application Note * The dilutions indicate recommended starting dilutions and the optimal dilutions or concentrations should be determined by the scientist.

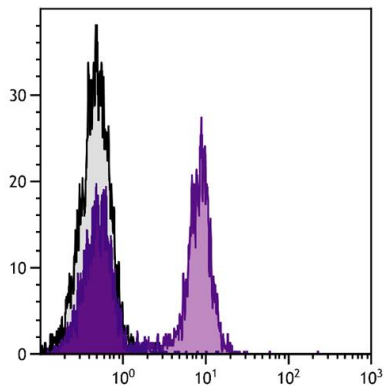
Properties

Form	Liquid
Buffer	PBS and 0.1% Sodium azide.
Preservative	0.1% Sodium azide
Concentration	0.5 mg/ml
Storage instruction	Aliquot and store in the dark at 2-8°C. Keep protected from prolonged exposure to light. Avoid repeated freeze/thaw cycles. Suggest spin the vial prior to opening. The antibody solution should be gently mixed before use.
Note	For laboratory research only, not for drug, diagnostic or other use.



ARG21697 Mouse anti-Rat IgG1 antibody [G17E7] (Biotin) ELISA image

ELISA: The plate was coated with purified Rat IgG1, IgG2a, IgG2b, IgG2c, and IgM. Immunoglobulins were detected with serially diluted ARG21697 Mouse anti-Rat IgG1 antibody [G17E7] (Biotin) followed by [ARG23912](#) Streptavidin (HRP).



ARG21697 Mouse anti-Rat IgG1 antibody [G17E7] (Biotin) FACS image

Flow Cytometry: BALB/c Mouse splenocytes stained with [ARG20867](#) anti-CD22 antibody [2D6] followed by ARG21697 Mouse anti-Rat IgG1 antibody [G17E7] (Biotin) and Streptavidin (FITC).