

ARG21712 Mouse anti-Rat IgG2c antibody [2C8F1] (FITC)

Package: 250 µg
Store at: 4°C

Summary

Product Description	FITC-conjugated Mouse Monoclonal antibody [2C8F1] recognizes Rat IgG2c
Tested Reactivity	Rat
Tested Application	FACS, FLISA, IHC-Fr
Host	Mouse
Clonality	Monoclonal
Clone	2C8F1
Isotype	IgG2a, kappa
Target Name	IgG2c
Species	Rat
Immunogen	Rat IgG2c hybridoma
Conjugation	FITC

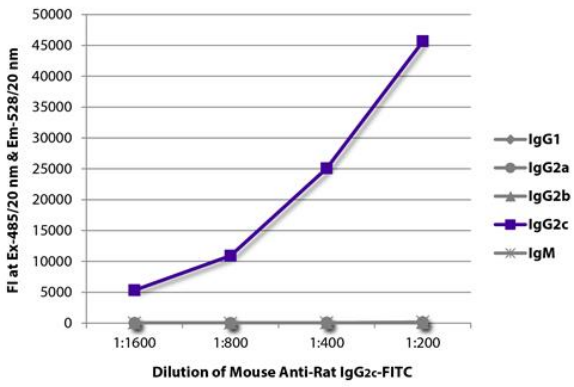
Application Instructions

Application table	Application	Dilution
	FACS	< 1 ug/10 ⁶ cells
	FLISA	1:200 - 1:400
	IHC-Fr	Assay-dependent

Application Note * The dilutions indicate recommended starting dilutions and the optimal dilutions or concentrations should be determined by the scientist.

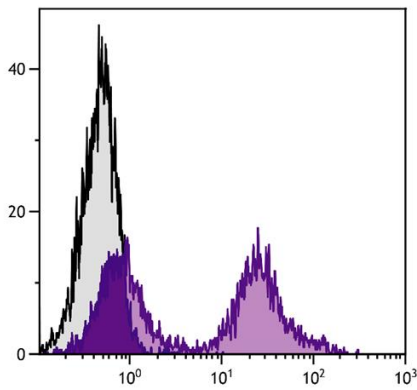
Properties

Form	Liquid
Buffer	PBS and 0.1% Sodium azide.
Preservative	0.1% Sodium azide
Concentration	0.5 mg/ml
Storage instruction	Aliquot and store in the dark at 2-8°C. Keep protected from prolonged exposure to light. Avoid repeated freeze/thaw cycles. Suggest spin the vial prior to opening. The antibody solution should be gently mixed before use.
Note	For laboratory research only, not for drug, diagnostic or other use.



ARG21712 Mouse anti-Rat IgG2c antibody [2C8F1] (FITC) FLISA image

FLISA: The plate was coated with purified Rat IgG1, IgG2a, IgG2b, IgG2c and IgM. Immunoglobulins were detected with serially diluted ARG21712 Mouse anti-Rat IgG2c antibody [2C8F1] (FITC).



ARG21712 Mouse anti-Rat IgG2c antibody [2C8F1] (FITC) FACS image

Flow Cytometry: BALB/c Mouse splenocytes stained with [ARG22086](#) anti-CD24 antibody [30-F1] followed by ARG21712 Mouse anti-Rat IgG2c antibody [2C8F1] (FITC).