

## ARG21775 Pig anti-Goat IgG (H+L) antibody (Biotin), pre-adsorbed

Package: 500 µg  
Store at: 4°C

### Summary

Product Description	Biotin-conjugated Pig Polyclonal antibody recognizes Goat IgG (H+L)
Tested Reactivity	Goat
Tested Application	ELISA, FACS, FLISA, IHC-Fr, IHC-P, WB
Specificity	Reacts with the heavy and light chains of goat IgG
Host	Pig
Clonality	Polyclonal
Isotype	IgG
Target Name	IgG (H+L)
Species	Goat
Conjugation	Biotin

### Application Instructions

Pre Adsorbed Human, Rat, and Mouse serum proteins.

#### Application table

Application	Dilution
ELISA	1:5000 - 1:20000
FACS	Assay-dependent
FLISA	Assay-dependent
IHC-Fr	Assay-dependent
IHC-P	Assay-dependent
WB	Assay-dependent

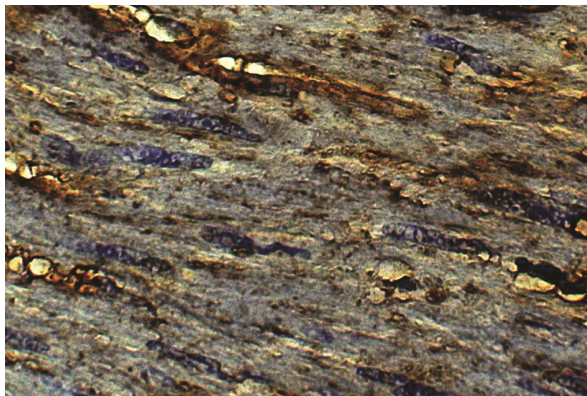
Application Note \* The dilutions indicate recommended starting dilutions and the optimal dilutions or concentrations should be determined by the scientist.

### Properties

Form	Liquid
Purification	Affinity purification with immunogen.
Buffer	PBS and 0.1% Sodium azide.
Preservative	0.1% Sodium azide
Concentration	0.5 mg/ml
Storage instruction	Aliquot and store in the dark at 2-8°C. Keep protected from prolonged exposure to light. Avoid repeated freeze/thaw cycles. Suggest spin the vial prior to opening. The antibody solution should be gently mixed before use.

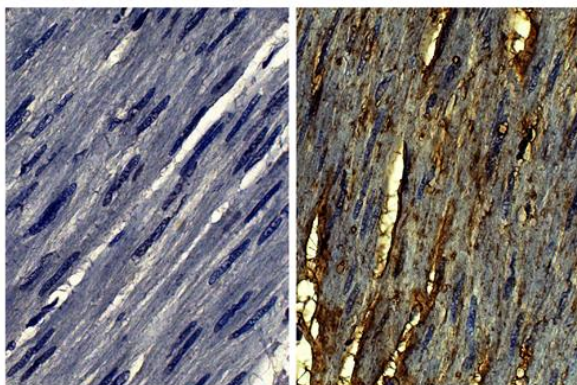
## Images

---



ARG21775 Pig anti-Goat IgG (H+L) antibody (Biotin), pre-adsorbed  
IHC-Fr image

Immunohistochemistry: Human kidney cancer tissue stained with [ARG20792](#) anti-Collagen VI antibody followed by [ARG21775](#) Pig anti-Goat IgG (H+L) antibody (Biotin), pre-adsorbed and streptavidin-HRP.



ARG21775 Pig anti-Goat IgG (H+L) antibody (Biotin) (pre-adsorbed)  
IHC-P image

Immunohistochemistry: Paraffin-embedded Human gastric cancer tissue stained with [ARG23772](#) Goat IgG Isotype Control antibody (left) and [ARG20792](#) anti-Collagen VI antibody (pre-adsorbed) (right), followed by ARG21775 Pig anti-Goat IgG (H+L) antibody (Biotin) (pre-adsorbed), [ARG23912](#) Streptavidin (HRP), DAB and hematoxylin.