

ARG21777 Donkey anti-Goat IgG (H+L) antibody (AP), pre-adsorbed

Package: 500 µl
Store at: 4°C

Summary

Product Description	AP-conjugated Donkey Polyclonal antibody recognizes Goat IgG (H+L)
Tested Reactivity	Goat
Tested Application	ELISA, FACS, FLISA, IHC-Fr, IHC-P, WB
Specificity	Reacts with the heavy and light chains of goat IgG
Host	Donkey
Clonality	Polyclonal
Isotype	IgG
Target Name	IgG (H+L)
Species	Goat
Conjugation	AP

Application Instructions

Pre Adsorbed Mouse and Rat serum proteins.

Application table

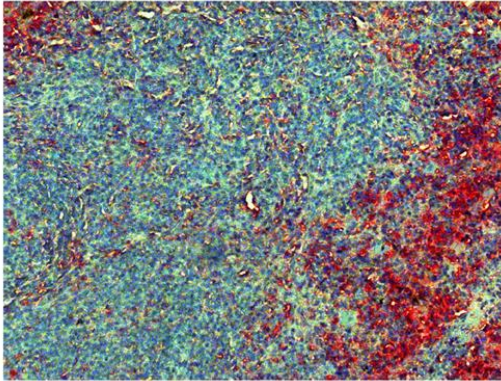
Application	Dilution
ELISA	1:2000 - 1:4000
FACS	Assay-dependent
FLISA	Assay-dependent
IHC-Fr	Assay-dependent
IHC-P	Assay-dependent
WB	Assay-dependent

Application Note * The dilutions indicate recommended starting dilutions and the optimal dilutions or concentrations should be determined by the scientist.

Properties

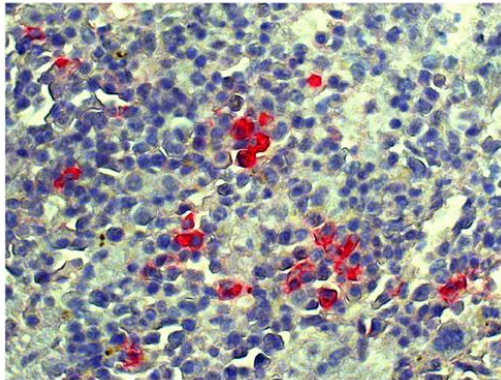
Form	Liquid
Purification	Affinity purification with immunogen.
Buffer	50 mM Tris (pH 8.0), 0.1% Sodium azide, 1 mM MgCl ₂ and 50% Glycerol
Preservative	0.1% Sodium azide
Stabilizer	50% Glycerol
Storage instruction	Aliquot and store in the dark at 2-8°C. Keep protected from prolonged exposure to light. Avoid repeated freeze/thaw cycles. Suggest spin the vial prior to opening. The antibody solution should be gently mixed before use.

Images



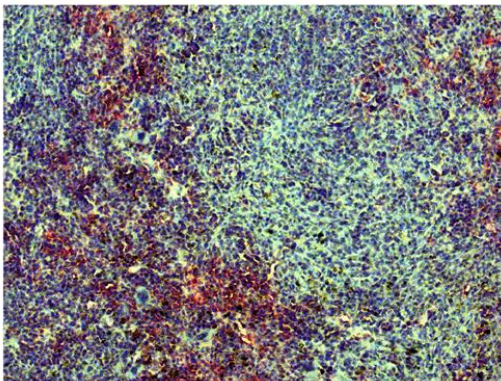
ARG21777 Donkey anti-Goat IgG (H+L) antibody (AP) (pre-adsorbed)
IHC-P image

Immunohistochemistry: Paraffin-embedded Mouse spleen tissue stained with [ARG21547](#) Goat anti-Mouse Kappa Light Chain antibody (pre-adsorbed) followed by ARG21777 Donkey anti-Goat IgG (H+L) antibody (AP) (pre-adsorbed), Red AP and hematoxylin.



ARG21777 Donkey anti-Goat IgG (H+L) antibody (AP) (pre-adsorbed)
IHC-P image

Immunohistochemistry: Paraffin-embedded Mouse spleen tissue stained with [ARG21555](#) Goat anti-Mouse Lambda Light Chain antibody (pre-adsorbed) followed by ARG21777 Donkey anti-Goat IgG (H+L) antibody (AP) (pre-adsorbed), Red AP and hematoxylin.



ARG21777 Donkey anti-Goat IgG (H+L) antibody (AP) (pre-adsorbed)
IHC-P image

Immunohistochemistry: Paraffin-embedded Mouse spleen tissue stained with Goat F(ab')₂ anti-Mouse Kappa Light Chain antibody followed by ARG21777 Donkey anti-Goat IgG (H+L) antibody (AP) (pre-adsorbed), Red AP and hematoxylin.
