

ARG21780 Donkey anti-Rabbit IgG (H+L) antibody (FITC), pre-adsorbed

Package: 500 µg
Store at: 4°C

Summary

Product Description	FITC-conjugated Donkey Polyclonal antibody recognizes Rabbit IgG (H+L)
Tested Reactivity	Rb
Tested Application	ELISA, FACS, FLISA, ICC/IF, IHC-P, WB
Specificity	Reacts with the heavy and light chains of rabbit IgG and the light chains of rabbit IgM
Host	Donkey
Clonality	Polyclonal
Isotype	IgG
Target Name	IgG (H+L)
Species	Rabbit
Conjugation	FITC

Application Instructions

Pre Adsorbed Mouse, Rat, and Human serum proteins.

Application table

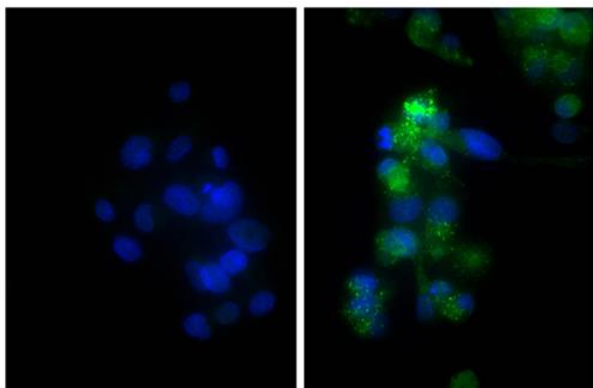
Application	Dilution
ELISA	Assay-dependent
FACS	1:100 - 1:400
FLISA	1:100 - 1:400
ICC/IF	1:100 - 1:400
IHC-P	1:100 - 1:400
WB	Assay-dependent

Application Note * The dilutions indicate recommended starting dilutions and the optimal dilutions or concentrations should be determined by the scientist.

Properties

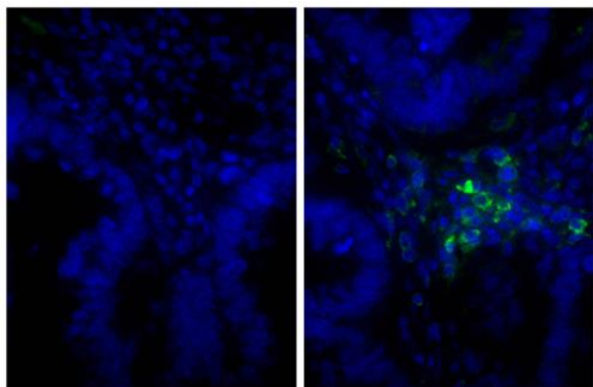
Form	Liquid
Purification	Affinity purification with immunogen.
Buffer	PBS and 0.1% Sodium azide.
Preservative	0.1% Sodium azide
Concentration	1 mg/ml
Storage instruction	Aliquot and store in the dark at 2-8°C. Keep protected from prolonged exposure to light. Avoid repeated freeze/thaw cycles. Suggest spin the vial prior to opening. The antibody solution should be gently mixed before use.

Images



ARG21780 Donkey anti-Rabbit IgG (H+L) antibody (FITC), pre-adsorbed ICC/IF image

Immunofluorescence: HepG2 cells stained with Rabbit IgG as an isotype control (left) and [ARG22343](#) anti-DR5 antibody (right), followed by 1:200 diluted ARG21780 Donkey anti-Rabbit IgG (H+L) antibody (FITC), pre-adsorbed and DAPI.



ARG21780 Donkey anti-Rabbit IgG (H+L) antibody (FITC), pre-adsorbed IHC-P image

Immunohistochemistry: Paraffin-embedded Human gastric cancer tissue stained with Rabbit IgG as an isotype control (left) and Rabbit anti-Human IgG (H+L) (right), followed by ARG21780 Donkey anti-Rabbit IgG (H+L) antibody (FITC), pre-adsorbed and DAPI.