

## ARG21782 Donkey anti-Rabbit IgG (H+L) antibody (Biotin), pre-adsorbed

Package: 500 µg  
Store at: 4°C

### Summary

Product Description	Biotin-conjugated Donkey Polyclonal antibody recognizes Rabbit IgG (H+L)
Tested Reactivity	Rb
Tested Application	ELISA, FACS, FLISA, ICC/IF, IHC-P, WB
Specificity	Reacts with the heavy and light chains of rabbit IgG and the light chains of rabbit IgM
Host	Donkey
Clonality	Polyclonal
Isotype	IgG
Target Name	IgG (H+L)
Species	Rabbit
Conjugation	Biotin

### Application Instructions

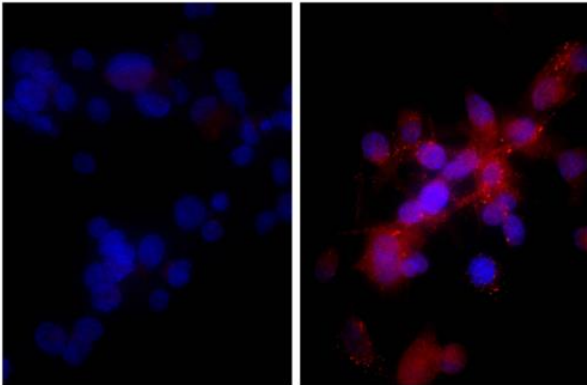
Pre Adsorbed	Mouse, Rat, and Human serum proteins.														
Application table	<table><thead><tr><th>Application</th><th>Dilution</th></tr></thead><tbody><tr><td>ELISA</td><td>1:5000 - 1:20000</td></tr><tr><td>FACS</td><td>Assay-dependent</td></tr><tr><td>FLISA</td><td>Assay-dependent</td></tr><tr><td>ICC/IF</td><td>Assay-dependent</td></tr><tr><td>IHC-P</td><td>Assay-dependent</td></tr><tr><td>WB</td><td>Assay-dependent</td></tr></tbody></table>	Application	Dilution	ELISA	1:5000 - 1:20000	FACS	Assay-dependent	FLISA	Assay-dependent	ICC/IF	Assay-dependent	IHC-P	Assay-dependent	WB	Assay-dependent
Application	Dilution														
ELISA	1:5000 - 1:20000														
FACS	Assay-dependent														
FLISA	Assay-dependent														
ICC/IF	Assay-dependent														
IHC-P	Assay-dependent														
WB	Assay-dependent														
Application Note	* The dilutions indicate recommended starting dilutions and the optimal dilutions or concentrations should be determined by the scientist.														

### Properties

Form	Liquid
Purification	Affinity purification with immunogen.
Buffer	PBS and 0.1% Sodium azide.
Preservative	0.1% Sodium azide
Concentration	0.5 mg/ml
Storage instruction	Aliquot and store in the dark at 2-8°C. Keep protected from prolonged exposure to light. Avoid repeated freeze/thaw cycles. Suggest spin the vial prior to opening. The antibody solution should be gently mixed before use.

## Images

---



ARG21782 Donkey anti-Rabbit IgG (H+L) antibody (Biotin) (pre-adsorbed) ICC/IF image

Immunofluorescence: Human hepatocellular carcinoma cell line HepG2 stained with Rabbit IgG isotype control (left) and [ARG22343](#) anti-CD262 / TRAIL R2 antibody (right) followed by ARG21782 Donkey anti-Rabbit IgG (H+L) antibody (Biotin) (pre-adsorbed), Streptavidin (Cy3) and DAPI.