

ARG21884 Goat anti-Mouse IgG1 antibody (FITC), pre-adsorbed

Package: 500 µg
Store at: 4°C

Summary

Product Description	FITC-conjugated Goat Polyclonal antibody recognizes Mouse IgG1
Tested Reactivity	Ms
Tested Application	EM, FACS, FLISA, ICC/IF, IHC-Fr, IHC-P, WB
Specificity	Reacts with the heavy chain of mouse IgG1
Host	Goat
Clonality	Polyclonal
Isotype	IgG
Target Name	IgG1
Species	Mouse
Conjugation	FITC

Application Instructions

Pre Adsorbed Mouse IgG2a, IgG2b, IgG3, IgM, and IgA; Human immunoglobulins and pooled sera.

Application table

Application	Dilution
EM	Assay-dependent
FACS	< 1 ug/10 ⁶ cells
FLISA	1:100 - 1:400
ICC/IF	Assay-dependent
IHC-Fr	Assay-dependent
IHC-P	Assay-dependent
WB	Assay-dependent

Application Note * The dilutions indicate recommended starting dilutions and the optimal dilutions or concentrations should be determined by the scientist.

Properties

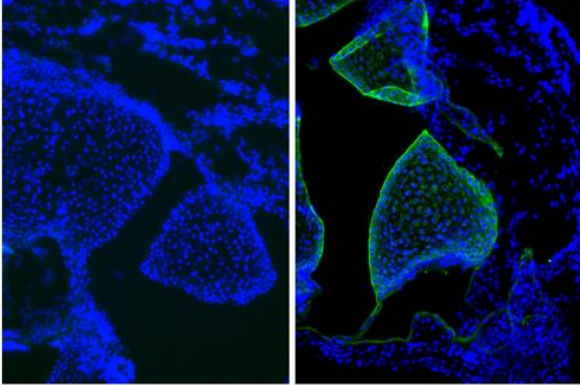
Form	Liquid
Purification	Affinity purification with immunogen.
Buffer	PBS and 0.1% Sodium azide.
Preservative	0.1% Sodium azide
Concentration	1 mg/ml
Storage instruction	Aliquot and store in the dark at 2-8°C. Keep protected from prolonged exposure to light. Avoid

repeated freeze/thaw cycles. Suggest spin the vial prior to opening. The antibody solution should be gently mixed before use.

Note

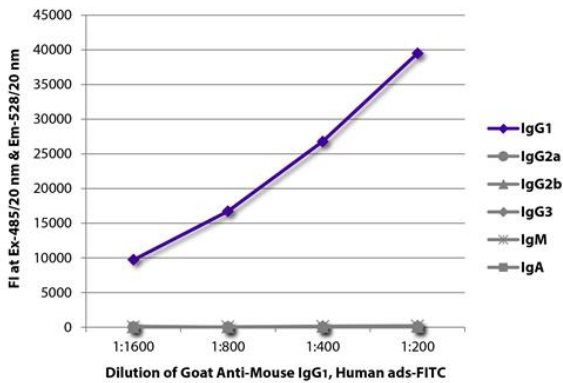
For laboratory research only, not for drug, diagnostic or other use.

Images



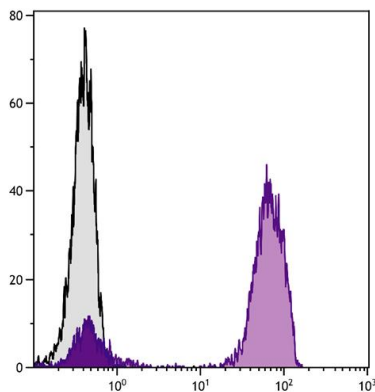
ARG21884 Goat anti-Mouse IgG1 antibody (FITC) (pre-adsorbed) IHC-Fr image

Immunohistochemistry: Frozen section of newborn Mouse cartilage tissue stained with Mouse IgG1 isotype control (left) and anti-Type II Collagen antibody (right) followed by ARG21884 Goat anti-Mouse IgG1 antibody (FITC) (pre-adsorbed) and DAPI.



ARG21884 Goat anti-Mouse IgG1 antibody (FITC) (pre-adsorbed) FLISA image

FLISA: The plate was coated with purified Mouse IgG1, IgG2a, IgG2b, IgG3, IgM and IgA. Immunoglobulins were detected with serially diluted ARG21884 Goat anti-Mouse IgG1 antibody (FITC) (pre-adsorbed).



ARG21884 Goat anti-Mouse IgG1 antibody (FITC) (pre-adsorbed) FACS image

Flow Cytometry: Human peripheral blood lymphocytes stained with Mouse anti-Human CD3 antibody followed by ARG21884 Goat anti-Mouse IgG1 antibody (FITC) (pre-adsorbed).