

## ARG21887 Goat anti-Mouse IgG1 antibody (Biotin), pre-adsorbed

Package: 500 µg  
Store at: 4°C

### Summary

|                     |  |
|---------------------|--|
| Product Description | Biotin-conjugated Goat Polyclonal antibody recognizes Mouse IgG1 |
| Tested Reactivity   | Ms   |
| Tested Application  | ELISA, ELISPOT, EM, FACS, FLISA, ICC/IF, IHC-Fr, IHC-P, WB       |
| Specificity         | Reacts with the heavy chain of mouse IgG1                        |
| Host                | Goat   |
| Clonality           | Polyclonal   |
| Isotype             | IgG  |
| Target Name         | IgG1   |
| Species             | Mouse  |
| Conjugation         | Biotin   |

### Application Instructions

Pre Adsorbed Mouse IgG2a, IgG2b, IgG3, IgM, and IgA; Human immunoglobulins and pooled sera.

#### Application table

| Application | Dilution                     |
|-------------|------------------------------|
| ELISA       | 1:5000 - 1:20000             |
| ELISPOT     | Assay-dependent              |
| EM          | Assay-dependent              |
| FACS        | < 1 µg/10 <sup>6</sup> cells |
| FLISA       | Assay-dependent              |
| ICC/IF      | Assay-dependent              |
| IHC-Fr      | Assay-dependent              |
| IHC-P       | Assay-dependent              |
| WB          | Assay-dependent              |

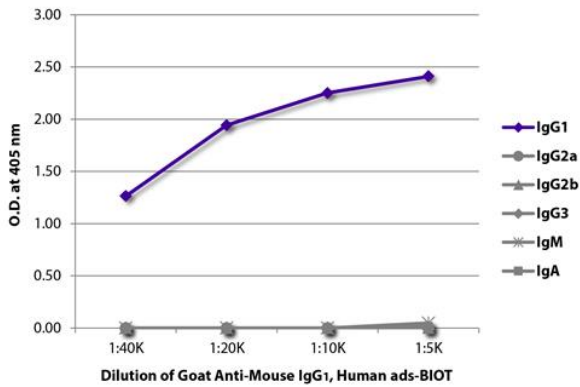
Application Note \* The dilutions indicate recommended starting dilutions and the optimal dilutions or concentrations should be determined by the scientist.

### Properties

|              |                                       |
|--------------|---------------------------------------|
| Form         | Liquid                                |
| Purification | Affinity purification with immunogen. |
| Buffer       | PBS and 0.1% Sodium azide.            |
| Preservative | 0.1% Sodium azide                     |

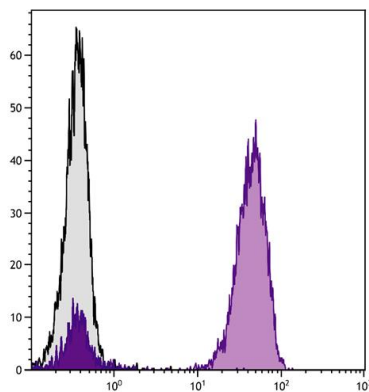
|                     |  |
|---------------------|--|
| Concentration       | 0.5 mg/ml  |
| Storage instruction | Aliquot and store in the dark at 2-8°C. Keep protected from prolonged exposure to light. Avoid repeated freeze/thaw cycles. Suggest spin the vial prior to opening. The antibody solution should be gently mixed before use. |
| Note                | For laboratory research only, not for drug, diagnostic or other use.   |

## Images



ARG21887 Goat anti-Mouse IgG1 antibody (Biotin) (pre-adsorbed)  
ELISA image

ELISA: The plate was coated with purified Mouse IgG1, IgG2a, IgG2b, IgG3, IgM, and IgA. Immunoglobulins were detected with serially diluted ARG21887 Goat anti-Mouse IgG1 antibody (Biotin) (pre-adsorbed) followed by [ARG23912](#) Streptavidin (HRP).



ARG21887 Goat anti-Mouse IgG1 antibody (Biotin) (pre-adsorbed)  
FACS image

Flow Cytometry: Human peripheral blood lymphocytes stained with Mouse anti-Human CD3 antibody followed by ARG21887 Goat anti-Mouse IgG1 antibody (Biotin) (pre-adsorbed) followed by Streptavidin (FITC).