

ARG21888 Goat anti-Mouse IgG1 antibody, F(ab')₂ fragment, pre-adsorbed

Package: 250 µg
Store at: -20°C

Summary

Product Description	F(ab') ₂ fragment of Goat Polyclonal antibody recognizes Mouse IgG1
Tested Reactivity	Ms
Tested Application	ELISA, FACS, FLISA, ICC/IF, IHC-Fr, IHC-P
Specificity	Reacts with the heavy chain of mouse IgG1
Host	Goat
Clonality	Polyclonal
Isotype	F(ab') ₂ IgG
Target Name	IgG1
Species	Mouse
Conjugation	Un-conjugated

Application Instructions

Pre Adsorbed Mouse IgG2a, IgG2b, IgG3, IgM, and IgA; Human immunoglobulins and pooled sera.

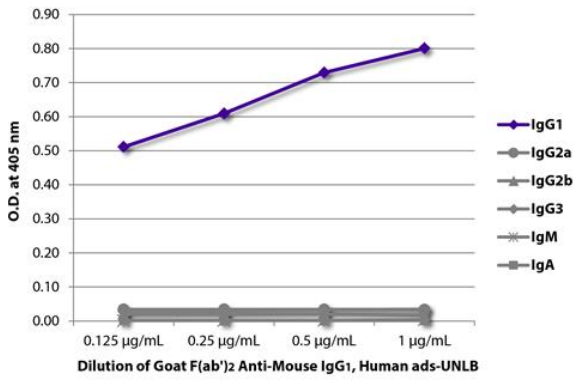
Application table

Application	Dilution
ELISA	Assay-dependent
FACS	Assay-dependent
FLISA	Assay-dependent
ICC/IF	Assay-dependent
IHC-Fr	Assay-dependent
IHC-P	Assay-dependent

Application Note * The dilutions indicate recommended starting dilutions and the optimal dilutions or concentrations should be determined by the scientist.

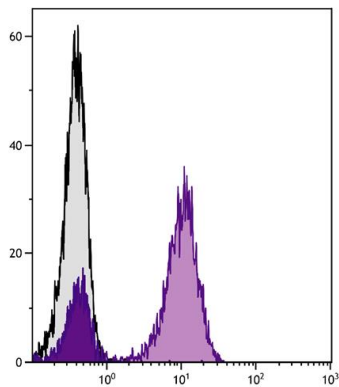
Properties

Form	Liquid
Buffer	BBS (pH 8.2)
Concentration	0.5 mg/ml
Storage instruction	For continuous use, store undiluted antibody at 2-8°C for up to a week. For long-term storage, aliquot and store at -20°C. Storage in frost free freezers is not recommended. Avoid repeated freeze/thaw cycles. Suggest spin the vial prior to opening. The antibody solution should be gently mixed before use.
Note	For laboratory research only, not for drug, diagnostic or other use.



ARG21888 Goat anti-Mouse IgG1 antibody, F(ab')2 fragment (pre-adsorbed) ELISA image

ELISA: The plate was coated with purified Mouse IgG1, IgG2a, IgG2b, IgG3, IgM, and IgA. Immunoglobulins were detected with serially diluted ARG21888 Goat anti-Mouse IgG1 antibody, F(ab')2 fragment (pre-adsorbed) followed by [ARG23857](#) Swine anti-Goat IgG (H+L) antibody (HRP) (pre-adsorbed).



ARG21888 Goat anti-Mouse IgG1 antibody, F(ab')2 fragment (pre-adsorbed) FACS image

Flow Cytometry: Human peripheral blood lymphocytes stained with Mouse anti-Human CD3 antibody followed by ARG21888 Goat anti-Mouse IgG1 antibody, F(ab')2 fragment (pre-adsorbed) followed by [ARG23856](#) Swine anti-Goat IgG (H+L) antibody (FITC) (pre-adsorbed).