

ARG21892 Goat anti-Mouse IgG2b antibody (FITC), pre-adsorbed

Package: 500 µg
Store at: 4°C

Summary

Product Description	FITC-conjugated Goat Polyclonal antibody recognizes Mouse IgG2b
Tested Reactivity	Ms
Tested Application	FACS, FLISA, ICC/IF, IHC-Fr, IHC-P, WB
Specificity	Reacts with the heavy chain of mouse IgG2b
Host	Goat
Clonality	Polyclonal
Isotype	IgG
Target Name	IgG2b
Species	Mouse
Conjugation	FITC

Application Instructions

Pre Adsorbed Mouse IgG1, IgG2a, IgG3, IgM, and IgA; Human immunoglobulins and pooled sera.

Application table

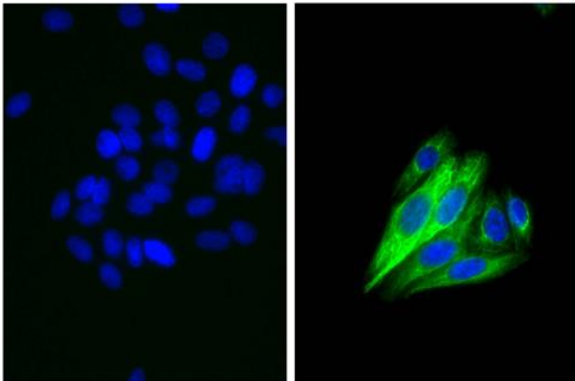
Application	Dilution
FACS	< 1 ug/10 ⁶ cells
FLISA	1:100 - 1:400
ICC/IF	Assay-dependent
IHC-Fr	Assay-dependent
IHC-P	Assay-dependent
WB	Assay-dependent

Application Note * The dilutions indicate recommended starting dilutions and the optimal dilutions or concentrations should be determined by the scientist.

Properties

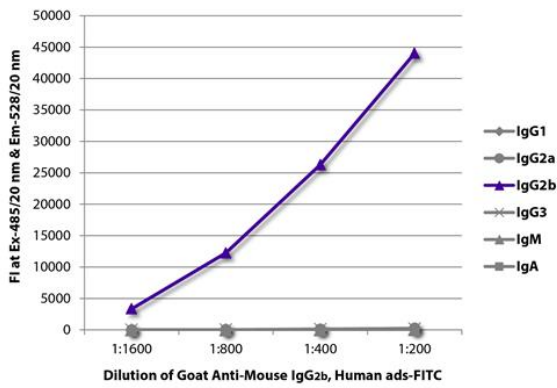
Form	Liquid
Purification	Affinity purification with immunogen.
Buffer	PBS and 0.1% Sodium azide.
Preservative	0.1% Sodium azide
Concentration	1 mg/ml
Storage instruction	Aliquot and store in the dark at 2-8°C. Keep protected from prolonged exposure to light. Avoid repeated freeze/thaw cycles. Suggest spin the vial prior to opening. The antibody solution should be gently mixed before use.

Images



ARG21892 Goat anti-Mouse IgG2b antibody (FITC) (pre-adsorbed) ICC/IF image

Immunofluorescence: Human epithelial carcinoma cell line HEp-2 stained with anti-Cytokeratin 18 antibody (right) followed by ARG21892 Goat anti-Mouse IgG2b antibody (FITC) (pre-adsorbed) and DAPI.



ARG21892 Goat anti-Mouse IgG2b antibody (FITC) (pre-adsorbed) FLISA image

FLISA: The plate was coated with purified Mouse IgG1, IgG2a, IgG2b, IgG3, IgM and IgA. Immunoglobulins were detected with serially diluted ARG21892 Goat anti-Mouse IgG2b antibody (FITC) (pre-adsorbed).