

## ARG21894 Goat anti-Mouse IgG2b antibody (HRP), pre-adsorbed

Package: 500 µl  
Store at: 4°C

### Summary

Product Description	HRP-conjugated Goat Polyclonal antibody recognizes Mouse IgG2b
Tested Reactivity	Ms
Tested Application	ELISA, ELISPOT, FACS, FLISA, ICC/IF, IHC-Fr, IHC-P, WB
Specificity	Reacts with the heavy chain of mouse IgG2b
Host	Goat
Clonality	Polyclonal
Isotype	IgG
Target Name	IgG2b
Species	Mouse
Conjugation	HRP

### Application Instructions

Pre Adsorbed Mouse IgG1, IgG2a, IgG3, IgM, and IgA; Human immunoglobulins and pooled sera.

#### Application table

Application	Dilution
ELISA	1:4000 - 1:8000
ELISPOT	Assay-dependent
FACS	Assay-dependent
FLISA	Assay-dependent
ICC/IF	Assay-dependent
IHC-Fr	Assay-dependent
IHC-P	Assay-dependent
WB	Assay-dependent

Application Note \* The dilutions indicate recommended starting dilutions and the optimal dilutions or concentrations should be determined by the scientist.

### Properties

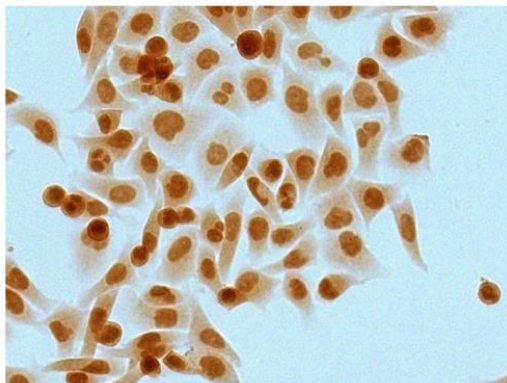
Form	Liquid
Purification	Affinity purification with immunogen.
Buffer	50% PBS (pH 7.4) and 50% Glycerol
Stabilizer	50% Glycerol
Storage instruction	Aliquot and store in the dark at 2-8°C. Keep protected from prolonged exposure to light. Avoid

repeated freeze/thaw cycles. Suggest spin the vial prior to opening. The antibody solution should be gently mixed before use.

Note

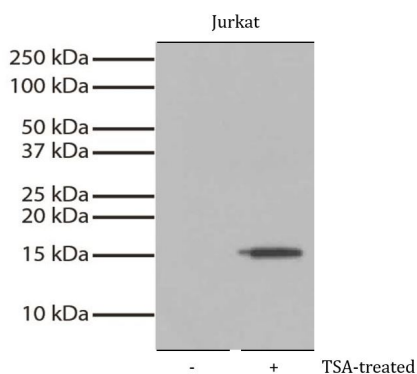
For laboratory research only, not for drug, diagnostic or other use.

## Images



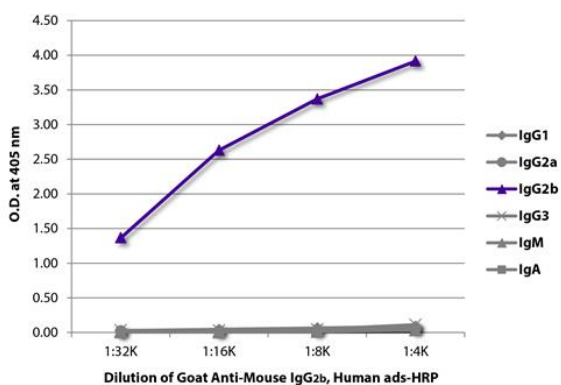
ARG21894 Goat anti-Mouse IgG2b antibody (HRP) (pre-adsorbed) ICC image

Immunocytochemistry: Human pancreatic carcinoma cell line MIA PaCa-2 stained with anti-Histone H3 acetyl (Lys4) antibody followed by ARG21894 Goat anti-Mouse IgG2b antibody (HRP) (pre-adsorbed), DAB and mounted with Fluoromount-G.



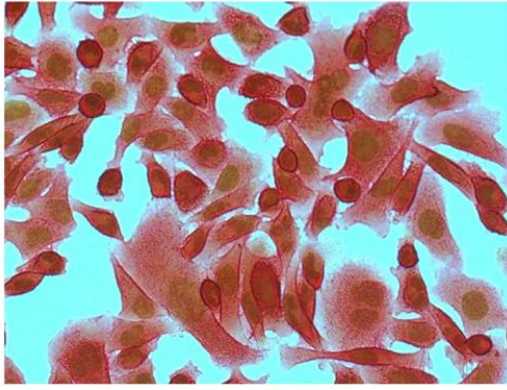
ARG21894 Goat anti-Mouse IgG2b antibody (HRP) (pre-adsorbed) WB image

Western blot: Jurkat whole cell lysate untreated (left) or TSA-treated (400 nM, 12 hours) (right). The blots were stained with anti-Histone H3 acetyl (Lys4) antibody. Secondary antibody: ARG21894 Goat anti-Mouse IgG2b antibody (HRP) (pre-adsorbed).



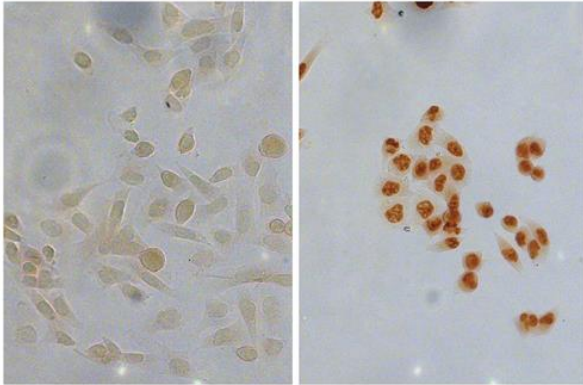
ARG21894 Goat anti-Mouse IgG2b antibody (HRP) (pre-adsorbed) ELISA image

ELISA: The plate was coated with purified Mouse IgG1, IgG2a, IgG2b, IgG3, IgM, and IgA. Immunoglobulins were detected with serially diluted ARG21894 Goat anti-Mouse IgG2b antibody (HRP) (pre-adsorbed).



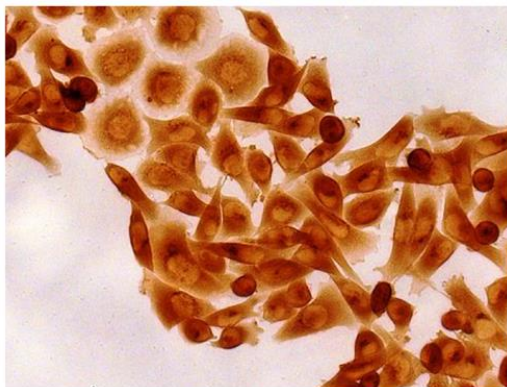
ARG21894 Goat anti-Mouse IgG2b antibody (HRP) (pre-adsorbed)  
ICC image

Immunocytochemistry: Human pancreatic carcinoma cell line MIA PaCa-2 stained with anti-CD44 antibody and anti-Histone H3 acetyl (Lys4) antibody, followed by [ARG23804](#) Goat anti-Mouse IgG2a antibody (AP) (pre-adsorbed) and ARG21894 Goat anti-Mouse IgG2b antibody (HRP) (pre-adsorbed), Red AP, DAB and mounted with Fluoromount-G.



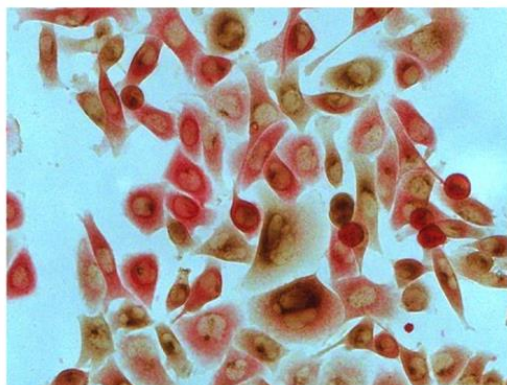
ARG21894 Goat anti-Mouse IgG2b antibody (HRP) (pre-adsorbed)  
ICC image

Immunocytochemistry: Human pancreatic carcinoma cell line MIA PaCa-2 stained with anti-Histone H3 phospho (Thr3) antibody (right), followed by ARG21894 Goat anti-Mouse IgG2b antibody (HRP) (pre-adsorbed), DAB and mounted with Fluoromount-G.



ARG21894 Goat anti-Mouse IgG2b antibody (HRP) (pre-adsorbed)  
ICC image

Immunocytochemistry: Human pancreatic carcinoma cell line MIA PaCa-2 stained with [ARG21506](#) anti-MMP1 antibody [SB12e] followed by ARG21894 Goat anti-Mouse IgG2b antibody (HRP) (pre-adsorbed), DAB and mounted with Fluoromount-G.



ARG21894 Goat anti-Mouse IgG2b antibody (HRP) (pre-adsorbed)  
ICC image

Immunocytochemistry: Human pancreatic carcinoma cell line MIA PaCa-2 stained with [ARG22307](#) anti-Cytokeratin 8 antibody [SB37b] and [ARG21506](#) anti-MMP1 antibody [SB12e], followed by [ARG23804](#) Goat anti-Mouse IgG2a antibody (AP) (pre-adsorbed), ARG21894 Goat anti-Mouse IgG2b antibody (HRP) (pre-adsorbed), Red AP, DAB and mounted with Fluoromount-G.