

## ARG21899 Goat anti-Mouse IgG3 antibody (FITC), pre-adsorbed

Package: 500 µg  
Store at: 4°C

### Summary

Product Description	FITC-conjugated Goat Polyclonal antibody recognizes Mouse IgG3
Tested Reactivity	Ms
Tested Application	FACS, FLISA, ICC/IF, IHC-Fr, IHC-P, WB
Specificity	Reacts with the heavy chain of mouse IgG3
Host	Goat
Clonality	Polyclonal
Isotype	IgG
Target Name	IgG3
Species	Mouse
Conjugation	FITC

### Application Instructions

Pre Adsorbed Mouse IgG1, IgG2a, IgG2b, IgM, and IgA; Human immunoglobulins and pooled sera.

#### Application table

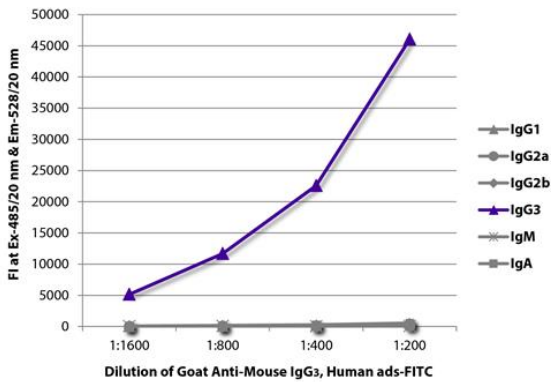
Application	Dilution
FACS	< 1 ug/10 <sup>6</sup> cells
FLISA	1:100 - 1:400
ICC/IF	Assay-dependent
IHC-Fr	Assay-dependent
IHC-P	Assay-dependent
WB	Assay-dependent

Application Note \* The dilutions indicate recommended starting dilutions and the optimal dilutions or concentrations should be determined by the scientist.

### Properties

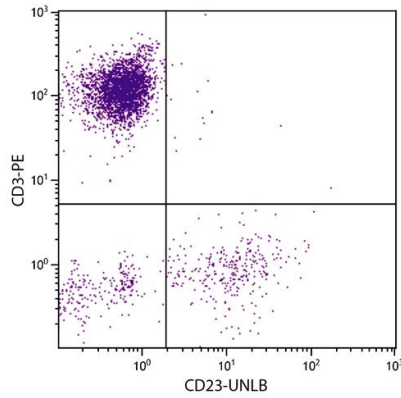
Form	Liquid
Purification	Affinity purification with immunogen.
Buffer	PBS and 0.1% Sodium azide.
Preservative	0.1% Sodium azide
Concentration	1 mg/ml
Storage instruction	Aliquot and store in the dark at 2-8°C. Keep protected from prolonged exposure to light. Avoid repeated freeze/thaw cycles. Suggest spin the vial prior to opening. The antibody solution should be gently mixed before use.

## Images



ARG21899 Goat anti-Mouse IgG3 antibody (FITC) (pre-adsorbed)  
FLISA image

FLISA: The plate was coated with purified Mouse IgG1, IgG2a, IgG2b, IgG3, IgM and IgA. Immunoglobulins were detected with serially diluted ARG21899 Goat anti-Mouse IgG3 antibody (FITC) (pre-adsorbed).



ARG21899 Goat anti-Mouse IgG3 antibody (FITC) (pre-adsorbed)  
FACS image

Flow Cytometry: Human peripheral blood lymphocytes stained with [ARG23889](#) anti-CD23 antibody [Tü1] and Mouse anti-Human CD3 antibody (PE) followed by ARG21899 Goat anti-Mouse IgG3 antibody (FITC) (pre-adsorbed).