

## ARG22056 anti-CD69 antibody [H1.2F3] (PE)

Package: 50 µg  
Store at: 4°C

### Summary

Product Description	PE-conjugated Hamster Monoclonal antibody [H1.2F3] recognizes CD69
Tested Reactivity	Ms
Tested Application	Cell-Act , FACS, IHC-Fr
Specificity	Mouse CD69
Host	Hamster
Clonality	Monoclonal
Clone	H1.2F3
Isotype	IgG1
Target Name	CD69
Species	Mouse
Immunogen	Mouse dendritic epidermal cell line Y245
Conjugation	PE
Alternate Names	GP32/28; Activation inducer molecule; MLR-3; BL-AC/P26; Leukocyte surface antigen Leu-23; AIM; Early activation antigen CD69; Early T-cell activation antigen p60; EA1; CD antigen CD69; CLEC2C; C-type lectin domain family 2 member C

### Application Instructions

Application table	Application	Dilution
	Cell-Act	Assay-dependent
	FACS	< 0.2 µg/10 <sup>6</sup> cells
	IHC-Fr	Assay-dependent
Application Note	* The dilutions indicate recommended starting dilutions and the optimal dilutions or concentrations should be determined by the scientist.	

### Properties

Form	Liquid
Buffer	PBS, 0.1% Sodium azide and Sucrose.
Preservative	0.1% Sodium azide
Stabilizer	Sucrose
Concentration	0.1 mg/ml
Storage instruction	Aliquot and store in the dark at 2-8°C. Keep protected from prolonged exposure to light. Avoid repeated freeze/thaw cycles. Suggest spin the vial prior to opening. The antibody solution should be gently mixed before use.

Note

For laboratory research only, not for drug, diagnostic or other use.

## Bioinformation

Database links

[GeneID: 12515 Mouse](#)

[Swiss-port # P37217 Mouse](#)

Gene Symbol

CD69

Gene Full Name

CD69 antigen

Background

This gene encodes a member of the calcium dependent lectin superfamily of type II transmembrane receptors. Expression of the encoded protein is induced upon activation of T lymphocytes, and may play a role in proliferation. Furthermore, the protein may act to transmit signals in natural killer cells and platelets. [provided by RefSeq, Aug 2011]

Function

Involved in lymphocyte proliferation and functions as a signal transmitting receptor in lymphocytes, natural killer (NK) cells, and platelets. [UniProt]

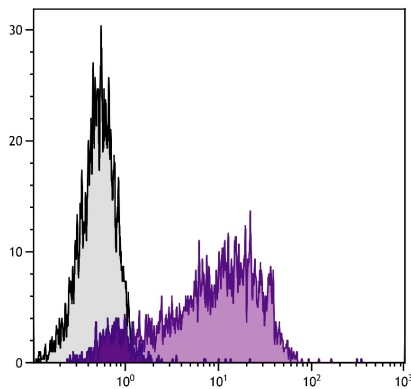
Calculated Mw

23 kDa

PTM

Constitutive Ser/Thr phosphorylation in both mature thymocytes and activated T-lymphocytes.

## Images



ARG22056 anti-CD69 antibody [H1.2F3] (PE) FACS image

Flow Cytometry: PMA and Ionomycin stimulated BALB/c Mouse splenocytes stained with ARG22056 anti-CD69 antibody [H1.2F3] (PE).