

ARG22239 anti-VACHT antibody [S6-38]

Package: 50 µg
Store at: -20°C

Summary

Product Description	Mouse Monoclonal antibody [S6-38] recognizes VACHT
Tested Reactivity	Hu, Ms, Rat
Tested Application	ICC/IF, IHC-P, WB
Specificity	Detects ~56kDa.
Host	Mouse
Clonality	Monoclonal
Clone	S6-38
Isotype	IgG1
Target Name	VACHT
Species	Human
Immunogen	Synthetic peptide around aa. 521-532 of Human VACHT
Conjugation	Un-conjugated
Alternate Names	VACHT; VACHT; Vesicular acetylcholine transporter; Solute carrier family 18 member 3

Application Instructions

Application table	Application	Dilution
	ICC/IF	1:100
	IHC-P	1:200
	WB	1:1000

Application Note * The dilutions indicate recommended starting dilutions and the optimal dilutions or concentrations should be determined by the scientist.

Properties

Form	Liquid
Purification	Purification with Protein G.
Buffer	PBS (pH 7.4), 0.09% Sodium azide and 50% Glycerol
Preservative	0.09% Sodium azide
Stabilizer	50% Glycerol
Concentration	1 mg/ml
Storage instruction	For continuous use, store undiluted antibody at 2-8°C for up to a week. For long-term storage, aliquot and store at -20°C. Storage in frost free freezers is not recommended. Avoid repeated freeze/thaw cycles. Suggest spin the vial prior to opening. The antibody solution should be gently mixed before use.

Note

For laboratory research only, not for drug, diagnostic or other use.

Bioinformation

Database links

[GeneID: 60422 Rat](#)

[GeneID: 6572 Human](#)

[Swiss-port # Q16572 Human](#)

[Swiss-port # Q62666 Rat](#)

Gene Symbol

SLC18A3

Gene Full Name

solute carrier family 18 (vesicular acetylcholine transporter), member 3

Background

This gene is a member of the vesicular amine transporter family. The encoded transmembrane protein transports acetylcholine into secretory vesicles for release into the extracellular space. Acetylcholine transport utilizes a proton gradient established by a vacuolar ATPase. This gene is located within the first intron of the choline acetyltransferase gene. [provided by RefSeq, Jul 2008]

Function

Involved in acetylcholine transport into synaptic vesicles. [UniProt]

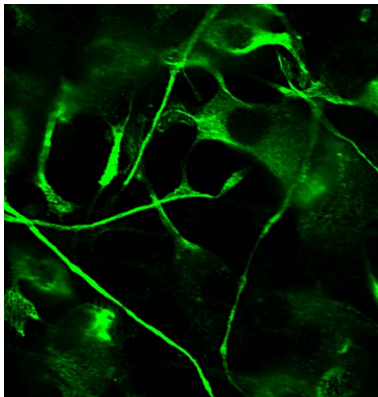
Calculated Mw

57 kDa

Cellular Localization

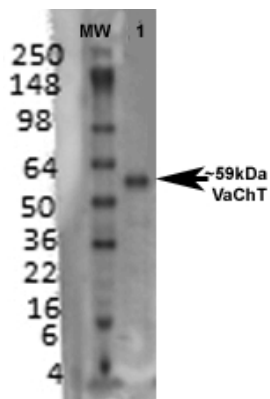
Membrane

Images



ARG22239 anti-VaChT antibody [S6-38] ICC/IF image

Immunofluorescence: SH-SY5Y stained with ARG22239 anti-VaChT antibody [S6-38] at 1:200 dilution.



ARG22239 anti-VaChT antibody [S6-38] WB image

Western blot: Rat brain membrane lysate stained with ARG22239 anti-VaChT antibody [S6-38] at 1:1000 dilution.