

## ARG22420 anti-CD49a / Integrin alpha 1 antibody [TS2/7]

Package: 100 µg

Store at: -20°C

### Summary

Product Description	Mouse Monoclonal antibody [TS2/7] recognizes CD49a / Integrin alpha 1 This antibody recognizes the human alpha 1 integrin sub-unit, which forms the VLA-1 heterodimer in association with the beta 1 integrin. VLA-1 is a receptor for collagen and laminin, and is expressed by chronically activated T cells, melanoma cells and smooth muscle cells.
Tested Reactivity	Hu
Tested Application	CyTOF®-candidate, FACS, IHC-Fr, IP
Host	Mouse
Clonality	Monoclonal
Clone	TS2/7
Isotype	IgG1
Target Name	CD49a / Integrin alpha 1
Species	Human
Immunogen	Human CTL line directed against HLA-DR.
Conjugation	Un-conjugated
Alternate Names	VLA-1; CD49a; Integrin alpha-1; Laminin and collagen receptor; VLA1; CD antigen CD49a; CD49 antigen-like family member A

### Application Instructions

Application table	Application	Dilution
	CyTOF®-candidate	Assay-dependent
	FACS	Neat - 1:10
	IHC-Fr	Assay-dependent
	IP	Assay-dependent
Application Note	FACS: Use 10ul of the suggested working dilution to label 10 <sup>6</sup> cells in 100ul. * The dilutions indicate recommended starting dilutions and the optimal dilutions or concentrations should be determined by the scientist.	

### Properties

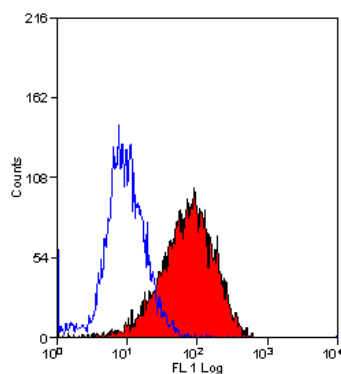
Form	Liquid
Purification	Purification with Protein G.
Buffer	PBS and 0.09% Sodium azide
Preservative	0.09% Sodium azide
Concentration	1 mg/ml

Storage instruction	For continuous use, store undiluted antibody at 2-8°C for up to a week. For long-term storage, aliquot and store at -20°C or below. Storage in frost free freezers is not recommended. Avoid repeated freeze/thaw cycles. Suggest spin the vial prior to opening. The antibody solution should be gently mixed before use.
Note	For laboratory research only, not for drug, diagnostic or other use.

## Bioinformation

Gene Symbol	ITGA1
Gene Full Name	integrin, alpha 1
Background	This gene encodes the alpha 1 subunit of integrin receptors. This protein heterodimerizes with the beta 1 subunit to form a cell-surface receptor for collagen and laminin. The heterodimeric receptor is involved in cell-cell adhesion and may play a role in inflammation and fibrosis. The alpha 1 subunit contains an inserted (I) von Willebrand factor type I domain which is thought to be involved in collagen binding. [provided by RefSeq, Jul 2008]
Function	Integrin alpha-1/beta-1 is a receptor for laminin and collagen. It recognizes the proline-hydroxylated sequence G-F-P-G-E-R in collagen. Involved in anchorage-dependent, negative regulation of EGF-stimulated cell growth. [UniProt]
Highlight	Related products: <a href="#">CD49a antibodies</a> ; <a href="#">Anti-Mouse IgG secondary antibodies</a> ; Related news: <a href="#">CyTOF-candidate Antibodies</a>
Calculated Mw	131 kDa

## Images



ARG22420 anti-CD49a / Integrin alpha 1 antibody [TS2/7] FACS image

Flow Cytometry: HeLa cells stained with ARG22420 anti-CD49a / Integrin alpha 1 antibody [TS2/7].