

ARG22651 anti-CD21 antibody [CA2.1D6]

Package: 50 µg

Store at: -20°C

Summary

Product Description	<p>Mouse Monoclonal antibody [CA2.1D6] recognizes CD21</p> <p>This antibody recognizes Canine CD21, also known as Complement receptor type 2. CD21 is a cell surface antigen expressed by Canine B lymphocytes.</p> <p>The antigen recognised may be the Canine homologue of Human CD21, but this has not been fully confirmed.</p> <p>Mouse anti Canine CD21 antibody , clone CA2.1D6 also recognizes the CD21 antigen in Felids.</p> <p>Expression in cats is analogous to that seen in dogs with strong expression on lymphocytes, in a manner mutually exclusive with expression of CD4 or CD8. Clone CA2.1D6 also immunoprecipitates a 145kDa protein from feline lymphocytes, similar to the protein immunoprecipitated by the antibody from Canine lymphocytes (Dean et al. 1996).</p>
Tested Reactivity	Cat, Dog, Hrs
Tested Application	FACS, IHC-Fr, IP
Host	Mouse
Clonality	Monoclonal
Clone	CA2.1D6
Isotype	IgG1
Target Name	CD21
Species	Dog
Conjugation	Un-conjugated
Alternate Names	Cr2; Complement C3d receptor; C3DR; CD21; CD antigen CD21; Complement receptor type 2; SLEB9; CR; CVID7; Epstein-Barr virus receptor; EBV receptor

Application Instructions

Application table	Application	Dilution
	FACS	1:100
	IHC-Fr	Assay-dependent
	IP	Assay-dependent
Application Note	<p>FACS: Use 10 µl of the suggested working dilution to label 10⁶ cells or 100 µl whole blood.</p> <p>* The dilutions indicate recommended starting dilutions and the optimal dilutions or concentrations should be determined by the scientist.</p>	

Properties

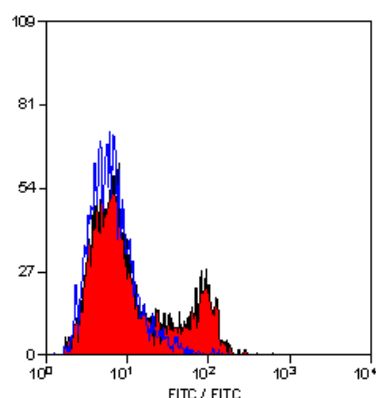
Form	Liquid
Purification	Purification with Protein A.
Buffer	PBS and 0.09% Sodium azide.

Preservative	0.09% Sodium azide
Concentration	1 mg/ml
Storage instruction	For continuous use, store undiluted antibody at 2-8°C for up to a week. For long-term storage, aliquot and store at -20°C or below. Storage in frost free freezers is not recommended. Avoid repeated freeze/thaw cycles. Suggest spin the vial prior to opening. The antibody solution should be gently mixed before use.
Note	For laboratory research only, not for drug, diagnostic or other use.

Bioinformation

Gene Symbol	CR2
Gene Full Name	complement component (3d/Epstein Barr virus) receptor 2
Background	This gene encodes a membrane protein, which functions as a receptor for Epstein-Barr virus (EBV) binding on B and T lymphocytes. Genetic variations in this gene are associated with susceptibility to systemic lupus erythematosus type 9 (SLEB9). Alternatively spliced transcript variants encoding different isoforms have been found for this gene.[provided by RefSeq, Sep 2009]
Function	Receptor for complement C3Dd, for the Epstein-Barr virus on human B-cells and T-cells and for HNRPU. Participates in B lymphocytes activation. [UniProt]
Calculated Mw	113 kDa

Images



ARG22651 anti-CD21 antibody [CA2.1D6] FACS image

Flow Cytometry: Canine peripheral blood lymphocytes stained with ARG22651 anti-CD21 antibody [CA2.1D6].