

ARG22661 anti-CD301 antibody [ER-MP23]

Package: 100 µg
Store at: -20°C

Summary

Product Description	Rat Monoclonal antibody [ER-MP23] recognizes CD301 This antibody recognizes murine CD301, a ~38 kDa cell surface protein, otherwise known as macrophage galactose N-acetylgalactosamine lectin (MGL) or dendritic cell asialoglycoprotein (DC-ASGPR).
Tested Reactivity	Ms
Tested Application	FACS, ICC/IF, IHC-Fr, IHC-P
Host	Rat
Clonality	Monoclonal
Clone	ER-MP23
Isotype	IgG2a
Target Name	CD301
Species	Mouse
Immunogen	Balb/c macrophage precursor cell hybrids.
Conjugation	Un-conjugated
Alternate Names	CD301; CD antigen CD301; Macrophage lectin 2; C-type lectin superfamily member 14; HML2; HML; CLECSF14; CLECSF13; C-type lectin domain family 10 member A; MGL

Application Instructions

Application table	Application	Dilution
	FACS	1:100 - 1:200
	ICC/IF	Assay-dependent
	IHC-Fr	Assay-dependent
	IHC-P	Assay-dependent
Application Note	FACS: Use 10 µl of the suggested working dilution to label 10 ⁶ cells in 100 µl. IHC-P: Antigen Retrieval: Boil tissue section in Citrate buffer (pH 6.0) * The dilutions indicate recommended starting dilutions and the optimal dilutions or concentrations should be determined by the scientist.	

Properties

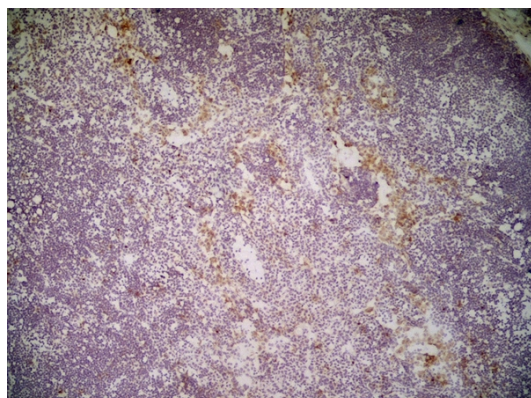
Form	Liquid
Purification	Purification with Protein G.
Buffer	PBS and 0.09% Sodium azide.
Preservative	0.09% Sodium azide

Concentration	1 mg/ml
Storage instruction	For continuous use, store undiluted antibody at 2-8°C for up to a week. For long-term storage, aliquot and store at -20°C or below. Storage in frost free freezers is not recommended. Avoid repeated freeze/thaw cycles. Suggest spin the vial prior to opening. The antibody solution should be gently mixed before use.
Note	For laboratory research only, not for drug, diagnostic or other use.

Bioinformation

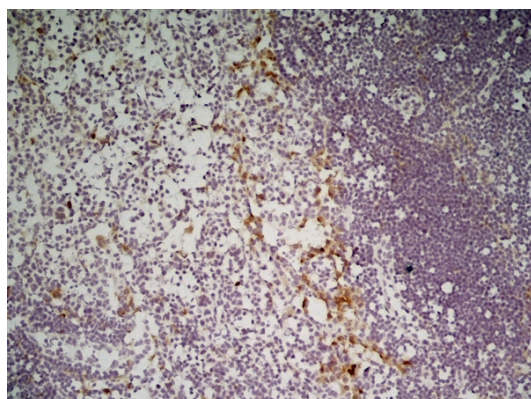
Gene Symbol	Clec10a
Gene Full Name	C-type lectin domain family 10, member A
Background	This gene encodes a member of the C-type lectin/C-type lectin-like domain (CTL/CTLD) superfamily. Members of this family share a common protein fold and have diverse functions, such as cell adhesion, cell-cell signalling, glycoprotein turnover, and roles in inflammation and immune response. The encoded type 2 transmembrane protein may function as a cell surface antigen. Two transcript variants encoding distinct isoforms have been identified for this gene. [provided by RefSeq, Jul 2008]
Function	Probable role in regulating adaptive and innate immune responses. Binds in a calcium-dependent manner to terminal galactose and N-acetylgalactosamine units, linked to serine or threonine. These sugar moieties are known as Tn-Ag and are expressed in a variety of carcinoma cells. [UniProt]
Calculated Mw	35 kDa

Images



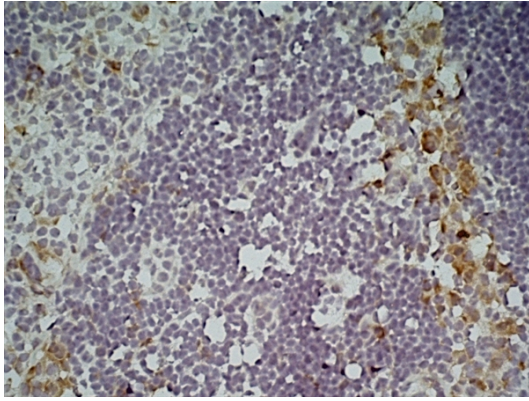
ARG22661 anti-CD301 antibody [ER-MP23] IHC-P image

Immunohistochemistry: Immunoperoxidase staining of a Mouse lymph node stained with ARG22661 anti-CD301 antibody [ER-MP23]. (Low power).



ARG22661 anti-CD301 antibody [ER-MP23] IHC-P image

Immunohistochemistry: Immunoperoxidase staining of a Mouse lymph node stained with ARG22661 anti-CD301 antibody [ER-MP23]. (Medium power).



ARG22661 anti-CD301 antibody [ER-MP23] IHC-P image

Immunohistochemistry: Immunoperoxidase staining of a Mouse lymph node stained with ARG22661 anti-CD301 antibody [ER-MP23]. (High power).