

## ARG22877 anti-C4d / Complement 4d antibody [10-11]

Package: 50 µg  
Store at: -20°C

### Summary

Product Description	Mouse Monoclonal antibody [10-11] recognizes C4d / Complement 4d
Tested Reactivity	Hu
Species Does Not React With	Ms, Rat, Bov, Cat, Dog, Gpig, Rb, Sheep
Tested Application	ELISA, ICC/IF, IHC-Fr, IHC-P, WB
Host	Mouse
Clonality	Monoclonal
Clone	10-11
Isotype	IgG1
Target Name	C4d / Complement 4d
Species	Human
Immunogen	Native, from Human plasma
Conjugation	Un-conjugated
Alternate Names	CH; C4F; CO4; C4B1; C4B2; C4B3; C4B5; C4BD; C4B12; C4B_2; CPAMD3

### Application Instructions

Application table	Application	Dilution
	ELISA	1:5000 - 1:20000
	ICC/IF	1:250 - 1:600
	IHC-Fr	1:100 - 1:750
	IHC-P	Assay-dependent
	WB	Assay-dependent

Application Note	<p>IHC: It has been reported that this antibody works very well on acetone-fixed, frozen renal biopsies. Strong staining is observed in the glomeruli and in some cases the peritubular capillaries. Clone 10-11 has given variable results on formalin-fixed, paraffin-embedded sections. It has been observed that pre-treatment with 88% formic acid for 20 minutes at room temperature is beneficial. Antigen Retrieval: Heat mediated.</p> <p>* The dilutions indicate recommended starting dilutions and the optimal dilutions or concentrations should be determined by the scientist.</p>
------------------	---

### Properties

Form	Liquid
Purification	Purification with Protein A.
Buffer	BBS and 0.09% Sodium azide

Preservative	0.09% Sodium azide
Concentration	1 mg/ml
Storage instruction	For continuous use, store undiluted antibody at 2-8°C for up to a week. For long-term storage, aliquot and store at -20°C or below. Storage in frost free freezers is not recommended. Avoid repeated freeze/thaw cycles. Suggest spin the vial prior to opening. The antibody solution should be gently mixed before use.
Note	For laboratory research only, not for drug, diagnostic or other use.

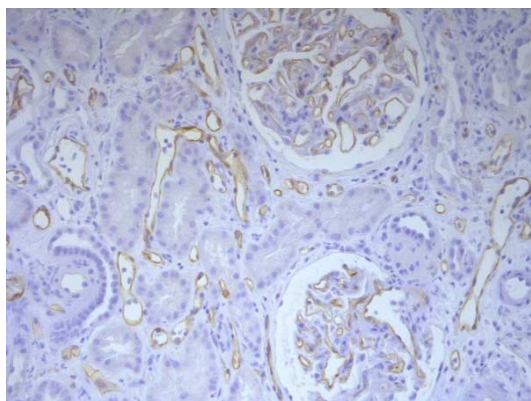
## Bioinformation

---

Gene Symbol	C4B
Gene Full Name	complement C4B (Chido blood group)
Background	This gene encodes the basic form of complement factor 4, part of the classical activation pathway. The protein is expressed as a single chain precursor which is proteolytically cleaved into a trimer of alpha, beta, and gamma chains prior to secretion. The trimer provides a surface for interaction between the antigen-antibody complex and other complement components. The alpha chain may be cleaved to release C4 anaphylatoxin, a mediator of local inflammation. Deficiency of this protein is associated with systemic lupus erythematosus. This gene localizes to the major histocompatibility complex (MHC) class III region on chromosome 6. Varying haplotypes of this gene cluster exist, such that individuals may have 1, 2, or 3 copies of this gene. In addition, this gene exists as a long form and a short form due to the presence or absence of a 6.4 kb endogenous HERV-K retrovirus in intron 9. [provided by RefSeq, Jul 2008]
Function	Non-enzymatic component of the C3 and C5 convertases and thus essential for the propagation of the classical complement pathway. Covalently binds to immunoglobulins and immune complexes and enhances the solubilization of immune aggregates and the clearance of IC through CR1 on erythrocytes. C4A isotype is responsible for effective binding to form amide bonds with immune aggregates or protein antigens, while C4B isotype catalyzes the transacylation of the thioester carbonyl group to form ester bonds with carbohydrate antigens. [UniProt]
Calculated Mw	193 kDa

## Images

---



ARG22877 anti-C4d / Complement 4d antibody [10-11] IHC-P image

Immunohistochemistry: Formalin-fixed and paraffin-embedded Human renal allograft tissue stained with ARG22877 anti-C4d / Complement 4d antibody [10-11]. Antigen Retrieval: Heat mediated.