

ARG23397 anti-CD5 antibody [YKIX322.3] (PE)

Package: 50 tests

Store at: 4°C

Summary

Product Description	PE-conjugated Rat Monoclonal antibody [YKIX322.3] recognizes CD5 Rat anti Dog CD5 antibody, clone YKIX322.3 recognizes canine CD5, a 67 kDa cell surface type 1 transmembrane glycoprotein also known as lymphocyte antigen T1, Ly-1 or Leu-1. CD5 is expressed on the surface of T-cells and thymocytes, CD5 is also expressed by NK cells at low levels (Huang et al. 2008). Rat anti dog CD5, clone YKIX322.3 was clustered as canine CD5 in the First Canine Leucocyte Antigen Workshop (Cobbold et al. 1994). In a study of 73 cases of canine chronic lymphocytic leukemia (CLL) CD5 expression was absent on all cases of B-cell CLL as defined by CD21 expression and lack of CD3 or other T cell antigen expression (Vernau and Moore 1999). Rat anti dog CD5 serves as a useful marker for the discrimination of canine leukemias of differing origins (Villiers 2002).
Tested Reactivity	Dog
Tested Application	FACS
Host	Rat
Clonality	Monoclonal
Clone	YKIX322.3
Isotype	IgG2a
Target Name	CD5
Species	Dog
Immunogen	Concanavilin A activated canine peripheral blood cells
Conjugation	PE
Alternate Names	CD antigen CD5; Lymphocyte antigen T1/Leu-1; LEU1; T-cell surface glycoprotein CD5; T1

Application Instructions

Application table	<table><thead><tr><th>Application</th><th>Dilution</th></tr></thead><tbody><tr><td>FACS</td><td>Neat</td></tr></tbody></table>	Application	Dilution	FACS	Neat
Application	Dilution				
FACS	Neat				
Application Note	FACS: Use 10 µl of the suggested working dilution to label 10 ⁶ cells in 100 µl. * The dilutions indicate recommended starting dilutions and the optimal dilutions or concentrations should be determined by the scientist.				

Properties

Form	Liquid
Purification	Purification with Protein G.
Buffer	PBS, 0.09% Sodium azide, 1% BSA and 5% Sucrose.
Preservative	0.09% Sodium azide
Stabilizer	1% BSA and 5% Sucrose

Storage instruction

Aliquot and store in the dark at 2-8°C. Keep protected from prolonged exposure to light. Avoid repeated freeze/thaw cycles. Suggest spin the vial prior to opening. The antibody solution should be gently mixed before use.

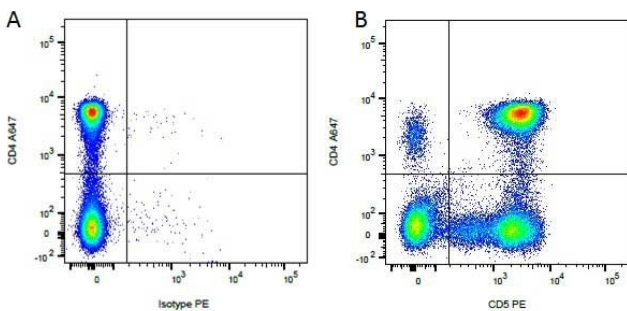
Note

For laboratory research only, not for drug, diagnostic or other use.

Bioinformation

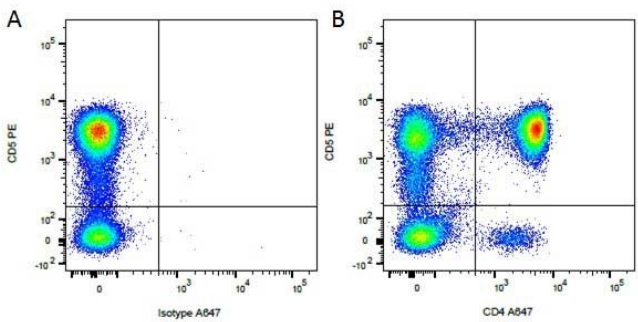
Gene Symbol	CD5
Gene Full Name	CD5 molecule
Function	May act as a receptor in regulating T-cell proliferation. [UniProt]
Calculated Mw	55 kDa
PTM	Phosphorylated on tyrosine residues by LYN; this creates binding sites for PTPN6/SHP-1. [UniProt]

Images



ARG23397 anti-CD5 antibody [YKIX322.3] (PE) FACS image

Flow Cytometry: Figure A. A647 conjugated Rat anti Canine CD4 and PE-conjugated Rat IgG2a isotype control. Figure B. A647 conjugated Rat anti Canine CD4 and ARG23397 anti-CD5 antibody [YKIX322.3] (PE). All experiments performed on red cell lysed Canine blood gated on mononuclear cells.



ARG23397 anti-CD5 antibody [YKIX322.3] (PE) FACS image

Flow Cytometry: Figure A. ARG23397 anti-CD5 antibody [YKIX322.3] (PE) and A647 conjugated Rat IgG2a isotype control. Figure B. ARG23397 anti-CD5 antibody [YKIX322.3] (PE) and A647 conjugated Rat anti Canine CD4. All experiments performed on red cell lysed Canine blood gated on mononuclear cells.