

ARG23487 Goat anti-Mouse IgG antibody (Biotin), pre-adsorbed

Package: 500 µg
Store at: 4°C

Summary

Product Description	Biotin-conjugated Goat Polyclonal antibody recognizes Mouse IgG
Tested Reactivity	Ms
Tested Application	ELISA, ELISPOT, FACS, FLISA, ICC/IF, IHC-Fr, IHC-P, WB
Specificity	Reacts with the heavy chains of mouse IgG1, IgG2a, IgG2b, IgG2c, and IgG3.
Host	Goat
Clonality	Polyclonal
Isotype	IgG
Target Name	IgG
Species	Mouse
Immunogen	Mouse IgG
Target Ig	IgG
Conjugation	Biotin

Application Instructions

Pre Adsorbed Mouse IgM and IgA; Human immunoglobulins and pooled sera.

Application table

Application	Dilution
ELISA	1:5000 - 1:20000
ELISPOT	Assay-dependent
FACS	< 1 µg/10 ⁶ cells
FLISA	Assay-dependent
ICC/IF	Assay-dependent
IHC-Fr	1:100 - 1:500
IHC-P	1:250 - 1:1500
WB	Assay-dependent

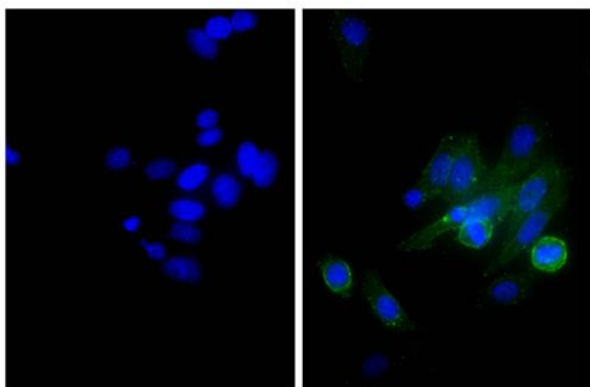
Application Note * The dilutions indicate recommended starting dilutions and the optimal dilutions or concentrations should be determined by the scientist.

Properties

Form	Liquid
Purification	Affinity purification with immunogen.
Buffer	PBS and 0.1% Sodium azide.

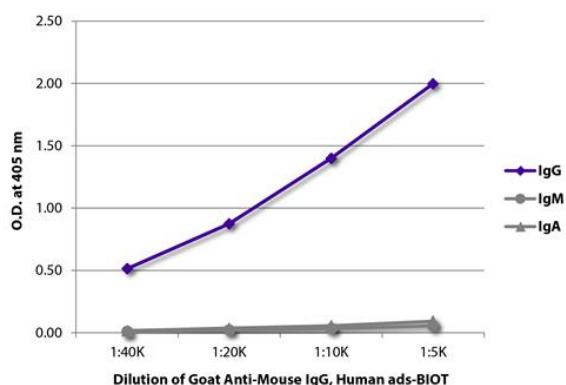
Preservative	0.1% Sodium azide
Concentration	0.5 mg/ml
Storage instruction	Aliquot and store in the dark at 2-8°C. Keep protected from prolonged exposure to light. Avoid repeated freeze/thaw cycles. Suggest spin the vial prior to opening. The antibody solution should be gently mixed before use.
Note	For laboratory research only, not for drug, diagnostic or other use.

Images



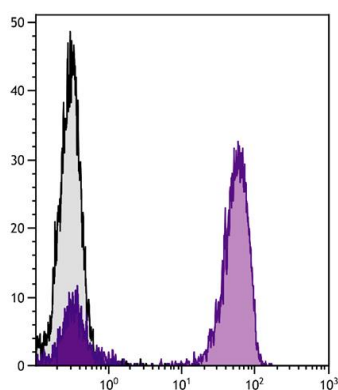
ARG23487 Goat anti-Mouse IgG antibody (Biotin) (pre-adsorbed) ICC/IF image

Immunofluorescence: Human epithelial carcinoma cell line HEp-2 stained with anti-Human CD44 antibody (right), followed by ARG23487 Goat anti-Mouse IgG antibody (Biotin) (pre-adsorbed), Streptavidin (FITC) and DAPI.



ARG23487 Goat anti-Mouse IgG antibody (Biotin) (pre-adsorbed) ELISA image

ELISA: The plate was coated with purified Mouse IgG, IgM, and IgA. Immunoglobulins were detected with serially diluted ARG23487 Goat anti-Mouse IgG antibody (Biotin) (pre-adsorbed) followed by [ARG23912](#) Streptavidin (HRP).



ARG23487 Goat anti-Mouse IgG antibody (Biotin) (pre-adsorbed) FACS image

Flow Cytometry: Human peripheral blood lymphocytes stained with Mouse anti-Human CD3 antibody followed by ARG23487 Goat anti-Mouse IgG antibody (Biotin) (pre-adsorbed) followed by Streptavidin (FITC).