

## ARG23537 anti-CD80 antibody [IL-A159] (PE)

Package: 50 tests

Store at: 4°C

### Summary

Product Description	PE-conjugated Mouse Monoclonal antibody [IL-A159] recognizes CD80. Mouse anti Bovine CD80 antibody, clone IL-A159 recognizes the bovine CD80 cell surface antigen, expressed by dendritic cells, activated macrophages and activated B cells. CD80 plays a key role in co-stimulation of T cells during the primary immune response.
Tested Reactivity	Bov, Sheep
Tested Application	FACS
Host	Mouse
Clonality	Monoclonal
Clone	IL-A159
Isotype	IgG1
Target Name	CD80
Species	Bovine
Conjugation	PE
Alternate Names	B7.1; CTLA-4 counter-receptor B7.1; CD28LG; T-lymphocyte activation antigen CD80; B7-1; CD28LG1; B7; LAB7; Activation B7-1 antigen; CD antigen CD80; BB1

### Application Instructions

Application table	Application	Dilution
	FACS	Neat

**Application Note** FACS: Use 10 µl of the suggested working dilution to label 10<sup>6</sup> cells in 100 µl.  
\* The dilutions indicate recommended starting dilutions and the optimal dilutions or concentrations should be determined by the scientist.

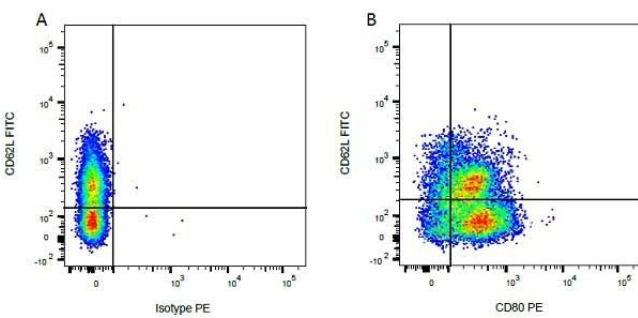
### Properties

Form	Liquid
Purification	Purification with Protein G.
Buffer	PBS, 0.09% Sodium azide, 1% BSA and 5% Sucrose.
Preservative	0.09% Sodium azide
Stabilizer	1% BSA and 5% Sucrose
Storage instruction	Aliquot and store in the dark at 2-8°C. Keep protected from prolonged exposure to light. Avoid repeated freeze/thaw cycles. Suggest spin the vial prior to opening. The antibody solution should be gently mixed before use.
Note	For laboratory research only, not for drug, diagnostic or other use.

## Bioinformatics

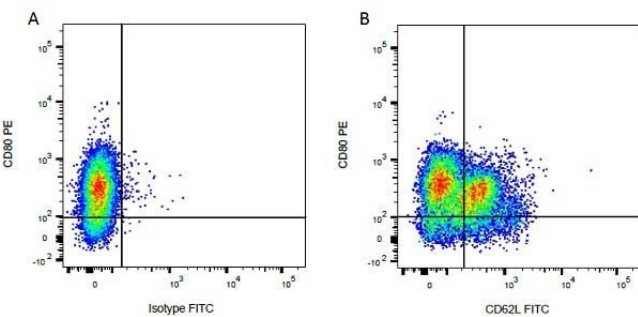
Gene Symbol	CD80
Gene Full Name	CD80 molecule
Background	The protein encoded by this gene is a membrane receptor that is activated by the binding of CD28 or CTLA-4. The activated protein induces T-cell proliferation and cytokine production. This protein can act as a receptor for adenovirus subgroup B and may play a role in lupus neuropathy. [provided by RefSeq, Aug 2011]
Function	Involved in the costimulatory signal essential for T-lymphocyte activation. T-cell proliferation and cytokine production is induced by the binding of CD28, binding to CTLA-4 has opposite effects and inhibits T-cell activation. [UniProt]
Calculated Mw	33 kDa

## Images



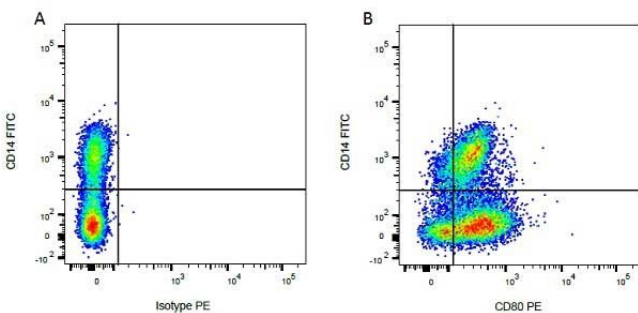
ARG23537 anti-CD80 antibody [IL-A159] (PE) FACS image

Flow Cytometry: Figure A. FITC conjugated Mouse anti Bovine CD62L and PE-conjugated Mouse IgG1 isotype control. Figure B. FITC conjugated Mouse anti Bovine CD62L and ARG23537 anti-CD80 antibody [IL-A159] (PE). All experiments performed on red cell lysed Bovine blood gated on mononuclear cells.



ARG23537 anti-CD80 antibody [IL-A159] (PE) FACS image

Flow Cytometry: Figure A. ARG23537 anti-CD80 antibody [IL-A159] (PE) and FITC conjugated Mouse IgG1 isotype control. Figure B. ARG23537 anti-CD80 antibody [IL-A159] (PE) and FITC conjugated Mouse anti Bovine CD62L. All experiments performed on red cell lysed Bovine blood gated on mononuclear cells.



ARG23537 anti-CD80 antibody [IL-A159] (PE) FACS image

Flow Cytometry: Figure A. FITC conjugated Mouse anti Bovine CD14 and PE-conjugated Mouse IgG1 isotype control. Figure B. FITC conjugated Mouse anti Bovine CD14 and ARG23537 anti-CD80 antibody [IL-A159] (PE). All experiments performed on red cell lysed Bovine blood gated on mononuclear cells.