

## ARG23712 Rabbit anti-Mouse IgG (H+L) (HRP)

Package: 500 µl  
Store at: 4°C

### Summary

Product Description	HRP-conjugated Rabbit Polyclonal antibody recognizes Mouse IgG (H+L)
Tested Reactivity	Ms
Tested Application	ELISA, ELISPOT, FLISA, IHC-Fr, WB
Specificity	Reacts with the heavy and light chains of Mouse IgG and the light chains of Mouse IgM and IgA.
Host	Rabbit
Clonality	Polyclonal
Isotype	IgG
Target Name	IgG (H+L)
Species	Mouse
Immunogen	Mouse IgG.
Conjugation	HRP

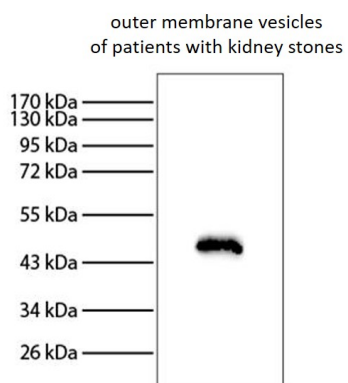
### Application Instructions

Application table	Application	Dilution
	ELISA	1:4000 - 1:8000
	ELISPOT	Assay-dependent
	FLISA	Assay-dependent
	IHC-Fr	Assay-dependent
	WB	Assay-dependent

**Application Note** \* The dilutions indicate recommended starting dilutions and the optimal dilutions or concentrations should be determined by the scientist.

### Properties

Form	Liquid
Purification	Affinity purification with immunogen.
Buffer	PBS (pH 7.4) and 50% Glycerol.
Stabilizer	50% Glycerol
Storage instruction	Aliquot and store in the dark at 2-8°C. Keep protected from prolonged exposure to light. Avoid repeated freeze/thaw cycles. Suggest spin the vial prior to opening. The antibody solution should be gently mixed before use.
Note	For laboratory research only, not for drug, diagnostic or other use.



ARG23712 Rabbit anti-Mouse IgG (H+L) (HRP) WB image

Western blot: Proteins derived from outer membrane vesicles of patients with kidney stones were stained with anti-EF-Tu antibody followed by ARG23712 Rabbit anti-Mouse IgG (H+L) (HRP).