

ARG23735 Goat anti-Mouse IgG (H+L) antibody (FITC), pre-adsorbed

Package: 500 µg
Store at: 4°C

Summary

Product Description	FITC-conjugated Goat Polyclonal antibody recognizes Mouse IgG (H+L)
Tested Reactivity	Ms
Tested Application	ELISA, FLISA, ICC/IF
Specificity	Reacts with the heavy and light chains of mouse IgG1, IgG2a, IgG2b, IgG2c, and IgG3 and with the light chains of mouse IgM and IgA.
Host	Goat
Clonality	Polyclonal
Isotype	IgG
Target Name	IgG (H+L)
Species	Mouse
Immunogen	Mouse IgG
Conjugation	FITC

Application Instructions

Pre Adsorbed Human, Rat, Hamster, Goat, Sheep, Rabbit, Chicken, Guinea pig, Horse, and Bovine serum proteins.

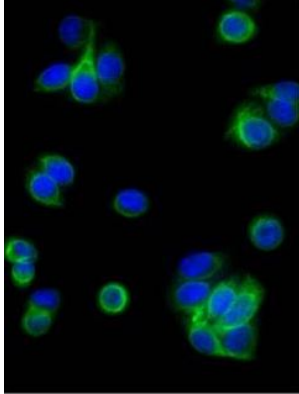
Application table

Application	Dilution
ELISA	Assay-dependent
FLISA	1:100 - 1:400
ICC/IF	Assay-dependent

Application Note * The dilutions indicate recommended starting dilutions and the optimal dilutions or concentrations should be determined by the scientist.

Properties

Form	Liquid
Purification	Affinity purification with immunogen.
Buffer	PBS and 0.1% Sodium azide.
Preservative	0.1% Sodium azide
Concentration	1 mg/ml
Storage instruction	Aliquot and store in the dark at 2-8°C. Keep protected from prolonged exposure to light. Avoid repeated freeze/thaw cycles. Suggest spin the vial prior to opening. The antibody solution should be gently mixed before use.
Note	For laboratory research only, not for drug, diagnostic or other use.



ARG23735 Goat anti-Mouse IgG (H+L) antibody (FITC), pre-adsorbed
ICC/IF image

Immunofluorescence: Human pancreatic carcinoma cell line MIA
PaCa-2 was stained with anti-Cytokeratin 18 antibody followed by
ARG23735 Goat anti-Mouse IgG (H+L) antibody (FITC), pre-adsorbed
and DAPI.