

ARG23770 Goat anti-Rat IgG (H+L) antibody (Biotin), pre-adsorbed

Package: 500 µg
Store at: 4°C

Summary

Product Description	Biotin-conjugated Goat Polyclonal antibody recognizes Rat IgG (H+L)
Tested Reactivity	Rat
Tested Application	ELISA, FACS, FLISA, ICC/IF, IHC-Fr, IHC-P, WB
Specificity	Reacts with the heavy and light chains of rat IgG and with the light chains of rat IgM as demonstrated by ELISA, FLISA, and/or flow cytometry; minimal cross reactivity with mouse immunoglobulins
Host	Goat
Clonality	Polyclonal
Isotype	IgG
Target Name	IgG (H+L)
Species	Rat
Conjugation	Biotin

Application Instructions

Pre Adsorbed	Mouse immunoglobulins and pooled sera.																
Application table	<table><thead><tr><th>Application</th><th>Dilution</th></tr></thead><tbody><tr><td>ELISA</td><td>1:5000 - 1:20000</td></tr><tr><td>FACS</td><td>< 1 µg/10⁶ cells</td></tr><tr><td>FLISA</td><td>Assay-dependent</td></tr><tr><td>ICC/IF</td><td>Assay-dependent</td></tr><tr><td>IHC-Fr</td><td>Assay-dependent</td></tr><tr><td>IHC-P</td><td>Assay-dependent</td></tr><tr><td>WB</td><td>Assay-dependent</td></tr></tbody></table>	Application	Dilution	ELISA	1:5000 - 1:20000	FACS	< 1 µg/10 ⁶ cells	FLISA	Assay-dependent	ICC/IF	Assay-dependent	IHC-Fr	Assay-dependent	IHC-P	Assay-dependent	WB	Assay-dependent
Application	Dilution																
ELISA	1:5000 - 1:20000																
FACS	< 1 µg/10 ⁶ cells																
FLISA	Assay-dependent																
ICC/IF	Assay-dependent																
IHC-Fr	Assay-dependent																
IHC-P	Assay-dependent																
WB	Assay-dependent																
Application Note	* The dilutions indicate recommended starting dilutions and the optimal dilutions or concentrations should be determined by the scientist.																

Properties

Form	Liquid
Purification	Affinity purification with immunogen.
Buffer	PBS and 0.1% Sodium azide.
Preservative	0.1% Sodium azide
Concentration	0.5 mg/ml

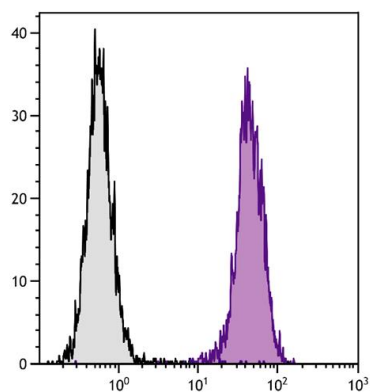
Storage instruction

Aliquot and store in the dark at 2-8°C. Keep protected from prolonged exposure to light. Avoid repeated freeze/thaw cycles. Suggest spin the vial prior to opening. The antibody solution should be gently mixed before use.

Note

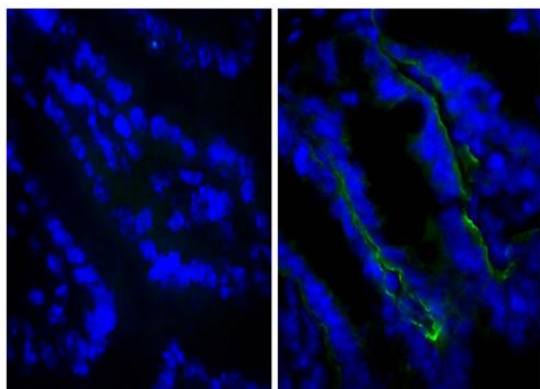
For laboratory research only, not for drug, diagnostic or other use.

Images



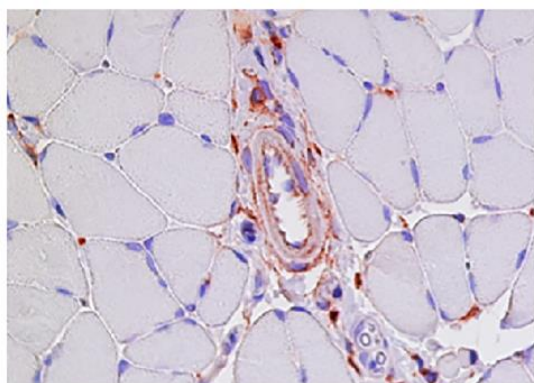
ARG23770 Goat anti-Rat IgG (H+L) antibody (Biotin), pre-adsorbed FACS image

Flow Cytometry: C57BL/6 Mouse splenocytes were stained with ARG20565 anti-CD45 antibody [I3/2.3] followed by ARG23770 Goat anti-Rat IgG (H+L) antibody (Biotin), pre-adsorbed followed by Streptavidin-FITC.



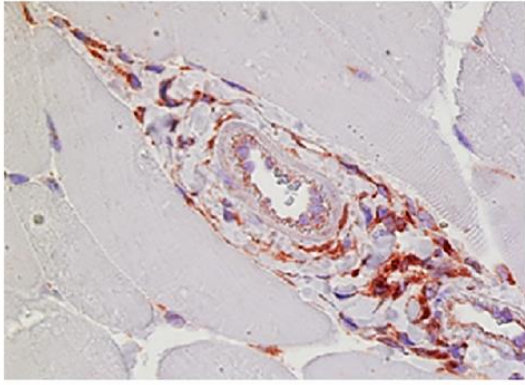
ARG23770 Goat anti-Rat IgG (H+L) antibody (Biotin), pre-adsorbed IHC-Fr image

Immunohistochemistry: Frozen section of BALB/c Mouse intestine was stained with ARG21041 anti-Integrin beta 4 antibody [346-11A] (right) followed by ARG23770 Goat anti-Rat IgG (H+L) antibody (Biotin), pre-adsorbed, and Streptavidin-FITC.



ARG23770 Goat anti-Rat IgG (H+L) antibody (Biotin), pre-adsorbed IHC-P image

Immunohistochemistry: Paraffin-embedded Mouse adductor muscle day 3 post femoral artery ligation was stained with ARG23770 Goat anti-Rat IgG (H+L) antibody (Biotin), pre-adsorbed and then Streptavidin-HRP, hematoxylin, and AEC.



ARG23770 Goat anti-Rat IgG (H+L) antibody (Biotin), pre-adsorbed IHC-P image

Immunohistochemistry: Paraffin-embedded Mouse adductor muscle day 7 post femoral artery ligation was stained with anti-Mac-3 followed by [ARG23770](#) Goat anti-Rat IgG (H+L) antibody (Biotin) (pre-adsorbed) and then [ARG23912](#) Streptavidin (HRP), hematoxylin, and AEC.