

ARG23777 Goat anti-Mouse IgA + IgG + IgM antibody (TRITC), pre-adsorbed

Package: 500 µg
Store at: 4°C

Summary

Product Description	TRITC-conjugated Goat Polyclonal antibody recognizes Mouse IgA + IgG + IgM
Tested Reactivity	Ms
Tested Application	ELISA, FACS, FLISA, ICC/IF, IHC-Fr, IHC-P, WB
Specificity	Reacts with the heavy and light chains of mouse IgM, IgG1, IgG2a, IgG2b, IgG3 and IgA as demonstrated by ELISA, FLISA, and/or flow cytometry; minimal cross reactivity with human immunoglobulins
Host	Goat
Clonality	Polyclonal
Isotype	IgG
Target Name	IgA + IgG + IgM
Species	Mouse
Conjugation	TRITC

Application Instructions

Pre Adsorbed	Human immunoglobulins and pooled sera.																	
Application table	<table><thead><tr><th>Application</th><th>Dilution</th></tr></thead><tbody><tr><td>ELISA</td><td>Assay-dependent</td></tr><tr><td>FACS</td><td>Assay-dependent</td></tr><tr><td>FLISA</td><td>1:100 - 1:400</td></tr><tr><td>ICC/IF</td><td>Assay-dependent</td></tr><tr><td>IHC-Fr</td><td>Assay-dependent</td></tr><tr><td>IHC-P</td><td>Assay-dependent</td></tr><tr><td>WB</td><td>Assay-dependent</td></tr></tbody></table>		Application	Dilution	ELISA	Assay-dependent	FACS	Assay-dependent	FLISA	1:100 - 1:400	ICC/IF	Assay-dependent	IHC-Fr	Assay-dependent	IHC-P	Assay-dependent	WB	Assay-dependent
Application	Dilution																	
ELISA	Assay-dependent																	
FACS	Assay-dependent																	
FLISA	1:100 - 1:400																	
ICC/IF	Assay-dependent																	
IHC-Fr	Assay-dependent																	
IHC-P	Assay-dependent																	
WB	Assay-dependent																	
Application Note	* The dilutions indicate recommended starting dilutions and the optimal dilutions or concentrations should be determined by the scientist.																	

Properties

Form	Liquid
Purification	Affinity purification with immunogen.
Buffer	PBS and 0.1% Sodium azide.
Preservative	0.1% Sodium azide
Concentration	1 mg/ml

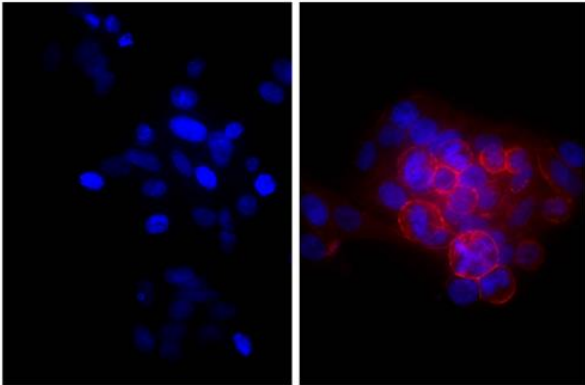
Storage instruction

Aliquot and store in the dark at 2-8°C. Keep protected from prolonged exposure to light. Avoid repeated freeze/thaw cycles. Suggest spin the vial prior to opening. The antibody solution should be gently mixed before use.

Note

For laboratory research only, not for drug, diagnostic or other use.

Images



ARG23777 Goat anti-Mouse IgA + IgG + IgM antibody (TRITC) (pre-adsorbed) ICC/IF image

Immunofluorescence: Human epithelial carcinoma cell line HEp-2 was stained with Mouse anti-Human CD44 (right) followed by ARG23777 Goat anti-Mouse IgA + IgG + IgM antibody (TRITC) (pre-adsorbed) and DAPI.