

ARG23792 Goat anti-Mouse IgG (H+L) antibody (APC), pre-adsorbed

Package: 125 µg
Store at: 4°C

Summary

Product Description	APC-conjugated Goat Polyclonal antibody recognizes Mouse IgG (H+L)
Tested Reactivity	Ms
Tested Application	ELISA, ELISPOT, FACS, FLISA, ICC/IF, IHC-Fr, WB
Specificity	Reacts with the heavy and light chains of mouse IgG1, IgG2a, IgG2b, and IgG3, and with the light chains of mouse IgM and IgA as demonstrated by ELISA, FLISA, and/or flow cytometry; minimal cross reactivity with human immunoglobulins
Host	Goat
Clonality	Polyclonal
Isotype	IgG
Target Name	IgG (H+L)
Species	Mouse
Conjugation	APC

Application Instructions

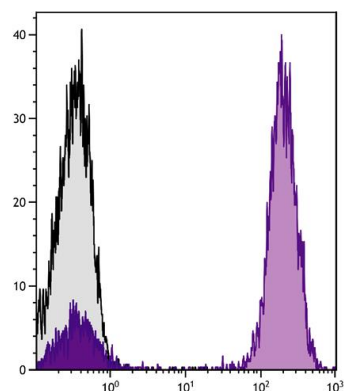
Pre Adsorbed	Human immunoglobulins and pooled sera.																
Application table	<table><thead><tr><th>Application</th><th>Dilution</th></tr></thead><tbody><tr><td>ELISA</td><td>Assay-dependent</td></tr><tr><td>ELISPOT</td><td>Assay-dependent</td></tr><tr><td>FACS</td><td>< 0.1 µg/10⁶ cells</td></tr><tr><td>FLISA</td><td>< 1 µg/ml</td></tr><tr><td>ICC/IF</td><td>Assay-dependent</td></tr><tr><td>IHC-Fr</td><td>Assay-dependent</td></tr><tr><td>WB</td><td>Assay-dependent</td></tr></tbody></table>	Application	Dilution	ELISA	Assay-dependent	ELISPOT	Assay-dependent	FACS	< 0.1 µg/10 ⁶ cells	FLISA	< 1 µg/ml	ICC/IF	Assay-dependent	IHC-Fr	Assay-dependent	WB	Assay-dependent
Application	Dilution																
ELISA	Assay-dependent																
ELISPOT	Assay-dependent																
FACS	< 0.1 µg/10 ⁶ cells																
FLISA	< 1 µg/ml																
ICC/IF	Assay-dependent																
IHC-Fr	Assay-dependent																
WB	Assay-dependent																
Application Note	* The dilutions indicate recommended starting dilutions and the optimal dilutions or concentrations should be determined by the scientist.																

Properties

Form	Liquid
Purification	Affinity purification with immunogen.
Buffer	PBS, 0.1% Sodium azide and Sucrose.
Preservative	0.1% Sodium azide

Stabilizer	Sucrose
Concentration	0.5 mg/ml
Storage instruction	Aliquot and store in the dark at 2-8°C. Keep protected from prolonged exposure to light. Avoid repeated freeze/thaw cycles. Suggest spin the vial prior to opening. The antibody solution should be gently mixed before use.
Note	For laboratory research only, not for drug, diagnostic or other use.

Images



ARG23792 Goat anti-Mouse IgG (H+L) antibody (APC), pre-adsorbed
FACS image

Flow Cytometry: Human peripheral blood lymphocytes were stained with Mouse anti-Human CD3 followed by ARG23792 Goat anti-Mouse IgG (H+L) antibody (APC), pre-adsorbed.