

ARG23799 Goat anti-Mouse IgG (H+L) antibody (Biotin), pre-adsorbed

Package: 250 µg
Store at: 4°C

Summary

| | |
|---------------------|--|
| Product Description | Biotin-conjugated Goat Polyclonal antibody recognizes Mouse IgG (H+L) |
| Tested Reactivity | Ms |
| Tested Application | ELISA, FACS, FLISA, ICC/IF, WB |
| Specificity | Reacts with the heavy and light chains of mouse IgG1, IgG2a, IgG2b and IgG3, and with the light chains of mouse IgM and IgA as demonstrated by ELISA, FLISA, and/or flow cytometry. Minimal cross reactivity with rat immunoglobulins. |
| Host | Goat |
| Clonality | Polyclonal |
| Isotype | IgG |
| Target Name | IgG (H+L) |
| Species | Mouse |
| Conjugation | Biotin |

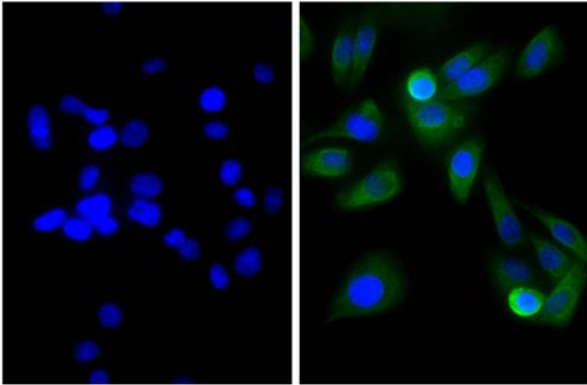
Application Instructions

| Pre Adsorbed | Rat immunoglobulins and pooled sera. | |
|-------------------|--|------------------------------|
| Application table | Application | Dilution |
| | ELISA | 1:5000 - 1:20000 |
| | FACS | < 1 µg/10 ⁶ cells |
| | FLISA | Assay-dependent |
| | ICC/IF | Assay-dependent |
| | WB | Assay-dependent |
| Application Note | * The dilutions indicate recommended starting dilutions and the optimal dilutions or concentrations should be determined by the scientist. | |

Properties

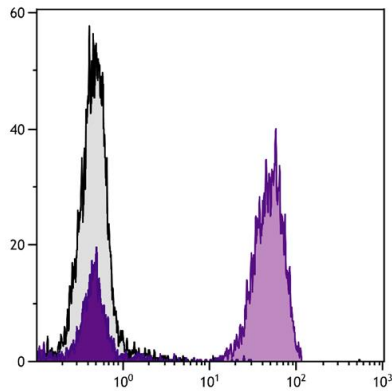
| | |
|---------------------|--|
| Form | Liquid |
| Purification | Affinity purification with immunogen. |
| Buffer | PBS and 0.1% Sodium azide. |
| Preservative | 0.1% Sodium azide |
| Concentration | 0.5 mg/ml |
| Storage instruction | Aliquot and store in the dark at 2-8°C. Keep protected from prolonged exposure to light. Avoid repeated freeze/thaw cycles. Suggest spin the vial prior to opening. The antibody solution should be gently mixed before use. |

Images



ARG23799 Goat anti-Mouse IgG (H+L) antibody (Biotin) (pre-adsorbed) ICC/IF image

Immunofluorescence: Human pancreatic carcinoma cell line MIA PaCa-2 stained with anti-Cytokeratin 18 antibody (right), followed by Goat anti-Mouse IgG (H+L) antibody, ARG23799 Goat anti-Mouse IgG (H+L) antibody (Biotin) (pre-adsorbed), Streptavidin (FITC) and DAPI.



ARG23799 Goat anti-Mouse IgG (H+L) antibody (Biotin) (pre-adsorbed) FACS image

Flow Cytometry: Human peripheral blood lymphocytes stained with Mouse anti-Human CD3 antibody followed by Goat anti-Mouse IgG (H+L) antibody, ARG23799 Goat anti-Mouse IgG (H+L) antibody (Biotin) (pre-adsorbed) and Streptavidin (FITC).