

ARG23805 Goat anti-Mouse IgG2a antibody (Texas Red), pre-adsorbed

Package: 500 µg
Store at: 4°C

Summary

Product Description	Texas Red-conjugated Goat Polyclonal antibody recognizes Mouse IgG2a
Tested Reactivity	Ms
Tested Application	ELISA, ELISPOT, FACS, FLISA, ICC/IF, IHC-Fr, IHC-P, Puri, WB
Specificity	Reacts with the heavy chain of mouse IgG2a as demonstrated by ELISA, FLISA, and/or flow cytometry. Minimal cross reactivity with human immunoglobulins. May react with immunoglobulins from other species.
Host	Goat
Clonality	Polyclonal
Isotype	IgG
Target Name	IgG2a
Species	Mouse
Conjugation	Texas Red

Application Instructions

Pre Adsorbed Mouse IgG1, IgG2b, IgG3, IgM, and IgA; Human immunoglobulins and pooled sera.

Application table

Application	Dilution
ELISA	Assay-dependent
ELISPOT	Assay-dependent
FACS	Assay-dependent
FLISA	1:100 - 1:400
ICC/IF	Assay-dependent
IHC-Fr	Assay-dependent
IHC-P	Assay-dependent
Puri	Assay-dependent
WB	Assay-dependent

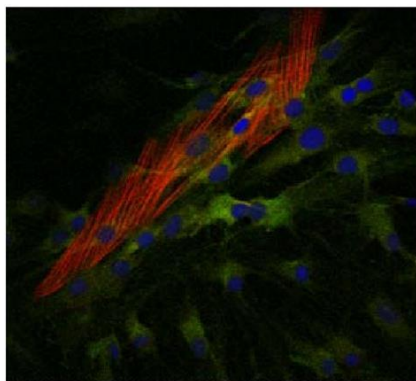
Application Note * The dilutions indicate recommended starting dilutions and the optimal dilutions or concentrations should be determined by the scientist.

Properties

Form	Liquid
Purification	Affinity purification with immunogen.

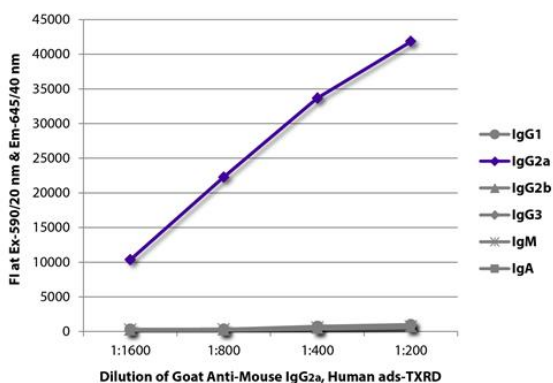
Buffer	PBS and 0.1% Sodium azide.
Preservative	0.1% Sodium azide
Concentration	1 mg/ml
Storage instruction	Aliquot and store in the dark at 2-8°C. Keep protected from prolonged exposure to light. Avoid repeated freeze/thaw cycles. Suggest spin the vial prior to opening. The antibody solution should be gently mixed before use.
Note	For laboratory research only, not for drug, diagnostic or other use.

Images



ARG23805 Goat anti-Mouse IgG2a antibody (Texas Red), pre-adsorbed ICC/IF image

Immunofluorescence: Human myofibroblasts were stained with anti-COX2 and anti-alpha-SMA followed by ARG23805 Goat anti-Mouse IgG2a antibody (Texas Red), pre-adsorbed, ARG21884 Goat anti-Mouse IgG1 antibody (FITC), pre-adsorbed, and DAPI.



ARG23805 Goat anti-Mouse IgG2a antibody (Texas Red), pre-adsorbed FLISA image

FLISA: FLISA plate was coated with purified Mouse IgG1, IgG2a, IgG2b, IgG3, IgM, and IgA. Immunoglobulins were detected with serially diluted ARG23805 Goat anti-Mouse IgG2a antibody (Texas Red), pre-adsorbed.