

## ARG23808 Goat anti-Mouse IgG2a antibody (PE/Texas Red), pre-adsorbed

Package: 125 µg  
Store at: 4°C

### Summary

Product Description	PE/Texas Red-conjugated Goat Polyclonal antibody recognizes Mouse IgG2a
Tested Reactivity	Ms
Tested Application	ELISA, ELISPOT, FACS, FLISA, ICC/IF, IHC-Fr, IHC-P, Puri, WB
Specificity	Reacts with the heavy chain of mouse IgG2a as demonstrated by ELISA, FLISA, and/or flow cytometry. Minimal cross reactivity with human immunoglobulins. May react with immunoglobulins from other species.
Host	Goat
Clonality	Polyclonal
Isotype	IgG
Target Name	IgG2a
Species	Mouse
Conjugation	PE/Texas Red

### Application Instructions

Pre Adsorbed Mouse IgG1, IgG2b, IgG3, IgM, and IgA; Human immunoglobulins and pooled sera.

#### Application table

Application	Dilution
ELISA	Assay-dependent
ELISPOT	Assay-dependent
FACS	< 0.1 µg/10 <sup>6</sup> cells
FLISA	Assay-dependent
ICC/IF	Assay-dependent
IHC-Fr	Assay-dependent
IHC-P	Assay-dependent
Puri	Assay-dependent
WB	Assay-dependent

Application Note \* The dilutions indicate recommended starting dilutions and the optimal dilutions or concentrations should be determined by the scientist.

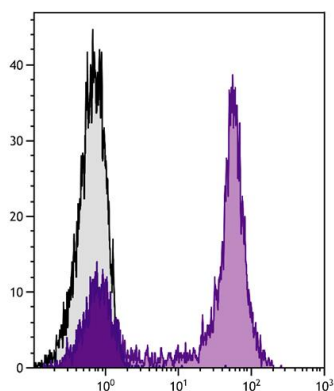
### Properties

Form	Liquid
Purification	Affinity purification with immunogen.

Buffer	PBS, 0.1% Sodium azide and Sucrose.
Preservative	0.1% Sodium azide
Stabilizer	Sucrose
Concentration	0.25 mg/ml
Storage instruction	Aliquot and store in the dark at 2-8°C. Keep protected from prolonged exposure to light. Avoid repeated freeze/thaw cycles. Suggest spin the vial prior to opening. The antibody solution should be gently mixed before use.
Note	For laboratory research only, not for drug, diagnostic or other use.

## Images

---



ARG23808 Goat anti-Mouse IgG2a antibody (PE/Texas Red), pre-adsorbed FACS image

Flow Cytometry: Human blood peripheral lymphocytes were stained with Mouse anti-Human CD5 followed by ARG23808 Goat anti-Mouse IgG2a antibody (PE/Texas Red), pre-adsorbed.