

## ARG23840 Goat anti-Rabbit IgG (H+L) antibody (FITC), pre-adsorbed

Package: 500 µg  
Store at: 4°C

### Summary

Product Description	FITC-conjugated Goat Polyclonal antibody recognizes Rabbit IgG (H+L)
Tested Reactivity	Rb
Tested Application	ELISA, FACS, FLISA, ICC/IF, IHC-Fr, IHC-P, IHC-Wmt, WB
Specificity	Reacts with the heavy and light chains of rabbit IgG and the light chains of rabbit IgM
Host	Goat
Clonality	Polyclonal
Isotype	IgG
Target Name	IgG (H+L)
Species	Rabbit
Conjugation	FITC

### Application Instructions

Pre Adsorbed Mouse and Human immunoglobulins and pooled sera.

#### Application table

Application	Dilution
ELISA	Assay-dependent
FACS	< 1 µg/10 <sup>6</sup> cells
FLISA	1:100 - 1:400
ICC/IF	Assay-dependent
IHC-Fr	Assay-dependent
IHC-P	Assay-dependent
IHC-Wmt	Assay-dependent
WB	Assay-dependent

Application Note \* The dilutions indicate recommended starting dilutions and the optimal dilutions or concentrations should be determined by the scientist.

### Properties

Form	Liquid
Purification	Affinity purification with immunogen.
Buffer	PBS and 0.1% Sodium azide.
Preservative	0.1% Sodium azide
Concentration	1 mg/ml

**Storage instruction**

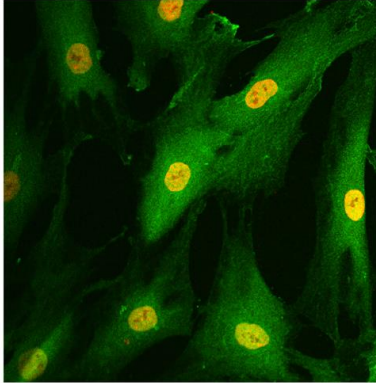
Aliquot and store in the dark at 2-8°C. Keep protected from prolonged exposure to light. Avoid repeated freeze/thaw cycles. Suggest spin the vial prior to opening. The antibody solution should be gently mixed before use.

**Note**

For laboratory research only, not for drug, diagnostic or other use.

**Images**

---



ARG23840 Goat anti-Rabbit IgG (H+L) antibody (FITC), pre-adsorbed  
ICC/IF image

Immunofluorescence: Human fibroblast-like synoviocytes were stained with ARG23840 Goat anti-Rabbit IgG (H+L) antibody (FITC), pre-adsorbed. The DNA was stained with DAPI.