

ARG23862 Donkey anti-Rat IgG (H+L) antibody (Biotin), pre-adsorbed

Package: 500 µg
Store at: 4°C

Summary

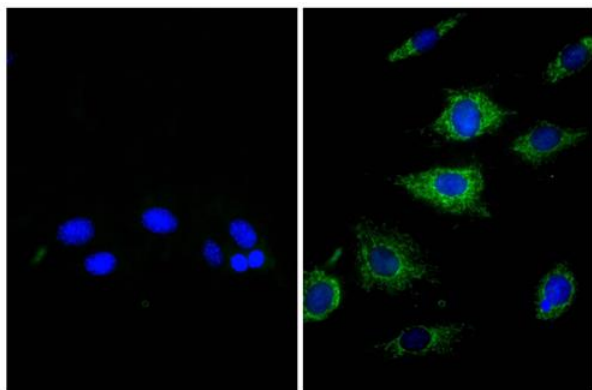
Product Description	Biotin-conjugated Donkey Polyclonal antibody recognizes Rat IgG (H+L)
Tested Reactivity	Rat
Tested Application	ELISA, FLISA, IHC-P, WB
Specificity	Reacts with the heavy and light chains of rat IgG and the light chains of rat IgM
Host	Donkey
Clonality	Polyclonal
Isotype	IgG
Target Name	IgG (H+L)
Species	Rat
Conjugation	Biotin

Application Instructions

Pre Adsorbed	Mouse serum proteins.										
Application table	<table><thead><tr><th>Application</th><th>Dilution</th></tr></thead><tbody><tr><td>ELISA</td><td>1:5000 - 1:20000</td></tr><tr><td>FLISA</td><td>Assay-dependent</td></tr><tr><td>IHC-P</td><td>Assay-dependent</td></tr><tr><td>WB</td><td>Assay-dependent</td></tr></tbody></table>	Application	Dilution	ELISA	1:5000 - 1:20000	FLISA	Assay-dependent	IHC-P	Assay-dependent	WB	Assay-dependent
Application	Dilution										
ELISA	1:5000 - 1:20000										
FLISA	Assay-dependent										
IHC-P	Assay-dependent										
WB	Assay-dependent										
Application Note	* The dilutions indicate recommended starting dilutions and the optimal dilutions or concentrations should be determined by the scientist.										

Properties

Form	Liquid
Purification	Affinity purification with immunogen.
Buffer	PBS and 0.1% Sodium azide.
Preservative	0.1% Sodium azide
Concentration	0.5 mg/ml
Storage instruction	Aliquot and store in the dark at 2-8°C. Keep protected from prolonged exposure to light. Avoid repeated freeze/thaw cycles. Suggest spin the vial prior to opening. The antibody solution should be gently mixed before use.
Note	For laboratory research only, not for drug, diagnostic or other use.



ARG23862 Donkey anti-Rat IgG (H+L) antibody (Biotin), pre-adsorbed ICC/IF image

Immunofluorescence: NIH/3T3 was stained with Rat anti-beta Actin (right) followed by ARG23862 Donkey anti-Rat IgG (H+L) antibody (Biotin), pre-adsorbed, Streptavidin-FITC, and DAPI.