

## ARG30009 NSC and Neuron Marker Antibody Duo (Nestin, MAP2)

Package: 1 pair  
Store at: -20°C

### Component

Cat. No.	Component Name	Host clonality	Reactivity	Application	Package
ARG52328	anti-MAP2 antibody	Chicken pAb	Bov, Dog, Hu, Marmoset, Ms, Rat, Sheep	ICC/IF, IHC-P, IHC-Fr, IHC-FoFr, WB	50 µl
ARG52345	anti-Nestin antibody [4D11]	Mouse mAb	Hu, Ms, Rat	ICC/IF, IHC-P, WB	50 µl

### Summary

<b>Product Description</b>	<p>Nestin is an intermediate filament protein expressed in dividing cells during the early development stages of nervous system and is utilized as a neural stem cell marker. The neural stem cells loss Nestin expression once the cell fate is determined. Following neuro- and gliogenesis, Nestin is replaced by cell type-specific intermediate filaments, e.g., Neurofilaments for neurons and GFAP for astrocytes.</p> <p>MAP2 is a neuron-specific cytoskeletal protein that enriches and stabilizes in dendrites and is used as a mature neuron marker.</p> <p>arigo's ARG30009 NSC and Neuron Marker Antibody Duo (Nestin, MAP2) is excellent for distinguishing neural stem cells and mature neurons.</p> <p>Related news: <a href="#">14-3-3η as a promising target for the treatment of Major Depression Disorder</a> <a href="#">Neuronal Development Marker</a> <a href="#">Astrocyte-to-neuron conversion for Parkinson's disease treatment</a></p>
<b>Target Name</b>	NSC and Neuron Marker
<b>Alternate Names</b>	NSC and Neuron Marker antibody; MAP2 antibody; Nestin antibody

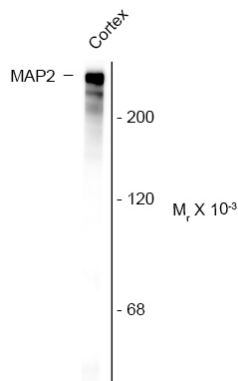
### Properties

<b>Storage instruction</b>	For continuous use, store undiluted antibody at 2-8°C for up to a week. For long-term storage, aliquot and store at -20°C or below. Storage in frost free freezers is not recommended. Avoid repeated freeze/thaw cycles. Suggest spin the vial prior to opening. The antibody solution should be gently mixed before use.
<b>Note</b>	For laboratory research only, not for drug, diagnostic or other use.

### Bioinformation

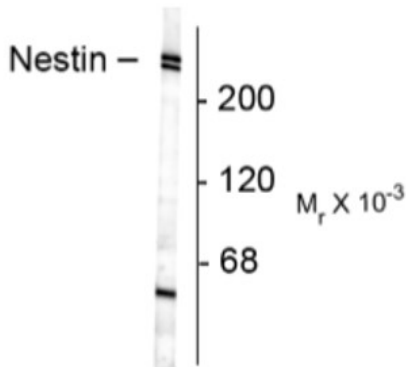
<b>Gene Full Name</b>	Antibody Duo for NSC and Neuron Marker (Nestin, MAP2)
<b>Highlight</b>	Related Product: <a href="#">anti-MAP2 antibody;</a> <a href="#">anti-Nestin antibody;</a>

Images



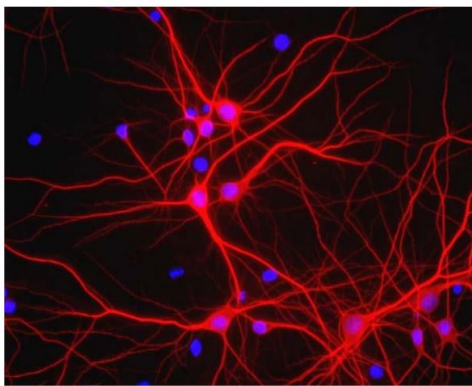
ARG52328 anti-MAP2 antibody WB image

Western Blot: rat cortex lysate stained with ARG52328 anti-MAP2 antibody showing specific immunolabeling of the ~280k MAP2 protein.



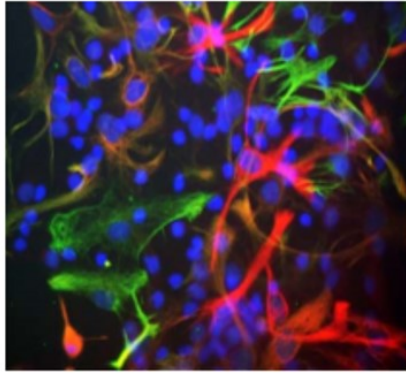
ARG52345 anti-Nestin antibody [4D11] WB image

Western Blot: neonatal rat brain lysate stained with Nestin antibody (ARG52345) showing specific immunolabeling of the ~220-240 kDa nestin doublet.



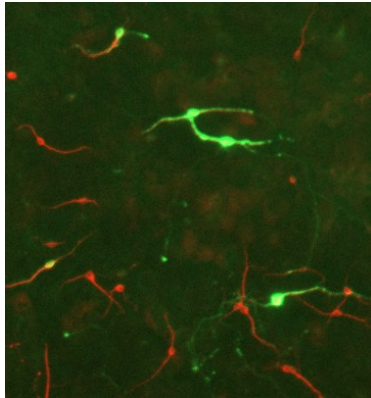
ARG52328 anti-MAP2 antibody ICC/IF image

Immunofluorescence: Mixed neuron/glial cultures. The perikarya and dendrites of neurons are strongly and specifically stained with ARG52328 anti-MAP2 antibody (red). Cell nuclei are visualized with DAPI DNA stain.



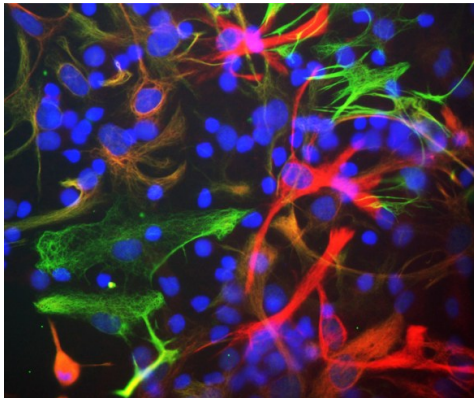
#### ARG52345 anti-Nestin antibody [4D11] ICC/IF image

Immunofluorescence: cultured neonatal rat neurons and glia showing nestin labeling in red (ARG52345 Nestin antibody [4D11]) and vimentin (ARG52468 anti-Vimentin antibody) in green. Astrocytes and neuronal stem cells stain strongly and specifically in a clearly filamentous fashion with the anti-Nestin antibody. The presence of Nestin indicates that the cells are developing astrocytes, neuroblasts or undifferentiated neural stem cells.



#### ARG52328 anti-MAP2 antibody ICC/IF image

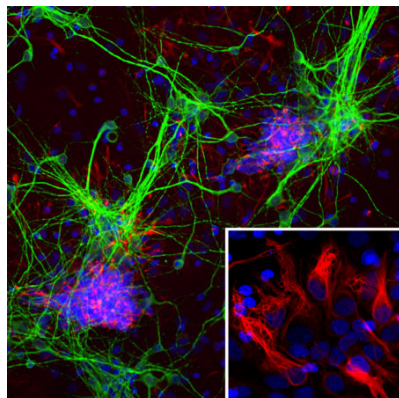
Immunofluorescence: E17 Rat midbrain mixed neuronal cultures stained with [ARG52461](#) anti-Tyrosine Hydroxylase antibody (green) and ARG52328 anti-MAP2 antibody (red).



#### ARG52345 anti-Nestin antibody [4D11] ICC/IF image

Immunofluorescence: Cultured neonatal Rat neurons and glia showing nestin labeling in red (ARG52345 Nestin antibody [4D11]) and vimentin (ARG52468 anti-Vimentin antibody) in green.

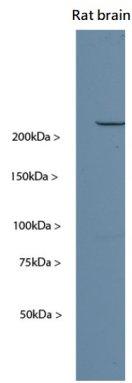
Astrocytes and neuronal stem cells stain strongly and specifically in a clearly filamentous fashion with the anti-Nestin antibody. The presence of Nestin indicates that the cells are developing astrocytes, neuroblasts or undifferentiated neural stem cells.



#### ARG52345 anti-Nestin antibody [4D11] ICC/IF image

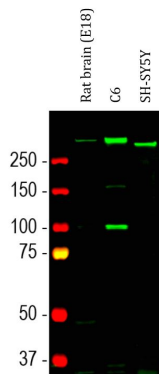
Immunofluorescence: Cortical neuron-glia cells from E20 Rat stained with ARG52345 anti-Nestin antibody [4D11] (red) at 1:500 dilution and costained with [ARG52328](#) anti-MAP2 antibody (green) at 1:5000 dilution. Hoechst (blue) for nuclear staining.

The Nestin antibody labels developing astrocytes and neuronal stem cells in a clearly filamentous fashion, while the MAP2 antibody stains dendrites and perikarya of mature neurons.



#### ARG52345 anti-Nestin antibody [4D11] WB image

Western blot: Rat brain (P18) homogenate stained with ARG52345 anti-Nestin antibody [4D11].



#### ARG52345 anti-Nestin antibody [4D11] WB image

Western blot: Rat brain (embryonic, E18), C6 and SH-SY5Y cell lysates stained with ARG52345 anti-Nestin antibody [4D11] (green) at 1:500 dilution.