

## ARG30014 Phospho PKM2 Antibody Duo (Total, pS37)

Package: 1 pair  
Store at: -20°C

### Component

Cat. No.	Component Name	Host clonality	Reactivity	Application	Package
ARG61996	anti-PKM1 / 2 antibody	Rabbit pAb	Hu, Ms, Rat	ICC/IF, IHC-P, WB	50 µl
ARG51804	anti-PKM2 phospho (Ser37) antibody	Rabbit pAb	Hu	ICC/IF, WB	50 µl

### Summary

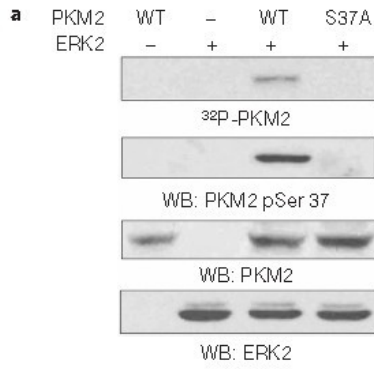
Product Description	In 2012, Yang et al. reported that PKM2, but not PKM1, can be phosphorylated at Ser37 by ERK2 through the activation of EGF Receptor. The phosphorylated PKM2 translocates to nucleus and act as a coactivator of beta catenin to induce c-myc expression and results in PKM2-dependant GLUT1, LDHA and PTB upregulation. In conclusion, the level of PKM2 Ser37 phosphorylation might play an important role in Warburg effect and tumorigenesis. <a href="#">[PMID:23178880]</a> ARG30014 PKM2 phospho Duos provides antibodies react non-phosphorylated or phosphorylated PKM2 at Ser37, can be used as an antibody pair in PKM2 study
Target Name	PKM2
Alternate Names	Phospho PKM2 antibody; PKM2 phospho (Ser37) antibody; PKM1/2 antibody

### Properties

Storage instruction	For continuous use, store undiluted antibody at 2-8°C for up to a week. For long-term storage, aliquot and store at -20°C or below. Storage in frost free freezers is not recommended. Avoid repeated freeze/thaw cycles. Suggest spin the vial prior to opening. The antibody solution should be gently mixed before use.
Note	For laboratory research only, not for drug, diagnostic or other use.

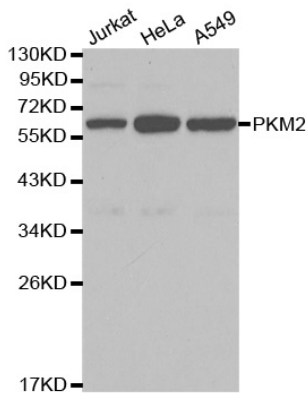
### Bioinformation

Gene Full Name	Antibody Duo for Phospho PKM2 (Total, pS37)
Highlight	Related Product: <a href="#">anti-PKM1 / 2 antibody;</a> <a href="#">anti-PKM2 phospho (Ser37) antibody;</a>
Research Area	Cancer antibody; Gene Regulation antibody; Metabolism antibody; Signaling Transduction antibody



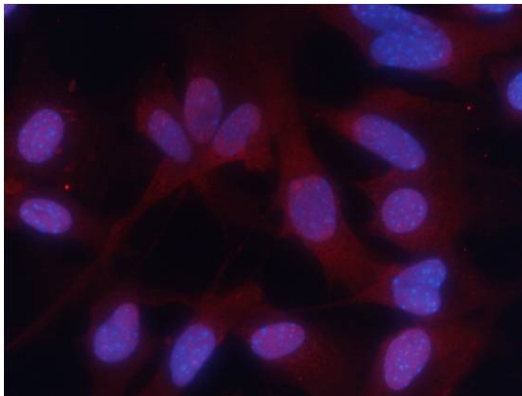
**ARG51804 anti-PKM2 phospho (Ser37) antibody WB image**

Western Blot: in vitro kinase assays carried out with purified active ERK2, wild-type (WT) PKM2 and PKM2 S37A mutant stained with anti-PKM2 (phospho Ser37) antibody ARG51804.



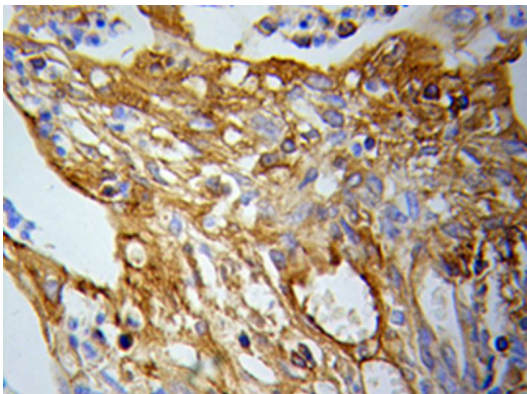
**ARG61996 anti-PKM2 antibody WB image**

Western Blot: extracts of various cell lines stained with anti-PKM2 antibody ARG61996.



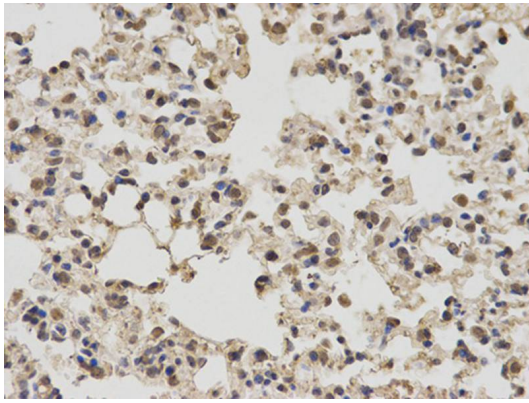
**ARG51804 anti-PKM2 phospho (Ser37) antibody ICC/IF image**

Immunofluorescence: methanol-fixed MEF cells stained with anti-PKM2 (phospho Ser37) antibody ARG51804.



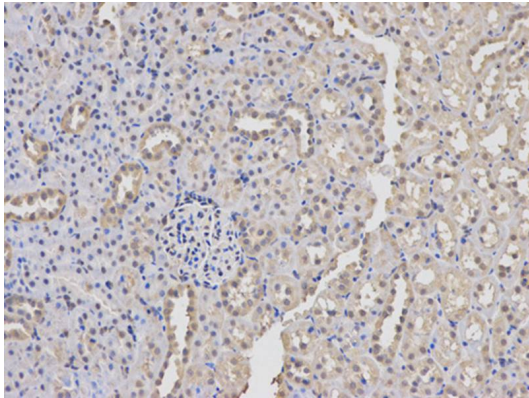
**ARG61996 anti-PKM2 antibody IHC-P image**

Immunohistochemistry: paraffin-embedded Lung cancer stained with anti-PKM2 antibody ARG61996.



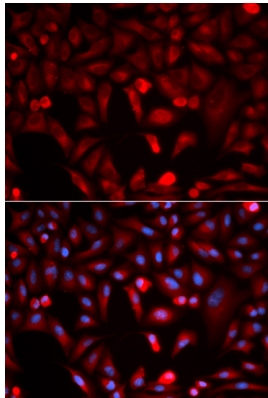
ARG61996 anti-PKM2 antibody IHC-P image

Immunohistochemistry: paraffin-embedded mouse lung stained with anti-PKM2 antibody ARG61996 at dilution of 1:100 (400x lens).



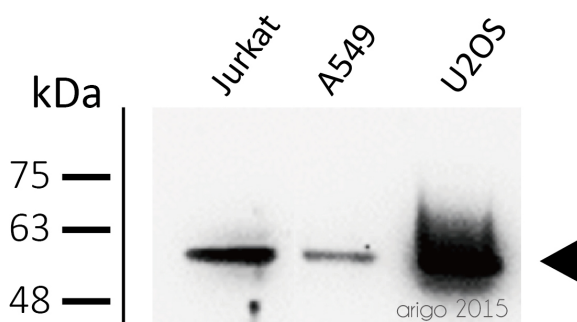
ARG61996 anti-PKM2 antibody IHC-P image

Immunohistochemistry: paraffin-embedded rat kidney stained with anti-PKM2 antibody ARG61996 at dilution of 1:100 (200x lens).



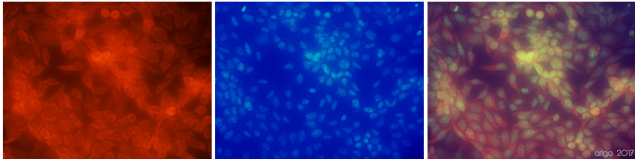
ARG61996 anti-PKM2 antibody ICC/IF image

Immunofluorescence: HeLa cell stained with anti-PKM2 antibody ARG61996. Blue: DAPI for nuclear staining.



ARG61996 anti-PKM1/2 antibody WB image

Western blot: 30  $\mu$ g of Jurkat, A549, and U2OS cell lysates stained with ARG61996 anti-PKM1/2 antibody at 1:500 dilution.



#### ARG61996 anti-PKM1/2 antibody ICC/IF image

Immunofluorescence: 100% Methanol fixed (RT, 10 min) HeLa cells stained with ARG61996 anti-PKM1/2 antibody at 1:20 dilution. Left: primary antibody (red). Middle: DAPI (blue). Right: Merge.

Secondary antibody: [ARG21917](#) Goat anti-Rabbit IgG antibody (TRITC)

---