

ARG30032 Phospho p53 Antibody Duo (pS33, pS46)

Package: 1 pair
Store at: -20°C

Component

Cat. No.	Component Name	Host clonality	Reactivity	Application	Package
ARG51599	anti-p53 phospho (Ser33) antibody	Rabbit pAb	Hu	ICC/IF, WB	50 µl
ARG51601	anti-p53 phospho (Ser46) antibody	Rabbit pAb	Hu	ICC/IF, WB	50 µl

Summary

Product Description P53, also known as tumor antigen p53, acts as a tumor suppressor in many tumor types to induce growth arrest or apoptosis depending on the physiological circumstances and cell type. Involved in cell cycle regulation as a trans-activator that acts to negatively regulate cell division by controlling a set of genes required for this process. One of the activated genes is an inhibitor of cyclin-dependent kinases.

Phosphorylation of p53 at Ser46 is associated with induction of p53AIP1 expression, resulting in commitment to apoptotic cell death. In response to genotoxic and oxidative stresses, p53 phosphorylated Ser-15, Ser-33 and Ser-46 and it leads to accumulation of p53/TP53, particularly in the nucleus, thus inducing the transactivation of p53/TP53 target genes.

To study how p53 correct oxidative stresses and apoptosis, antibodies to phosphorylated p53 at Ser33 and Ser46 might be two of the targets of your interest.

Related news:

[Therapeutic strategies against PDAC](#)

Target Name p53

Alternate Names Phospho p53 antibody; Phospho tumor protein p53 antibody; p53 phospho (Ser33) antibody; p53 phospho (Ser46) antibody

Properties

Storage instruction For continuous use, store undiluted antibody at 2-8°C for up to a week. For long-term storage, aliquot and store at -20°C or below. Storage in frost free freezers is not recommended. Avoid repeated freeze/thaw cycles. Suggest spin the vial prior to opening. The antibody solution should be gently mixed before use.

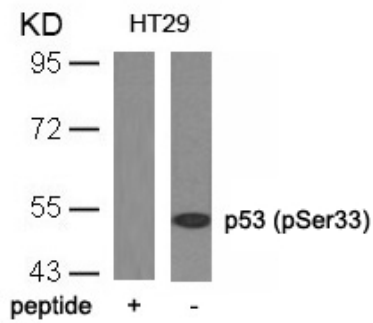
Note For laboratory research only, not for drug, diagnostic or other use.

Bioinformation

Gene Full Name Phospho tumor protein p53 Antibody Duo (pS33, pS46)

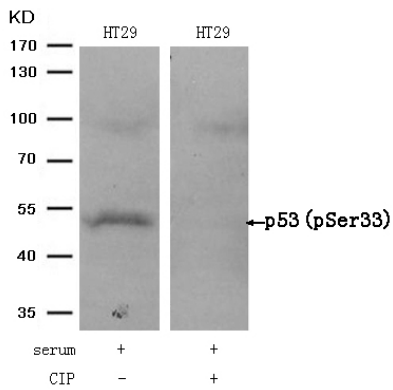
Highlight Related Product:
[anti-p53 phospho \(Ser33\) antibody;](#)
[anti-p53 phospho \(Ser46\) antibody;](#)

Images



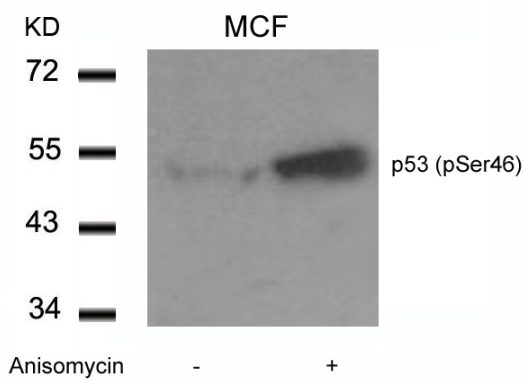
ARG51599 anti-p53 phospho (Ser33) antibody WB image

Western Blot: extracts from HT29 cells stained with anti-p53 (phospho Ser33) antibody ARG51599 and the same antibody preincubated with blocking peptide.



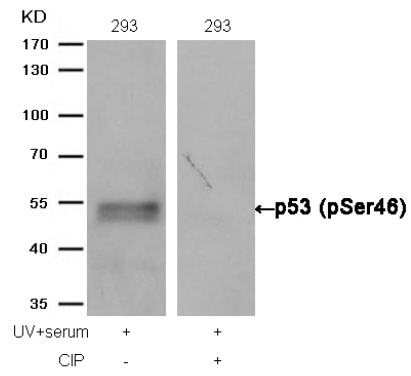
ARG51599 anti-p53 phospho (Ser33) antibody WB image

Western Blot: extracts from HT29 cells, treated with serum or calf intestinal phosphatase (CIP), stained with anti-p53 (phospho Ser33) antibody ARG51599.



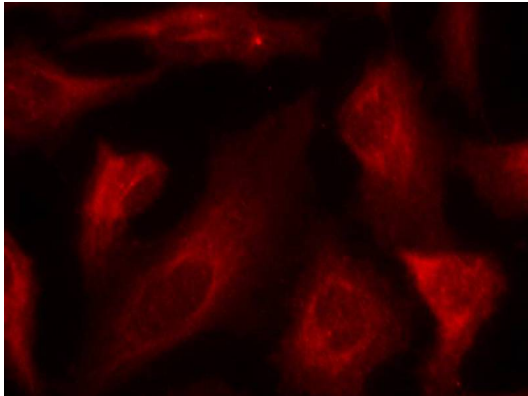
ARG51601 anti-p53 phospho (Ser46) antibody WB image

Western Blot: extracts from MCF cells untreated or treated with Anisomycin stained with anti-p53 (phospho Ser46) antibody ARG51601.



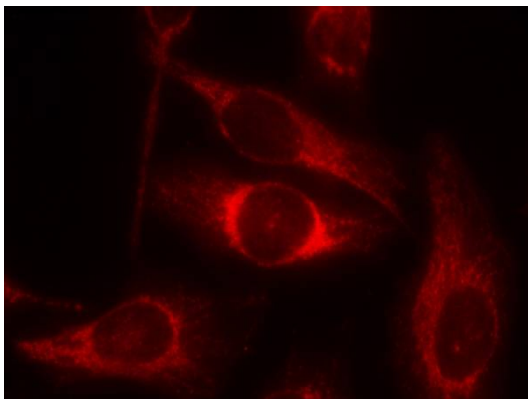
ARG51601 anti-p53 phospho (Ser46) antibody WB image

Western Blot: extracts from 293 cells, treated with UV+serum or calf intestinal phosphatase (CIP), stained with anti-p53 (phospho Ser46) antibody ARG51601.



ARG51599 anti-p53 phospho (Ser33) antibody ICC/IF image

Immunofluorescence: methanol-fixed HeLa cells stained with anti-p53 (phospho Ser33) antibody ARG51599.



ARG51601 anti-p53 phospho (Ser46) antibody ICC/IF image

Immunofluorescence: methanol-fixed HeLa cells stained with anti-p53 (phospho Ser46) antibody ARG51601.